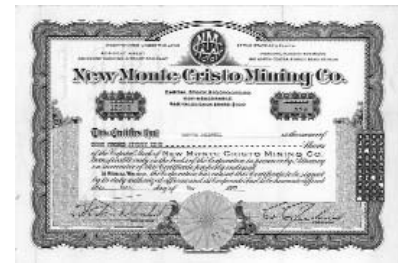


**674.** Maricopa. Wickenburg. **Bisbee Belle Copper Co.** Incorporated in Territory of Arizona 1901. Issued to Peter W. French for 1000 shares, cert #1918, in 1904. Signed by Geo M. Case president and D. J. Jake secretary. Very unique vignette of a cowgirl holding up a buffalo nickel printed in blue. Black border with bronze seal and safety print. Corporate seal is embossed with same image as vignette. Uncancelled. Printer - 8 x 11. Dated *Los Angeles, California*. Owned 25 claims in the Wickenburg district. There were four shafts and a 600 foot tunnel. Ore assayed at 30% copper and \$2 gold per ton. The company also owned a few claims in the Warren district of Cochise County outside Bisbee. (Copper Handbook, 1905, p.233). Extremely fine. Est. \$150-300



**675.** Maricopa. Wickenburg. **Hite Gold Mines Co.** Cert. #9. Incorporated in Arizona in 1906. Issued to Joseph R. Findall for 100 shares in 1906. Signed by president P. Y. Hite and secretary H. W. Black. Uncancelled. Vignette of bald eagle atop dome, at left. Black border and gilt seal. Goes-printer. 8 'x 10 1/2"'. Dated Wickenburg, Arizona. The dateline of Wickenburg implies that the company had its operations in Maricopa county. P. Y. Hite is probably a son or relative of Joseph Hite, founder of the Hite's Cove district in California, 1862, that was active through the 1880's, however, it is not the same company as the Hite Gold Mining Co. of California's Mariposa Co. The Hite family is still in the mining business today. Not listed in the Copper Handbooks. Xf. Est. \$25-75

**676.** Maricopa. Wickenburg. **New Monte Cristo MC.** Cert. #12918. Incorporated in Nevada in 1927. Issued to Martha Caldwell for 378 shares in 1927. Signed by president C.C. Julian and secretary H.B. Flesher. Uncancelled. The New Monte Cristo is a consolidation of several properties controlled by Julian, who was known for his get rich quick schemes. The mine was originally owned by Ezra W. Thayer. Within only a few months under Julian's control, the company was fertile with investors, having sold over \$150,000,000 worth of stock. In and out of litigation, eventually the mine was auctioned off at a sheriff's sale, bought by angry and vengeful stockholder, A. Krell (Ref: Rand, 1931, p.627-8). No vignette. Blue border. Printed by Jeffries Lithograph Co. Vf, small tears at folds. 8 1/4" x 12". Est. \$25-75



**MOHAVE**



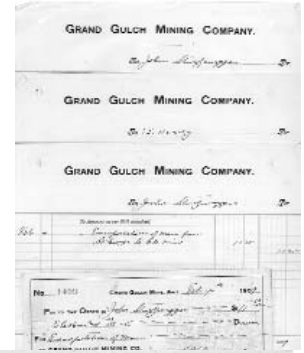
**677.** Mohave. Artillery. **Blossoms Mining Co.** Incorporated in Arizona 1903. Issued to John Blank for 25 shares, cert #17, in 1903. Signed by H. C. Alwan president and Thomas A. Carson treasurer. Vignette at upper left of miners working underground with smaller vignettes at each corner. Black border with brown seal and safety print. Red underprint of the word "Preferred". Uncancelled. Printer - Goes. 8 x 11. Not listed in the Copper Handbooks. There is a Blossom group of claims located in the Artillery district, located at the extreme southeast corner of Mohave County. (Welty et al, Mine Index..., 1985, p.45). Tear along left fold crease at top edge. Wear to fold creases in general. Very fine. Est. \$25-50

**678.** Mohave. Bentley. **Grand Gulch Mining Co.** Incorporated in Utah 1874. Issued to Irene M Jennings for 5000 shares, cert #131, in 1908. Signed by Wm. H. McIntyre president and W. P. Jennings secretary. Vignette of two miners working underground. Black border and print. Uncancelled. Printer - Utah Litho Co, Salt Lake. Dated *Salt Lake City, Utah*. "Mines located in Mohave County, Arizona" printed on certificate. The company had 9 claims located in the Bentley district of Mohave County. The property is only accessible from southern Nevada due to the barrier imposed by the Grand Canyon. The copper ore is hosted by sandstone and limestone showing cuprite, melaconite, malachite, azurite and chalcocite. The bulk of mineralization is along bedding planes. The ore is said to have run 35% copper with 4 ounce silver per ton. There was a 500' shaft. The mine was located 45 miles from St. Thomas and employed 70 men. Ore was being shipped that was returning values of 10-39% copper in 1916. (Mines Handbook, 1918, p.369). The Grand Gulch MC emplaced the second telegraph line in Arizona around 1871. The line ran from the mine to Pipe Spring and onto Kanab. Staple holes at upper left. Extremely fine. Est. \$50-100



**679.** Mohave. Bentley. **Grand Gulch Mining Co.** Incorporated in Utah 1874. Stock certificate issued to Irene M. Jennings for 1636 shares, cert #269, in 1918. Signed Wm. H. McIntyre president and W. P. Jennings. Vignette of three miners working underground. Green border and seal. Uncancelled. Printer not noted. 9 x 11. Dated *Salt Lake City, Utah*. "Mines located in Mohave County, Arizona" printed on certificate. See lot above for the story. Small tears at bottom edge. Staple holes at upper left. Very fine. Est. \$25-50

**680. Mohave. Bentley. Grand Gulch Mining Co.** Lot of four pieces. All are receipts from the Grand Gulch Mining Company 1909. Signed by S. R. Callaway, superintendent. Size 7 X 8 1/2". Fine. See lot above for the story. Est. \$25-50



**681. Mohave. Bentley. Grand Gulch Mining Co Document Collection 1900-1920.** Lot of 100+ pieces. This company was incorporated in Utah 1874. The bulk of the documents are receipts for payments with the attendant cancelled checks. There are several shipment receipts for ore sacks. The Grand Gulch Mining Company operated the GG Mine on the Shivwits Plateau in northwest Arizona. All very fine. See lot below for the story. Est. \$100-300

**682. Mohave. Cedar. Arizona-Southwestern Copper Co.** Lot of 2 different certificates. Incorporated in Arizona. One is issued to J. Walter Zellely for 300 shares, cert #1799, in 1916. Vignette of a mill, perhaps the actual operation of this company. Green border with one inch inset of green safety print. Uncancelled. Printer not noted. 9 x 11. The other is issued to James H. Gay for 500 shares, cert #B103, in 1916. No vignette. Orange border and safety print. Uncancelled. Printer - ABN. 8 x 11. Both certificates are signed by R. H. Weber president and J. H. Hoffman secretary. *Mines, Cedar Valley District, Mohave County, Arizona* printed at top of certificate. The company had 14 claims that included the Pittsburgh mine located in Crow Canyon, Cedar Valley district in the Hualapai Mountains 25 miles from Yucca. There were two shafts of about 500' each and more 5000' of workings. Reported assays were of 0.25% copper, 3% lead, 4% zinc, 10 ounces silver and \$1 gold per ton. The Mines Handbook reports the following "Property has ore, bit it is complex, and mining, milling and freight charges high, so that the problem of dividends is one requiring great skill, courage and time, as well as ample funds." (Mines Handbook, 1925, p.425). Both very fine. Est. \$50-100



Partial.



**683. Mohave. Cedar. Benedictine Mining Co.** Incorporated in Arizona 1908. Issued to B. Hayes Anderson for 360 shares, cert #322, in 1908. Signed by Wm. C. Codd vice president and Andrew J. Reilly treasurer. Vignette at top of spread winged eagle. Green border with gilt seal. Printer - Wm F. Murphy. 9 x 12. The company controlled the Cedar group in the Cedar district. The company suspended operation in 1907 and never got restarted. (Copper Handbook, 1908, p.364). Mount Benedict was settled as a small mining camp which was originally known as Gold Hill. The name was to changed to Benedict after an old prospector. (Barnes, Arizona Place Names, 1988, p.43). Tears along fold creases. Very fine. Est. \$25-75

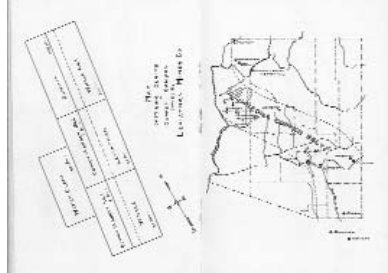
**684. Mohave. Cedar. Gold Hill Mining Co.** Incorporated in Territory of Arizona 1903. Issued to Richard Arnold for 100 shares, cert #55, in 1904. Signed by Richard Arnold president and Nathan F. Giffin secretary. Vignette of a the Capital Building in Washington, D.C. Green border . Uncancelled. Printer - Broun-Green NY. 9 x 11. Not listed in the Copper or Mines Handbooks. The company was probably located near Gold Hill, which was more formally known as Mount Benedict which was located 4 miles northeast of Nogales. There was once a ranch and a mining camp which is no longer there (Barnes, Arizona Place Names, 1988, p.43). Wear to folds with one inch tears on each fold crease at both top and bottom. Foxing along the fold creases and along top and bottom edges. Fine. Est. \$25-50



**685. Mohave. Cedar. Hope Mining Company of Arizona.** Incorporated in Arizona in 1892. Certificate number 19 issued to Allan Emons for 1000 shares in 1893. Signed by Vice-President J. L. Cunningham and Secretary Willis A. Barnes. Printer not noted. Dated New York. Vignette over masthead of bald eagle clutching arrows and shield. Uncancelled. Folds. Black border and print with orange safety print on white paper. 8 x 10. There were at least two Hope companies in Arizona. The first, this company, had the Hope mine in the Cedar Valley district. It became active about 1880, and Hamilton in *Resources of Arizona* (1884) considered it one of the top mines of the district. There may have been small production until taken over by the Hope Mining Co. of Arizona in 1893. We suspect activity was minimal, since the company was not listed in the 1892 (company not yet created) or 1898 editions of the *Poole Bros. Mining Directories*. A much later company

formed about 1920, known as the Hope Mining & Milling Co., was active in the Turquoise District of Cochise Co., which owned the Humboldt, Mame and Mary mines. [Kieth, 1973] We do not believe these two companies were related. Est. \$100-200

**686.** Mohave. Cedar. **Leviathan Mines Co.** Incorporated in Arizona 1914. Issued to M. W. Lee for 1000 shares, cert #2824, in 1918. Signed by Theo Hollister president and C. S. Tremelling asst. secretary. Vignette at left of spread winged eagle atop domed building. Black border with gilt seal and bronze safety print. Uncancelled. Printer - Goes. 8 x 11. Property included the Whale & Copper mines in Copper Canyon within the Cedar district. The ore was reported to assay at 2-4.5% molybdenum, 2-3% copper, 2-6 ounces silver and \$1 gold per ton. There was a concentrating plant that had a 50-70 ton daily capacity. (Mines Handbook, 1918, p.371-72). Blue rubber stamp at right edge. Trimmed tight but appears to be from the printer in this fashion. Very fine. Est. \$25-50



**687.** Mohave. Cedar. **Leviathan Mines Co Prospectus 1915.** The prospectus contains 35 pages and is 4 x 6. There are a few black and white photos, a cross-section of the mine, claim maps for the area and a generalized map of the major copper mines of Arizona. Pages 17-20 are detached from stapled binding. Very fine. Est. \$50-150

**688.** Mohave. Cedar. **Leviathan Mines Co.** Incorporated in Arizona. Issued to F. E. Hayward for 100 shares, cert #1811, in 1917. Signed by A. J. Brawley vice president and Geo H. Prudden secretary. Vignette at left of miners underground. Black border with bronze seal and safety print. Uncancelled. Printer not noted. 8 x 10. See lot above for the story. Very fine. Est. \$25-50



**689.** Mohave. Cedar. **Yucca Cyanide Mining & Milling Co. Inc.** in Terr. of AZ, 1899. Issued to Theo Chester for 1000 shares, cert #1225, in 1904. Signed by W. F. Lewis pres and C. D. Pickering sec. Vignette at top center of a mill next to stream in a valley with two smaller vignettes of miners working underground at upper corners. Black border with gilt seal and gold safety print. Uncancelled. Printer - Goes. 6 x 10. Not listed in the Copper Handbooks. The company owned the San Francisco group and operated a 10 stamp mill. The mill was capable of amalgamating, concentrating and cyanide treatment. There was a 600 foot shaft. (Mineral Resources, 1907, p.172). No fold creases. Extremely fine. Est. \$25-50

**690.** Mohave. Cedar Valley. **Arnold Gold & Silver Mining Company.** Incorporated in California in 1877. Certificate number 147 issued to Philip L. Horn for 130 shares in 1881. Signed by President Edward P. Bates and Secretary A. Gordon. Printed by Britton & Rey, SF. No vignette. Uncancelled. "Location Cedar Valley Mining District, Mohave Co., Arizona Terr." Black border and print on white paper. 4 x 9. Includes assessment receipt from Horn for \$255. Cedar Valley camp was located about 60 miles east of the Colorado River and about the same distance south of Mineral Park. Hamilton (1884, p. 225) reported the ore a sulphuret of silver in veins in granite. A 10-stamp mill was operating in the district and many of the mines had shown a large amount of development. The camp had produced over \$60,000 with only "crude appliances for ore reduction", and held great promise for continuous and steady shipment of bullion. The Arnold, Hibernia, Hope, Silver Queen and Bunker Hill were the principal mines operating at the time. Horn was a stevedore in San Francisco. Horn and Gordon were stevedores in San Francisco. [1875, 1879 SF dir] Est. \$200-500

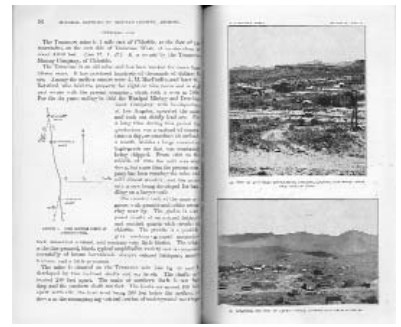


**691.** Mohave. Cedar Valley. **Waldron MC.** Cert. #95. Inc. in AZ, 1918. Issued to M. Peiffer for 1000 shares in 1918. Signed by pres George Hill and sec Chas H. Wagener. Uncancelled. Was a reorganization of the Arizona Venture Corp., which owned 5 groups and 12 claims, spread over nearly 240 acres. In 1915 the former company announced the production of "lenzite", used for wireless telegraphy, which prompted the incorporation of the Lenzite Crustal Corp. However, the company was still under the watchful eye of Weed, who claimed that any commercial value still had to be proved. By 1925 the company was defunct (Ref: Weed, 1920, p.264; 1925, p.494). Vignette of men working in underground mining scene. Black border, orange underprint and gilt seal. No printer noted. 8" x 10 1/4". Vf, tears at folds. Est. \$25-50

**692.** Mohave. Cedar Valley. **Yucca Mining Co.** Incorporated in Arizona 1911. Issued to Theodore Chester for 100 shares, cert #2, in 1911. Signed by J. H. Coleman president and Theo Chester treasurer. Vignette of a mill next to a stream in a valley with smaller vignettes at each corner. Uncancelled. Printer - Goes. 8 x 11. This is a **founder's share** issued certificate. Not listed in the Copper Handbooks. There was the Yucca Arizona Copper Co that was mining copper and a Yucca Tungsten Co that was mining tungsten in Cedary Valley district. (Mines Handbook, 1918). Slight wear to folds. Extremely fine. Est. \$50-100



**693. Mohave. Cerbat Range. Mineral Deposits of the Cerbat Range, Black Mountains, and Grand Wash Cliffs, Mohave County, Arizona.** Department of the Interior United States Geological Survey, George Otis Smith, Director, Bulletin 397, by F. C. Schrader. **1909.** 226 pages. This bulletin covers the geology, mineral deposits, and mines in the Cerbat Range, Black Mountains, and Grand Wash Cliffs area. There are black and white pictures of some of the mines as well as ore samples. There are drawings showing claims, ore deposits, and underground workings. There are tables containing mine outputs. This bulletin is hard bound with a dark green cover, with gold writing on the binding edge. The bulletin pages are glossy white paper with black print. The first page is torn, with some smudging. One of the maps is torn also. Very good condition. Size.5 1/2 X 9". Est. \$50-100



**694. Mohave. Cerbat. Altata Mining Company.** Incorporated in Arizona. Twenty-five dollar, five year, six percent first mortgage gold bond number 424. Signed by President J. F. McBride and Secretary W. A. Barr. Printed by J. W. Middleton & Co., Chicago. Vignette of three allegorical figures. Folds. Three of 10 coupons remain. Brown border with black print on white paper. 9 x 14. The company is mentioned by Tenney (1929, p. 352) as one of several of the smaller mines in the Chloride, Cerbat, Mineral Park area that operated on a more or less regular basis after completion of the railroad to Chloride in 1899. [Weed, v12]. Very fine. Est. \$50-100

Partial. Lot #696 is also this style

**695. Mohave. Cerbat. Altata Mining Co. Cert. #409. 6% First Mortgage Gold Bond.** Incorporated in Arizona. For value received, 1906. Signed by president J.F. McBride and secretary W. Barr. Uncancelled. Ores carry gold, silver, lead and copper, with precious metals of predominating value. With plans to erect a concentrating plant, the Altata mine was opened by shaft and operated by gasoline power (Ref: Stevens, 1906, p.178). Vignette of an allegorical figure flanked by two lounging allegorical figures. Brown border, with spread-winged bald eagle across the top. Printed by J.W. Middleton & Co. Vf, folds. 14 3/4" x 9". Est. \$50-100



**696. Mohave. Cerbat. Altata Mining & Milling Co Stock.** Incorporated in Territory of Arizona 1909. Issued to George E. Payne for 40 shares in 1909. Signed by Charles E. Rausch president and Nettie C. Kenner secretary. Vignette of several miners working underground. Orange border, seal, underprint and safety print. Uncancelled. Printer - Goes. 8 x 11. There is no listing in the Copper or Mines Handbooks for this company. There is an Altata Mining Co that is listed in the Copper Handbooks has having its mine in Chloride. The officers for this company are different than those listed for the Altata MC. The Altata MC was dead by 1910. Perhaps the Altata Mining & Smelting Co may have formed as a subsidiary of the Altata MC. (Copper Handbook, 1908, p.289). Small tears along fold creases. Very fine. Est. \$25-50



**697. Mohave. Cerbat. Cerbat Mining Company.** Incorporated in New York in 1879. Certificate number 109 issued to Harrie Webster for 100 shares in 1879. Signed by President A. W. ??? and Secretary F. S. Oakes. Dated Cattaraugus, NY. Vignette upper left of bald eagle on rocky crag. Black border and print on white paper. "Mines located in Mohave Co. Arizona". The Cerbat district is located north of Kingman near Mineral Park. Some of the richest silver ore found in Arizona was mined from this district. A number of mines were operating at the time this certificate was issued, however we have been unable to determine which properties the company owned. Very fine. Est. \$200-400

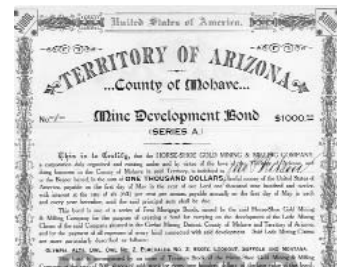
**698. Mohave. Cerbat. Grand Cons Development Co.** Incorporated in Arizona. Issued to Robert A. Neely for 2500 shares, cert #291, in 1908. Signed by Geo. W. Brown president and Jno. F. Firch secretary. Vignette at top center of a spread winged eagle with two circular vignettes of underground scenes with gargoyles. Ornate green border and safety print with gilt seal. Uncancelled. Printer - New York Bank Note. 8 x 11. Dated Oakland, Cal. The company had a mine the gave assays of 34% copper, 9 ounces silver and \$12 gold per ton. The mine office address was listed as Kingman, no other information was offered. The company also had claims near Cerbat, that gave assays of 70% lead, 12 ounces silver and \$11 gold per ton. The company was idle and presumed dead by 1910. (Copper Handbook, 1910, p879). Several staple holes at top left. Slight foxing along edges. Extremely fine. Est. \$75-150



**699. Mohave. Cerbat. Horseshoe Gold Mining and Milling Company.** Incorporated in Arizona in 1907. Certificate number 128 issued to J. P. Wilson in 1908 for 10,000 shares. Signed by President J. W. Thorn and Secretary J. W. Moore. Printed by the Neuner Co. Vignette top cen-

ter of mill buildings and railroad along river; at top left, 3 miners inspecting rock sample; and top right of 4 miners working underground. Dated Kingman, Arizona. Black print with green border and seal on white paper. 8.5 x 11. The company owned the Olympia, Alta, Owl, Owl No. 2, Esmeralda No. 2, Essex, Lookout, Suffolk and Montana claims in the Cerbat mining district. Of the mines listed on the company's Mine Development Bond (which see) only the Esmeralda is mentioned in Wilson, et al (1967, p. 114) and Schrader (1909, p. 97). Neither author makes mention of the Horseshoe GM&MC, however. At the time of Schrader's visit the mine was owned by the Ark and San Antonio Mining & Milling Co. Production from this mine reportedly was \$90,000. The ore consisted of pyrite and chalcopyrite with gold and silver. One carload of concentrates shipped from the mine reportedly ran 13.42 ounces of gold and 40 ounces of silver to the ton. Very fine. Est. \$25-75

**700. Mohave. Cerbat. Horseshoe Gold Mining and Milling Company.** Incorporated in Arizona in 1907. Certificate number 224 issued to Jno. P. Wilson in 1909 for 5,000 shares. Signed by President J. P. Wilson and Secretary Robt. P. Hardegen. Printed by the Neuner Co. Vignette top center of mine site below hills; at top left, 2 miners working underground; and top right of 5 miners working underground. Dated Kingman, Arizona. Black print with gold border, safety print and seal on white paper. 8.5 x 11. See description of company above. Est. \$25-75



Partial.

**701. Mohave. Cerbat. Horseshoe Gold Mining and Milling Company.** Incorporated in Arizona in 1907. \$1,000 Mine Development Bond number 1 issued to Jno. P. Wilson in 1909. Signed by President J. P. Wilson and Secretary Robt. P. Hardegen. Printer not noted. No vignette. Black print with brown border, underprint and seal on white paper. 10 x 15. See description of company above. Est. \$25-75

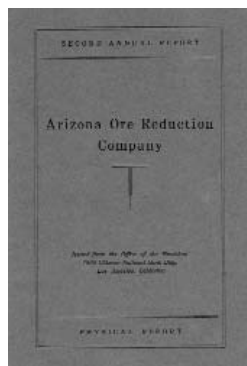
**702. Mohave. Chemehuevis. Big Bear Mining Co.** Incorporated in Arizona. Issued to H. Haussner for 250 shares, cert #375, in 1907. Signed by H. W. Ferlong president and W. J. Codges secretary. Vignette of a mining camp on a treeless slope with two smaller vignettes of miners underground. Bronze border, seal and safety print. Uncancelled. Printer -Goes. 8 x 11. Chemehuevis was named so after a Shoshone tribe, who occupied territory from Bill Williams Fork to the Needles, also just west in CA, in Chemehuevi Valley (Ref: Arizona Place Names, Barnes, p.88-89; Arizona Mines Dir.). Very fine. Est. \$25-75



**703. Mohave. Chemehuevis. Owl Mining Co.** Incorporated in Territory of Arizona. Issued to H. G. Crowe for 1000 shares, cert #438, in 1903. Signed by John Akins secretary and G. F. Hawks president. Vignette at upper left of two miners working underground. Gold border, seal and safety print. Uncancelled. Printer - Goes. 8 x 11. This company is not listed in the Copper or Mines Handbooks. There is an Owl claim in the Chemehuevis district (Wely et al, Mines Index..., 1985). In Pinal County, there was an Owl Head mining district that named for two closely spaced peaks that resembled an owl's head. There was a company by the name Owl Head MC that reorganized to Owl Copper Co. Small tears along fold creases. Very fine. Est. \$25-50

*Please see lots 694, 695 & 696 for three more Chloride pieces.*

**704. Mohave. Chloride. Arizona Magma Mining Co.** Incorporated in Arizona 1925. Issued to Alma Bains Levering for 100 shares, cert #B162, in 1928. Signed by C. S. Carpenter president and Vic E. Harvey secretary. No vignette. Fancy masthead. Black border and print with bronze seal. Uncancelled. Printer - Goes. 8 x 11. The company owned the Diana mine, Bella Union, George Washington Extension and the Spargo group all located around Chloride. The Diana was opened by a 500' shaft and the George Washington by a 125' shaft. There was a hoist, compressor, flotation plant and even a bunk house that was able to house 35 men. (Mines Handbook, 1931, p.256). Staple holes and staple at upper left. Two inch tears along fold creases. Chip and two inch tear just to the right of the left fold crease. Fine. Est. \$25-50



**705. Mohave. Chloride. Arizona Ore Reduction Co.** Second Annual Report, 1918. 24pp, 6 x 8" with folding map in back of the properties. The company produced over 100,000 tons of ore at a value of about \$29 per ton. Reserves shown. XF. Est \$75-150.

**706.** Mohave. Chloride. **Aztec Turquoise Co.** Incorporated in West Virginia 1900. Issued to Jane B. Graw for 100 shares, cert #217, in 1904. Signed by John Elsey president and E. Graw secretary. No vignette. Blue border and print. Uncancelled. Printer - W. E. Badeau, NY. 6 x 10. Dated *New York*. Not listed in the Copper or Mines Handbooks. The company employed 15 men and was located in the Chloride district. (Pacific Coast Mines Directory, 1906, p.52). Garbani indicates the company may have had their operations at Mineral Park. Fold crease at upper right corner. Turquoise district stocks are extremely rare. Extremely fine. Est. \$50-150



**707.** Mohave. Chloride. **Aztec Turquoise Co Turquoise Nugget.** This nearly 6 pound turquoise nugget is reportedly a salesman's sample from the Aztec Turquoise Co. The nugget has not been treated and is in its original state. There are several cracks but the nugget is sound. Approximately 8" in diameter, polished. Attractive. Fragile. Est. \$500-1000

**708.** Mohave. Chloride. **Cerbat Silver Mining & Milling Co.** Incorporated in Delaware. Issued to Sidney S. Lenz for 100 shares, cert #601, in 1919. Signed by C. C. Perdoe president and F. E. Steele secretary. Vignette of a mill which may be the actual operations of the company. Uncancelled. Printer - Broun-Green Co. 9 x 12. Property was under a 10 year lease with a continued 10 years from the Elkhart Mining Co. Mines included the Elkhart, Argyle and Edgar which were located in the Chloride district. There were two shafts of 200 and 500 feet with over 2000 feet of workings. Ore reserves were stated at \$500,000 with probable reserves of \$1 million. (Mines Handbook, 1920, p.248). Wear to folds. Some wrinkling at edges. Very fine. Est. \$50-100



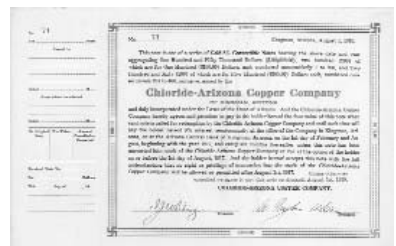
**709.** Mohave. Chloride. **Chloride Cons Mines Co.** Incorporated in Arizona 1929. Issued to Mrs. Law Ryan for 100 shares, cert #362, in 1930. Signed by W. Donald Nickelson president and M. W. Shaw secretary. Vignette of a mining camp on a treeless slope with two smaller vignettes of miners underground. Gold border, seal and safety print. Uncancelled. Printer - Goes. 8 x 11. The company owned property near Chloride. The company was planning on deepening the shaft to 500 feet and digging more than a 1000 feet of tunnels. (Mines Handbook, 1931, p.A-17). Extremely fine. Est. \$25-75

**710.** Mohave. Chloride. **Chloride Queen Mining Co.** Incorporated in Arizona. Issued to Mark Butsworth for 100 shares, cert #731, in 1918. Signed by C. C. Thompson president and Robert A. Jarrott secretary. Vignette of a mill next to stream in a valley. Green border and seal. Uncancelled. Printer -Goes. 8 x 11. The company owned the Sunday School and Silver Mountain groups located near Chloride. (Mines Handbook, 1918, p.365). Three inch crease at bottom of left fold that runs to the right side of the embossed seal. A few chips along edges affecting right third. Very fine. Est. \$25-50



**711.** Mohave. Chloride. **Chloride X-Ray Mining Co.** Incorporated in Arizona 1916. Issued to Mary E. Newcomer for 250 shares, cert #83, in 1917. Signed by Smith Chittick president and A. W. Galpin secretary. Vignette at upper left of a woman with an American flag, shield and a spread winged eagle. Black border with green seal and safety print. Uncancelled. Printer - Goes. 8 x 11. Property included the Hillside group located at the base of the Rainbow Mountains in the Chloride district. The property had a 640 foot shaft that intercepts ore that assayed at \$30 per ton with silver, gold and lead. (Mines Handbook, 1918, p.365-66). Extremely fine. Est. \$25-50

**712.** Mohave. Chloride. **Chloride-Arizona Copper Co.** Incorporated in Arizona 1916. Gold 8% Convertible Note, cert #71, dated on reverse as 1917. Signed by M. Taylor Uler president and I. J. Whitney treasurer. No vignette. **Gold border with swastikas at corner.** Title in gold print, with black and red print. Uncancelled. Printer not noted. With the attached stub, the piece measures 8 x 13. Signed on reverse by Ross H. Blakely, Notary Public, Mohave County with embossed seal by him. Property included the Hidden Treasure, Revenue, Chenango and Oro Fino claims located 2.5 miles south of Chloride. There were several tunnels that were attempting to access the Treasure Hill and Oro Fino veins. This company is not listed in the Mines Handbooks. They may have had their operations in the Chloride area or the company was just a scam. Mint Condition. Est. \$50-100

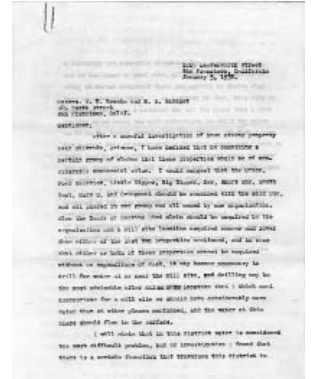


713. Mohave. Chloride. **Elkhart Mining Company.** Incorporated in Arizona in 1901. Certificate no. 74 issued to F.B. Haynes for 100 shares in 1907. Signed by Ezra Shelley, president and E. S. Forderer, secretary. Black border, gold safety print and seal, gold underprint "shares \$1.00 each", vignette of elk in upper left, uncanceled, 8 x 10, VF condition with folds. Company held silver-lead mine in Chloride district, Mohave county with a 100 ton per day mill. [Ref: 1906Pacific Coast Mines Directory, p.52]. Est. \$25-50



714. Mohave. Chloride. **Gold Bug Mining Co.** Incorporated in Territory of Arizona 1905. Issued to Charles Pike for 500 shares, cert #350, in 1909. Signed by Herbert E. Young president and W. S. Otis treasurer. Vignette of four miners working underground. Brown border and underprint. Uncanceled. Printer - ABN. 7 x 11. Property located on the eastern slope of the Black Mountains about 30 miles northwest of Chloride. The mine was first discovered in 1893 with ore carrying gold in iron oxide. (Wilson et al, 1934, p.78, 137: Koschmann & Bergendahl, 1968, p.41; E&MJ, 1910, p.338). Not listed in the Copper or Mines Handbooks. Extremely fine. Est. \$50-100

715. Mohave. Chloride. **Gold Bug and Gold Center Mining Groups Prospectuses.** These papers report on the geology of the area, description of the ore bodies, assay values, and mill installation costs. 10 pages. Size 8 1/2 X 11". Very fine. Est. \$50-100



716. Mohave. Chloride. **Grand Boy Mining & Milling Co.** Lot of 4 pcs. Incorporated in Territory of Arizona 1907. Issued to Chas. E. Patterson for 12,400 shares, cert #136, in 1909. Signed by Horace Lucy vice president and Wm. Batterman secretary. Vignette of several miners working underground. Brown border, seal and safety print. Uncanceled. Printer - Goes. 8 x 11. Not listed in the Copper or Mines Handbooks. There are two documents that are powers of attorney handing over proxy votes in this company signed by the president of the company Chas E. Patterson, same as the issue of this certificate. One of the documents is datelined Chloride, Arizona, 1908. Fold crease at left edge. Extremely fine. Est. \$25-50

717. Mohave. Chloride. **Kingman Zinc Mining Co.** Incorporated in Arizona 1915. Issued to Arnold Rosewinkle for 100 shares, cert #182, in 1916. Signed by B. X. Dawson president and E. A. Dawson asst secretary. Vignette at upper left corner of a woman with an American flag, shield and spread winged eagle. Black border with green seal and safety print. Uncanceled. Printer - Goes. 8 x 11. Datelined *Kingman, Arizona*. Two 0.5 cent U. S. documentary stamps affixed at bottom center. Property was located in the Chloride district some six miles from the AT&SFRR. The ore was of silver and zinc. "Not favorably regarded, as the promotions of Mr. B. X. Dawson are looked upon with suspicion by many people." (Mines Handbook, 1925, p.358). Zinc company certificates are rare. Extremely fine. Est. \$50-150

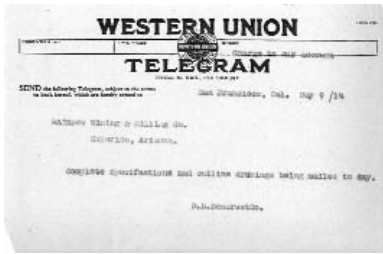
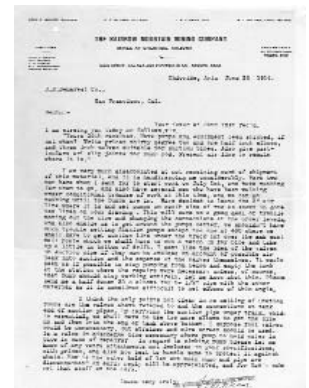


718. Mohave. Chloride. **Mines Operating & Leasing Co.** Incorporated in Territory of Arizona. Issued Edwin H. Lowne for 500 shares, cert #162, in 1911. Signed by Fred John vice president and J. W. McCoy secretary. Vignette of spread winged eagle. Black border and gilt seal and gold safety print. Uncanceled. Printer - Goes. 6 x 11. Not listed in the Copper or Mines Handbooks. Garbani places this company at Chloride. Extremely fine. Est. \$25-50

719. Mohave. Chloride. **Minnesota-Conner Mining & Milling Co.** Incorporated in Arizona 1910. Issued to J. S. Freemann for 500 shares, cert #104, in 1912. Signed by H. J. Lewis president and J. S. Freemann secretary. Vignette of a spread winged eagle. Green border and underprint. Uncanceled. Printer - E. A. Wright Bank Note. 8 x 12. The company owned 13 claims located 1.5 miles from Chloride. There was a 725 foot vertical steel lined shaft with four inclines. The property was said to show outcroppings of 17 different veins. Production totaled \$1.5 million by the end of 1916, when the company shut down for lack of funds. (Mines Handbook, 1920, p.258). Foxing along left edge. Staining along top of right fold crease. Very fine. Est. \$25-75



**720. Mohave. Chloride. Rainbow Mountain Mining Company Correspondence, c.1914.** Incorporated in 1907 in Arizona. Letter collection of 42 pages from files of D.D. Demarest Company, a mine supplier in San Francisco, California, 8 1/2 x 11, mostly carbon copies, one original of correspondence dated 1914, between the mine at Chloride, Arizona and Demarest. The mine was ordering mining parts from Demarest, and in particular, a pump to handle the water. An original letter signed by H.L. McCarn, general manager and treasurer, inquired of Demarest "Have pumps and equipment been shipped, if not when?" The letter ended with "An early reply will be appreciated, and for God's sake get that stuff on the cars". The Rainbow Mountain mine at Chloride was developed by a 440 ft. deep shaft in 1915, with much water encountered at the bottom. The mine had 4,000 ft. of workings including 780 ft. of tunnels. Company had blocked out 1,500 tons of ore averaging \$20 in gold (1 ounce per ton), 10 ounces silver per ton, and 6% lead. The mine also had a 2-mile aerial tram. The mine made shipments to the Needles smelter at different times. Five of the letters were to Tom Reed Gold Mines Co., a gold-silver mine in the Oatman district, Arizona. One of the letters was to Ran Consolidated Copper Co. [1916CH, p.958]. Est. \$25-75



**721. Mohave. Chloride. Rainbow Mining & Milling Co. Telegram, 1914.** Dated San Francisco, 1914, from D.D. Demarest Co. 5" x 7". Vf, three corners missing. Est. \$10-20

**722. Mohave. Chloride. Samoa Gold Mines Corp.** Incorporated in Delaware. Issued to Robert Simpson for 100 shares, cert #207, in 1932. Printed signatures. Vignette of two miners operating a drill. Green border and underprint. Uncancelled. Printer - Hamilton Bank Note. 8 x 12. This company probably owned the Samoa mine that was locate 3.5 miles east of Chloride in the Wallapai district. No production numbers available. Extremely fine. Est. \$25-50



3.5 miles east of Chloride in the Wallapai district. No production numbers available. Extremely fine. Est. \$25-50



**723. Mohave. Chloride. Treasure Vault Gold Extension Inc.** Incorporated in Arizona 1927. Issued to M. B. Dudley for 1000 shares, cert #401, in 1927. Signed by M. B. Dudley president and Chas. H. Maxcy secretary. Vignette at upper left corner of three miners working underground with an ore car behind. Bronze border, seal and safety print. Uncancelled. Printer - Goes. 8 x 11. The company is not listed in the Mines Handbooks. However, the president, M. B. Dudley is also president of Katherine Treasure Vault Gold Inc and Treasure Vault Mining Co. The latter was formed to take over the Pilgrim mine located near Chloride. The Pilgrim mine was formerly owned by the Pilgrim Mines Inc. No other direct information offered for the Treasure Vault Gold Extension Inc. (Mines Handbook, 1931, p.440). Minor wear to fold creases. Some staining along edges. Very fine. Est. \$20-40

**724. Mohave. Cleopatra. New England Homestake Co.** Incorporated in Arizona 1906. Issued to Charles A. McConville for 1000 shares, cert #156, in 1906. Signed by president and Edward F. Rice treasurer. Vignette of a mill next to a stream in a valley. Green border and seal. Uncancelled. Printer - Goes. 8 x 11. We could find no listing for this company. There is a New England mine listed in ABM Bull 196 (1985) located in the Cleopatra district of Mohave County, but we found no reference linking this company to this mine. District from Garbani 2001. Extremely fine. Est. \$ 25-50



**A NOTE ON 1863-1864 ARIZONA MINING COMPANIES.**

Companies and stock certificates from Arizona during this period are very rare. There are virtually hundreds of different Nevada and California 1860's stocks known from this period, but why so few Arizona? *Mining And Scientific Press* published a list of the 1863 companies that were summarized by Doug McDonald in *Mines of the West, 1863* (1996). That list includes 2,933 gold, silver, copper, and tunnel mining companies organized in California in 1863, which was the hotbed of activity. Very few were eastern financed. Of that list, only 49 were Arizona companies. **That translates into only 1.67% of the companies are Arizona. Thus for every 100 different Nevada Territorial certificates, you might only find one Arizona piece.** The Press went on to say: Most mines represented by these shares are intended to be worked or their projectors would scarcely go to the expense of incorporating them." Because of the high rate of assessments placed on the stock companies, the press wrote that \$1.5 million per month was needed to prospect. It was more than the market would bare, thus the collapse of most of the 1863 companies fairly quickly. [MiSciPr 1/30/1864]

WINE SPECTATOR AWARD WINNER



INSPIRED DINING AMONG THE PINES

*“A hot dinner destination”*  
Bon Appétit Magazine

**GALENA FOREST**  
RESTAURANT BAR

17025 Mt. Rose Highway, Reno

Reservations: 775-849-2100

Visit our website at [www.galenaforestrestaurant.com](http://www.galenaforestrestaurant.com)

Open Tuesday–Sunday

Hours: Bar 4–11 p.m. Restaurant 5–10 p.m.

**WASHOE.**

*“Continuing a  
30-year tradition  
as Reno’s favorite  
steak house”*

■  
Serving great classics including  
choice angus steaks,  
prime rib, fresh seafood  
and chops.  
■

4201 West Fourth Street  
Two miles west of downtown Reno  
Reservations Recommended: 775-786-1323  
Lunch served Monday–Friday  
Dinner served seven nights a week



Craig Cunningham, Proprietor

*These guys know how to cook! Galena Forest is our favorite restaurant -- it's romantic, beautiful, relaxing and up in the pines, yet still near town. We don't take ads -- I've got this one here just for our friends who come to our auctions. We love this restaurant and know you will too!*

*Fred Holabird*