

GRAHAM

550. Graham. Aravaipa/Stanley. Geology and Ore Deposits of the Aravaipa and Stanley Mining Districts, Graham County, Arizona. Department of the Interior, Hubert Work, Secretary, United States Geological Survey, George Otis Smith, Director, Bulletin 763, by **Clyde P. Ross 1925.** 120 pages. The book covers the geology, ore deposits, and mines in the Aravaipa and Stanley mining Districts. Book has pictures of ore deposits and geological maps. Gray cover with black print. Cover has tape on it to hold it together. White pages with black print. Good Condition. Size 6 x 9". Est. \$25-75



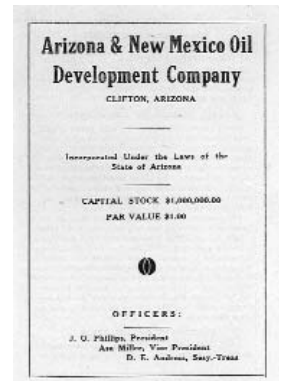
551. Graham. Black Hawk. Advance Mining Co. Incorporated in West Virginia 1906. Issued to Edward O. Douglas for 278 shares, cert #136, in 1906. Signed by John Manning president and Schuyler S. Moore secretary. Vignette of two miners working underground. Brown border and sunset scene. Uncancelled. Printer not noted. 8 x 11. This company formed as a successor to Graham County Mining Co which itself was a successor to the Spnazuma Copper Co. The latter was a swindle by the notorious Dr. Flower, whose name has appeared with several of our descriptions for other companies. Further this company had as its consulting engineer the infamous Prof George A. Treadwell who is mentioned under the George A. Treadwell Mining Co. The company claimed to own 27 claims in the Black Rock district and 18 gold claims in the Clark distict of Graham and Greenlee Counties. The company was idle since its organization except for annual assessment work. This company is just one of the many scams that we have documented in Arizona. (Copper Handbook, 1910, p.272). We believe that the Black Rock mentioned here as found within the Copper Handbooks was a transposition of Black Hawk district. The Black Hawk district is immediately adjacent to the Clark district (as found within Welty et al, Mine Index for Metallic Minerals Districts of Arizona, 1985). Therefore, we are satisfied that this was a mistake and have placed the company in Graham County, Black Hawk district. (Extremely fine. Est. \$25-75

552. Graham. Black Hawk. Inspiration Central Mining Co. Incorporated in Arizona 1916. Issued to R. H. Dymon for 500 shares, cert #854, in 1919. Signed by M. E. Tester president and Chas. B. Yett secretary. Vignette at upper left of several miners underground with smaller vignettes at each corner of a miner. Black border with green seal and safety print. Uncancelled. Printer - Goes. 8 x 11. This company owned 43 claims 14 miles west of Geronimo in the Turnbull and the Santa Theresa Mountains within the Black Rock district. (Mines Handbook, 1920, p.230-31). We believe that the Mines Handbook made a transposition error with Black Rock. We believe that it should be the Black Hawk district. We found this same mistake with the Advance Mining Co (which see). Welty et al (Mine Index for Metallic Mineral Districts of Arizona, 1985) offers more specific information. Small tears along fold creases. Very fine. Est. \$25-50



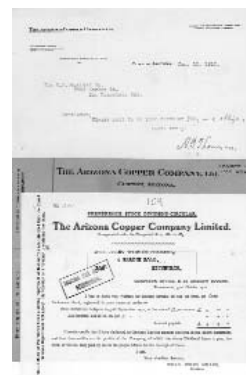
553. Graham. Clark. Graham County Mining Co. Incorporated in West Virginia 1902. Issued to Margaret Watson for 1 share, cert #620, in 1902. Signed by John W. Manning president and Schuyler D. Moore secretary. Vignette of three miners working underground. Green border and sunset style design. Uncancelled. Printer - Henry F. Birgel, NY. 8 x 11. Two 2 cent documentary and one 1 cent documentary stamp affixed at upper right reverse. Prof Geo A. Treadwell was the consulting engineer. This would indicate that the company was suspicious. Lands are gold and copper claims in the Clark district, Fort Grant, Graham County. The company was dead by 1910 and succeeded by the Advance MC. (Copper Handbook, 1908, p.730-31). Very fine. Est. \$25-75

554. Graham. Clifton. Arizona & New Mexico Oil Development Co. Prospectus. J.O. Phillips, president, and D.E. Andress, secretary. Located in the Sam Simon Valley, near Bowie. Oil was founded by a cow man who drilled a well for his cattle. If the water was not pumped regularly, oil residue would float on the top. This old cow man began investigating, testing different areas surrounding the initial discovery, finding gas pockets with considerable pools of oil found with some drilling. As they were preparing to install heavy drilling equipment, the man died, leaving any further exploration idle. The prospectus works to get investors interested in a potential gold mine, or oil well, in this case. 5" x 3". Vf, some chips out of bottom edge. Est. \$50-150



555. Graham. Clifton. Arizona Copper Co Book of Scrip, c. 1910. Sixty ride Commutation Ticket book on the Coronado Railway which was owned by the Arizona Copper Co, Ltd. All stubs are attached. **The Coronado Railway was the first railroad in Arizona.** Water stains at right edge. 2 x 4. Very fine. **R8 (Very rare).** Est. \$100-300

556. Graham. Clifton. **Arizona Copper Co. LTD. Documents.** Lot of 3 pcs. (1.) receipt from the Arizona Copper Co, Ltd for taxes paid for a woman who owned shares in the company and was from Edinburgh, England with an implied date in 1910. (2.) unused check with receipt stub attached. Blue ink on blue paper. Stub has Spanish and English. (3.) letterhead dated 1910. All very fine. Est. \$50-100



557. Graham. Clifton. **Ash Peak Extension Mining Co.** Incorporated in Arizona. Issued to Janet Powell for 800 shares, cert #236, in 1919. Signed by U. G. Scholl president and Fred Farrar secretary. Vignette at upper left of a man fighting a beast. Black border with gold seal, underprint and safety print. Uncancelled. Printer - Goes. 8 x 11. Owned 14 claims in the Clifton district and said to show good gold-silver values. Presumed idle. Property was sold at sheriff's sale to C. R. McFarlane and Robt. McDonald both of Duncan, AZ, to satisfy labor liens, in 1923. (Mines hdbk, 1925, p.250). XF. Est. \$25-50

558. Graham. Clifton. **New England & Clifton Copper Co.** Lot of 2 bonds. Incorporated in Maine 1903. Cert #D3131 & #F6321. These bonds are signed by E. Rollins Morsy president and C. E. Phippin treasurer. Both unissued. Vignette of many miners working underground. Black border with green safety print. The company voted to release bonds for sale in 1906, but never did before the company was bankrupt. See lot #560 for story.. Extremely fine. Est. \$25-75



559. Graham. Clifton. **New England & Clifton Copper Co.** Lot of 2 bonds. Inc. in ME, 1903. Cert #G15861 & #B2848. These bonds are signed by E. Rollins Morsy president and C. E. Phippin treasurer. Both unissued. Vignette of many miners working underground. Black border with green safety print and the other has brown safety print. The company voted to release bonds for sale in 1906, but never did before the company was bankrupt. See lot #560 for story on the company. Extremely fine. Est. \$25-75

Partial. Certs in lot #559 are the same style.



Lots 560 & 561 are both this style.

560. Graham. Clifton. **New England & Clifton Copper Co.** Inc. in ME, 1903. Issued to Lee Higginson for 100 shares, cert #1603, in 1907. Signed by E. Rollins Morsy president and C. E. Phippin treasurer. Vignette at upper left of two beehives. Black border with brown underprint and accents. Uncancelled. Printer no noted. 8 x 11. This company formed as a merger of the New England Copper Co and the Clifton Cons Mines of Arizona. Property included the New England, Clifton, Antietam and Copper King mines located 5 miles northwest of Clifton on the north side of the San Francisco River. Today, this would be considered Greenlee County, which came into existence in 1911. The various mines of the company showed considerable ore ranging from very high grade to low grade. From 1906 to 1909, production averaged about 1 million pounds of copper, 12,000 ounces of silver and 60 ounces gold per year. (Copper Handbook, 1910, p.1284-85). By 1912, the company was bankrupt and the property was sold at sheriff's sale to John K. Erksine who in turn sold the property to Phelps Dodge. (Copper Handbook, 1912, p.648). Very fine. Est. \$25-75

561. Graham. Clifton. **New England & Clifton Copper Co.** Incorporated in Maine 1903. Issued to R. Mackay Ball for 250 shares, cert #2256, in 1910. Signed by president and C. E. Phippin treasurer. Vignette at upper left of two beehives. Black border with green underprint and accents. Uncancelled. Printer no noted. 8 x 11. See lot above for the story. Very fine. Est. \$25-50

562. Graham. Clifton. **Sierra de Oro Gold Mining & Milling Co. Ltd of Arizona.** Inc. in Terr. of AZ. Issued to R. L. Frank for 100 shares, #107, in 1903. Signed by F. T. Aldridge pres and W. H. Waite sec. Vignette of a mill next to a stream within a valley with two smaller vignettes of miners underground. Green border and seal. Uncancelled. Printer - Goes. 8 x 11. Owned 15 claims adjoining the Clifton Cons. Ore assayed at 14% copper and \$10-48 gold per ton. The company was presumed dead by 1910. (Copper Handbook, 1905, p.723). Tape repairs to folds on reverse. Very fine. Est. \$50-100



563. Graham. Clifton. **Stevens Copper Co.** Incorporated in Maine 1902. Issued to Thomas P. Taylor for 5000 shares, cert #256, in 1903. Signed by Thos. P. Taylor pres & Fred Hunt treas. Vignette of a seated miner smoking with a miner pushing a wheelbarrow. Black border with olive green background. Uncancelled. Printer - J. Ottmann Lith, NY. Dated Portland, Maine. Stub attached at left indicates that this cert was an exchange for cert #238. The stub also informs us that Thomas P. Taylor was of Bridgeport, Connecticut. Owned 39 claims located 2 miles from Metcalf. The company shipped a little ore in 1906 which returned 12% to 30% copper. Considered promising but was idle since 1906. (Cop. Hdbk, 1910, p.1609). Extremely fine. Est. \$25-75

564. Graham. Clifton/Morenci (Gold Mountain.) **Copper King Mining Co.**, incorporated in Maine in 1881, issued 1889 to Grenville Whitney for 100 shares, signed by Hiram J. Prible as President and Henry C. Prible as Treasurer. Vignette top center of miners hoisting ore bucket at headframe. White paper, red border, black print. Printed by Samuel Hobbs & Co., Boston . 7 x 10". Uncancelled. Folds. "Location of Mines, Clifton, Arizona." Cert No. 554. The company owned a group of mines about 5 miles north of Clifton on the San Francisco River. The mines included the Union 1 & 2, the New England and the Montezuma. Hamilton (1884, p 200) reported there had been little work done on the properties, but, "... wherever opened, they show strong, well-defined veins in a granite formation. The ore is an oxide and a copper glance, some of it going as high as twenty per cent." The company apparently operated for over a decade, but in 1891 the company blew in their smelter and ceased operations in 1892 (Canty & Greeley, 1987, p. 199). By the time Lindgren visited in 1902, the district had become a significant producer, but he makes no mention whether the Copper King Mine was again operating. Describing a system of veins on Markeen and Copper King Mountains, he states, "The most prominent deposit on this system of veins is the Copper King mine, which is situated only a few hundred feet below the summit of the mountain of the same name." (Lindgren, 1905, p. 22). Est. \$200-300



565. Graham. Clifton/Morenci. **Copper Deposits of the Clifton-Morenci District, Arizona.** By **Waldemar Lindgren. 1905.** Department of the interior, United States Geological Survey, Charles D. Walcott, Director, Professional Paper No. 43. 375 pages. This paper covers the general geology, ore deposits, and some of the mines in the Clifton-Morenci District. There are black and white pictures showing the geologic features, and some of the mines of the area. There are drawings of the underground workings of some of the mines. Geologic maps are included. The paper has a clear plastic cover with a red binding. Wear and folds on the cover and pages. Printed on white heavy glossy paper. Good condition. Size 9 X 11 1/2". Est. \$75-150

566. Graham. Copper Mountain. **Arizona Consolidated Copper Mines Ltd.** Incorporated in 1899 in England. Certificate number 1360 issued to Austin George Davies for 100 shares in 1917. Signed by Directors H. b. Clarke and N. M. Steward and Secretary H. S. Blake. No printer noted. No vignette. Uncancelled. Folds. Brown print on white paper. 11.5 x 13. The company had the Scioto, Lowland and Chillicothe mines in the Copper Mountain District. The company was bought in 1909 from the Continental Finance Syndicate, Ltd. Developed by 3 adits. Property lies adjacent to the Arizona Copper Company and the Detroit Copper Company near Morenci (Mines Handbook, Vol. XIII, p. 469-470). Very fine. Est. \$25-50

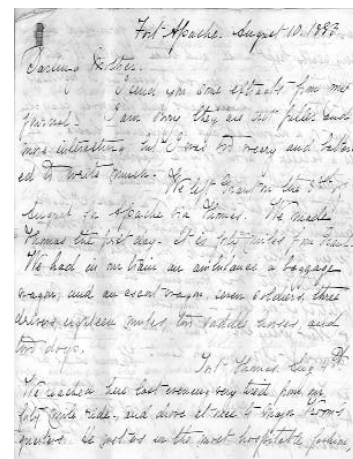


Partial.



567. Graham. Eureka. **Comstock Dexter Mines, Inc.** Incorporated in Arizona 1934. Issued to Geo. W. Loverjoy for 125 shares, cert #7943, in 1938. Signed by T. F. M. Fitzgerald president and A. L. Fitzgerald secretary. Vignette of miners shoveling ore into cars with an electric ore train. Orange border and safety print. Uncancelled. Printer not noted. 8 x 11. This company is listed as dead by 1946 (Mines Register). Extremely fine. Est. \$25-50

568. Graham. Evans. **Evans-Van Hecke Mining Co.** Incorporated in Territory of Arizona 1897. Issued to W. B. Macpherson for 5 shares, cert #260, in 1898. Signed by F. H. Evans president and D. H. Wilson secretary. Vignette at upper left of miners working underground with smaller vignettes at each corner. Black border with gilt seal and gold safety print. Uncancelled. Printer - Goes. 8 x 11. Dated *Evans Point, Arizona*. We could find no reference to this company within our library. Evans was a town located in Gila Valley where the post office was established in 1897, the incorporation year of this company. This combined with the dateline makes a strong argument for this placement. Two punch holes at left edge. Extremely fine. Est. \$50-150



569. Graham. Fort Apache and Fort Thomas. **Fort Apache Letter. Dated August 10, 1883.** Eighteen page letter written by a young woman and her child on a trip from Fort Grant to Fort Apache to deliver a \$5,000 cash payroll at Fort Apache. This incredibly descriptive text is well written and shows what it was like on a payroll delivery in remote Arizona. The entourage consisted of 7 soldiers, an ambulance, baggage wagon, 3 drivers, 16 mules, 2 saddle horses and 2 dogs. She describes Major Vail at Fort Thomas as "a bachelor of about 40, a magnificent looking soldier, and a well bred gentleman - I think rather the finest specimen of a man I have met in Arizona." ... "The man is a bourbon democrat after my own heart." She describes stopping at an "ill-smelling hole" the next day during a pouring rainstorm. "The open air life which I had read about and heard about as so charming was not..." "...for my own part I should prefer less freedom and less open air in mine."

“Cactus, Cactus, cactus - giant, ranting, gnarled and straight - often ten different varieties within a few dozen yards.” On the camping life she said: “The horrid old canned things taste wonderfully good under these circumstances, and let him who thinks he knows how good broiled bacon is, taste it in the field from the grid iron.”

“Major Clayton (the author’s husband) will not allow the men to waste their ammunition on game, thinking it may be needed to protect us and the cash before all this is over.” They were carrying a \$5,000 payroll. “The cash box is always carried at once to our tent, and his pistol lies always within easy grip.” ... “We have seen no sign of human habitation since we left Fort Thomas.”

Marvelous descriptive diary-like letter written at a time of Indian unrest. Est. \$500-1000

570. Graham. General. **Cordillera Mining Co.** Incorporated in Territory of Arizona 1907. Issued to A. H. Wrightman for 100 shares, cert #719, in 1908. Signed by G. A. McCrossan vice president and Chas. W. McCrossan secretary. Vignette at upper left of a spread winged eagle clutching an American flag. Black border with red seal and safety print. Uncancelled. Printer - C. W. Denning Co. 5 x 8. We could find no reference to this company within our library. Garbani indicates that the company was located in Graham County. Stain at right fold. Minor foxing along top edge. The term *Cordillera* is a broad term for a series of parallel mountain range systems typical of that found from the Rocky Mountains to the Pacific Coast. Very fine. Est. \$25-75



571. Graham. General. **Klondike Mine Letters.** Lot of 56 pieces. Circa 1918, this lot contains letters concerning samples along with assay reports for the Klondike mine. There are also letters concerning assignment of option. The letters are signed by J. F. Newsom and John Creighton. There is a map of the claims at the end. Size varies up to 8 1/4 X 14". Folds and some small tears. All letters are in very good condition. Est. 200-500

572. No Lot.

573. Graham. Klondyke. **Tri-Bullion Sm & Dev Co.** Incorporated in Arizona 1903. Issued to Gustave W. Foepfel for 100 shares, cert #283, in 1922. Signed by Jordan Wall president and R. O. Deyer secretary. Vignette of a mining camp set in a forest with two smaller vignettes of miners working underground. Green border and seal. Uncancelled. Printer - Broun-Green Co. 10 x 11. See lot above for the story. Very fine. Est. \$25-75



574. Graham. Klondyke. **Tri-Bullion Sm & Dev Co.** Incorporated in Territory of Arizona 1903. Issued to E. Dortkitt for 20 shares, cert #14671, in 1910. Signed by Howard Paschal president and John B. Corliss secretary. Vignette at left edge of miners operating a drill underground with a smaller vignette underneath of a mill. Green border, underprint and safety print. Uncancelled. Printer - Western Bank Note. 8 x 12. In 1910, the company owned the Starlight group, Stanley Butte district, Graham County, Arizona, claims in the Pipestone district, Jefferson County, Montana and the Kelly mine, Socorro County, New Mexico. The Kelly mine was the principal property and had a mill with several out buildings. The smelter returns for the Kelly mine, in 1910, were 25-35% zinc, 12-15% lead, 10 ounce silver and \$3.50 gold. The property was

under lease after 1910. The net income of 1910 was over \$100,000. (Copper Handbook, 1910, p.1695). In 1925, the company still owned its Arizona and New Mexico properties, but those were under lease with net royalties of just \$6600. (Mines Handbook, 1925, p.1581-82). Very fine. Est. \$75-150

575. Graham. Lone Star. **Rex Cobra Mining Co.** Incorporated in Territory of Arizona 1903. Issued to George H. Rodgers for 100 shares, cert #458, in 1905. Signed by B. D. King president and John S. Barlow secretary. Vignette of a mining camp on a treeless slope with two smaller vignettes of miners underground. Uncancelled. Printer - Goes. 8x 11. Dated Muskegon, Mich. Lands included 20 claims in the Lone Star district with a 540 foot shaft and over 700 feet of workings. Idle at the end of 1905. (Copper Handbook, 1906, p.856). Small tears along fold creases. Very fine. Est. \$25-75



576. Graham. Mayflower. Gila River Mining Co. of New Orleans, Louisiana. Incorporated in New Orleans, Louisiana, circa 1859. Unissued. "New Mexico and Arizona" at left. Printed by H. Whermann, New Orleans. Black border and print on vanilla paper. Dated New Orleans. 7 x 10. **Signed by C. Sternand (c1859)**

This company probably worked the placer deposits along the Gila River around Gila City about 1859-60, then went dormant with the onset of the Civil War, reorganizing in 1881, then got back into the mining business with new properties.. Gold was discovered in the Gila City area in 1858 by Jacob Snively (Hinton, 1878, p. 154; Mowry, 1864, p. 38) and during the next four years these deposits were worked by over 1000 miners, though rarely over about 200 at a time, according to historical writers. The success of these ventures led others to extend their exploration efforts beyond the Gila. In January of 1862, the Ehrenberg, La Paz and Olive City placers were discovered, drawing a host of miners from California. Certificates from these districts are included within this collection. **We have concluded this certificate must date from the early period, between 1859 and 1861.** Our reasoning is based on several lines of evidence. It is not likely to be earlier than 1858 since the placers in that river were discovered that year. The dateline printed on the certificate is 18___. This strongly suggests it was organized in the late 1850's, and printed this way to allow issue dates in both the 1850's and the 1860's to be entered. The vignette is of a bald eagle clutching a banner reading, "E Pluribus Unum", the motto of the United States first suggested in 1776. Louisiana seceded from the Union January 26, 1861, and it seems highly unlikely a Louisiana company would use the U. S. motto after that time. Also, the names Arizona and New Mexico are both printed on the certificate. The only time both names were associated with the Gila was when the river served as the boundary between the two territories. Prior to the Treaty of Hidalgo in 1858, land south of the Gila was owned by Mexico and the area to the north in what is now Arizona and New Mexico was known as New Mexico Territory. In 1856, when the Gadsden Purchase was finalized, land south of the Gila extending from the Colorado River to the Texas border became U. S. territory and was informally called "Arizona". In that year, local residents petitioned the U. S. Government to proclaim this area as a separate "Arizona Territory", but were largely ignored by Congress. The term "Arizona" first appeared on a map by Ehrenburg in 1858 referring to land obtained through the Gadsden Purchase. It more commonly began appearing on maps starting about 1859.

Now the story gets more interesting. While this company started out about 1859, they appear to have gone dormant with the onset of the Civil War. They re-emerged as a legitimate concern in 1881 with the *exact* same name, a different president and probably a different certificate, though none have surfaced to our knowledge.

At the outbreak of the Civil War, New Orleans businessmen converted their cash to Confederate currency. That would have ended efforts at mining ventures in the west, except for efforts for the Confederate cause, as illustrated by the San Augustine Company with headquarters at Mesilla, the Confederate capital of Arizona Territory. Then New Orleans fell to Union Forces in 1862, which would have thrown the financial system of New Orleans into complete chaos, obliterating any value to Confederate currency. It took another 10-15 years to recover, according to New Orleans officials today. No apparent attempt was made to take this company's holdings into the Confederate Territory of Arizona, as was the case with the San Augustine MC (please see that section in this catalog.)

Meanwhile, a group of seven men, who may have been part of the original group, reformed the Gila River Mining Co. of New Orleans and filed their new corporation in December of 1881. They had abandoned their interest in the Gila River placers (with good cause) and staked new claims in the 1870's in a different area. Joseph Hernandez (president), William L. McMillan, James D. Houston, Lionel A. Sheldon, Maurice J. Hart, Albert G. Brice, and Chas W. Newton filed as the directors of the company, who proclaimed that they were buying the Garfield, Sheldon,

Hickman, Western, Golden

Gate, and Tar Heel mines located in the Mayflower District of Graham County, Arizona Territory (somewhat near Clifton) from a group of miners headed by Sheldon. Several of these men had certainly been in Arizona for some time prospecting. McMillan and Sheldon have their names associated with other mines

Researching this company represented many new challenges. Records of companies in New Orleans and Louisiana as a whole are kept in a very different manner from western record keeping systems. They are not kept at Recorder's or Assessor's offices as is the norm here in the west. First we had to find the index for the companies which are kept in the Parish Mortgage office at the City Clerk's office. Once the index has been consulted, then the files of the Notary (not the company) must be consulted, which were turned over to Archives and kept in a different office. Not all volumes are still in existence because of the Civil War. (Blake, 1860, McGowan & Hildt, Hutton and others in Wheat, 1861, Vol. 4)[with help from Monte Ragland in Baton Rouge and New Orleans]. This is one of the very few verifiable pre-1860 Arizona mining stocks signed during the period. Est. \$250-500



Lot #577 is the same style of certificate.

577. Graham. Mayflower. Gila River Mining Co. of New Orleans, Louisiana. Incorporated in New Orleans, Louisiana, circa 1859. Unissued. "New Mexico and Arizona" at left. Printed by H. Whermann, New Orleans. Black border and print on vanilla paper. Dated New Orleans. 7 x 10. Same as the above but unsigned. Est. \$200-400

578. Graham. Morenci. Arizona-Morenci Copper Co. Incorporated in Arizona. Issued to Albert Lyndel for 60 shares, cert #48, in 1909. Signed by James B. McNery president and H. Rittman secretary. Vignette of an industrial mill. Orange border and underprint. Uncancelled. Printer - New York Bank Note. 8 x 12. Owned 37 claims in the Greenlee (Gold Mountain) district which was reported carry 3% copper. By 1912, the company deeded back its property to the original owners, the Arizona Celtic Copper Co. (Copper Handbook, 1912, p.79; Mines Handbook, 1916, p.166-67). Foxing along edges. Very fine. Est. \$25-75



579. Graham. Morenci. Gold Cliff Mining & Reduction Co. Issued to Stephen Parrish for 2000 shares, cert #134, in 1897. Signed by Leopold Balbach, and others. Vignette of a spread winged eagle atop crag. Black border with orange safety print. Uncancelled. Printer - W. E. Badeau. 8 x 11. Dated *New York*. This company was listed in the 1904 Obsolete Securities as having mines in Arizona. No other reference to this company was located within our library. There was a Gold Cliff M&MC located in Graham Co and a Gold Cliff MC, but no exact match. We have decided to place it in Graham County, Greenlee district. Minor wear to folds. Very fine. Est. \$25-75

580. Graham. Morenci. Markeen Copper Co. Incorporated in West Virginia. Issued to Eugene G. West for 20 shares, cert #193, in 1899. Signed by Thomas A. Lee president and R. Horton Batchelor secretary. Vignette of seated woman with fancy headdress. Green border and safety print. Uncancelled. Printer not noted. 8x 12. Dated *Boston, Mass.* Owned 370 acres in the Greenlee district. Ore was of low grade argentiferous and auriferous chalcopryite. "Advertised extensively and sold much stock, but neglected to do the \$1800 worth of annual assessment work required to hold its lands, hence same were 'jumped' Jan 1, 1903." (Copper Handbook, 1904, p.485). Printing is crooked due to printing error. Wrinkles at upper left. Very fine. Est. \$50-150



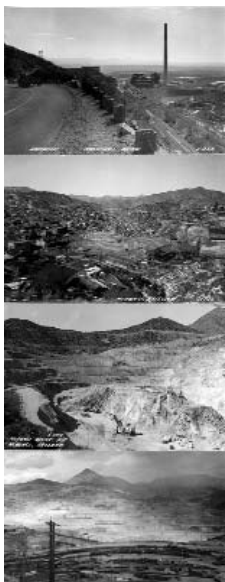
580.5 Graham. Morenci. Markeen Copper Co. Incorporated in West Virginia. Issued to L. Whitney Searle for 100 shares, cert #A523, in 1901. Signed by Thomas A. Lee president and Thos. G. Warman secretary. Vignette three miners operating drills underground. Orange border and underprint. Uncancelled. Printer - ABN. 7 x 12. See lot above for the story. Very fine. Est. \$25-75

581. Graham. Morenci. Mining Claim Map and a Notice of Good Standing, 1901. Lot of two pieces. The claim map shows the location of the mining claims in relation to the San Francisco River, and the mill site. There are pencil lines possibly showing the vein locations. The map is in color. There are folds and some light stains. Size 15 X 16 1/2". Notice of good standing lists the owner's name. The names of the claims, where the claims are located, the size of the claims, and states that the assessment work is completed. This notice was notarized in Vernon County, Missouri, in 1901. Lindgren in *The Copper Deposits of the Clifton-Morenci district, Arizona*; USGS Paper No. 43, 1905, states that the Weaver claims are prospects located high up on the slope of Copper King Mountain, between the summit and the San Francisco River. The elevation of these claims is 5,200 feet. At this time there were only two claims listed; the Gray Cliff and the Good Luck, which are developed by two tunnels. The vein of ore occurs as black sulphide and green stain in the mass of the porphyry. Est. \$50-150



582. Graham. Morenci. Morenci Copper Co. Incorporated in West Virginia. Issued to E. T. Howe for 200 shares, cert #599, in 1901. Signed by Stephen Panish president and Geo. M. Penny secretary. Vignette of a seated woman with an American flag and eagle. Black border with gold underprint. Uncancelled. Printer not noted. 8x 11. One 25 cent documentary stamp affixed at upper left. Morenci Copper was a reorganization of Gold Cliff M&MC, which was a reorganization of Arizona Gold M&MC. Owned sundry claims in the Morenci district with a 150 foot shaft that assayed at 6% copper. Presumed dead 1905. (Copper Handbook, 1905, p.580). Very fine. Est. \$50-150

583. Graham. Morenci. Morenci Copper Co. Incorporated in West Virginia 1899. Issued to J. Edwards for 100 shares, cert #13, in 1899. Signed by Jas. McCoy president and Geo H. Rache treasurer. Vignette at upper left of two beehives. Black border with red and brown underprint. Uncancelled. Printer not noted. 8 x 11. Attached 1 inch by 3 inch paper indicating that this certificate is to be exchanged for a regular engraved certificate when ready. Two hole punches at left edge. Small stain at lower left corner outside border. Certificate is crooked on paper due printing error. See lot above for the story. Very fine. Est. \$50-150



584. Graham. Morenci. Morenci Mine Real Photopostcards c. 1935. Lot of 4. The first card shows an overview of the pit and benches on a cloudy day captioned "Morenci Open Pit Mine, Morenci, Arizona J 64". The second card shows the town of Morenci captioned "Morenci, Arizona C-176. Third shows a more detailed part of the pit if early stages of development captioned "Morenci Open Pit Morenci, Arizona C-554". The last card shows a view of the smelter and stack as seen from a roadway on a hillside captioned "Smelter, Morenci, Arizona E-362". The Morenci Pit went on to acquire the title of largest pit in the world, which is given to the gold copper mine in New Guinea. The mine is still active and moving 1 million tons of rock per day. All unused. The views are all crisp and bright. And all are in extremely fine condition. Est. \$50-150

585. Graham. Morenci. Phelps Dodge Corp. Incorporated in New York 1885. Issued to Charles W. Allen for 10 Cochise. shares, cert #08318, in 1929. Signed by Walter Douglas president and A. T. Thomson secretary. Vignette of a single miner operating a drill. Black border and underprint. Cancelled by several hole punches. Printer - ABN. 7 x 11. Phelps Dodge began in 1885 as the Copper Queen Cons Mining Co. In 1917, Phelps Dodge Corp assumed all liabilities of the holding company of Phelps Dodge & Co which held the Copper Queen Cons MC, Detroit Copper MC, Burro Mountain Copper Co, Stag Canyon Fuel Co, the Phelps Dodge Mercantile Co. and the Phelps Dodge & Co Inc giving control to a single company. The corporation also had substantial interest in the Moctezuma Copper Co and Bunker Hill Mines Co. Phelps Dodge & Co had been in business for nearly 100 years, its founder, Wm Earl Dodge, having been one of the great pioneer merchants of America and a noted philanthropist. In the early 1930's, negotiations had begun with Calumet & Arizona MC to merge with Phelps Dodge. The merger took place creating the mighty Phelps Dodge of present day which is still actively mining the gigantic Morenci open pit copper mine. The production of the company was outstanding. In 1916, the company produced 152 million pounds with that number growing to 220 million pounds of copper in 1929. If the copper values are impressive enough, in 1929, the company also produced 1.2 million ounces of silver, 40,000 ounces of gold and 2 million pounds of lead which lead to a gross income in 1929 of over \$40 million. The dividends alone that year were \$5.75 million with a net profit of \$3.8 million. To further illustrate the success for this company yet to come, in 1929, the reported ore reserves exceeded 240 million tons at average of 1.8% copper. (Mines Handbook, 1931, p.153-172). Very fine. Est. \$25-75



Cert #586 is this style as well.

586. Graham. Morenci. Phelps Dodge Corporation. Incorporated in New York in 1885. Lot of 3 different certificates: Certificate nos. 132656, 142892, 0141819 issued to Eddy & Co. for 100 shares in 1941, to Fidelity and Casualty Company of New York for 100 shares in 1942, and to Richard H. Tatlow 3rd & Mrs. Annette Hart Tatlow, as joint tenants for 70 shares in 1943, respectively. Signed by Louis S. Cates, president and Geo. R. Drysdale, secretary. First and second have orange border, third has black border. All with vignette of underground miner with early down hole drill, cancelled, 8 x 11, first is VF condition with cancellation punches and creases, second and third are VF condition with cancellation punches. Est. \$25-75



Partial. Certs in Lots #588 #589 are this style as well.

587. Graham. Morenci. Phelps Dodge Corporation. Incorporated in New York in 1885. Lot of 3 different certificates: Certificate nos. A95286, CO35462, and U3593, issued to Clark Dodge & Co. for 100 shares in 1954, to Carson & Co. for 100 shares in 1956, to A.G. Becker & Co. Incorporated for 40 shares in 1966, and to Baker Weeks & Co. for 1,000 shares in 1966, respectively. Signed by Robert G. Page, president and John E. Master, secretary. First with blue border, second with green border, third with brown border, all with vignette of panorama of Morenci pit, mill, and smelter with seated statue of man with map and pencil, cancelled, 8 x 11, Excellent to VF condition with cancellation punches, and minor folds and creases. Est. \$25-75

588. Graham. Morenci. Phelps Dodge Corporation. Incorporated in New York in 1885. Lot of 3 different certificates: Certificate nos. A012546, B29071, and C17402, issued to Leona W. Bickel for 40 shares in 1952, to Carson & Co. for 100 shares in 1956, to A.G. Becker & Co. Incorporated for 40 shares in 1966, to Baker Weeks & Co. for 1,000 shares in 1966, and to Dime Savings Bank of Brooklyn, respectively. Signed by Robert G. Page, president and John E. Master, secretary. First with green border, second and third with blue borders, all with vignette of panorama of Morenci pit, mill, and smelter with seated statue of man with map and pencil, cancelled, 8 x 11, Excellent to VF condition with cancellation punches. Est. \$25-75

589. Graham. Morenci. Phelps Dodge Corporation. Incorporated in New York in 1885. Lot of 3 different certificates: Certificate nos. B035718, C84261, and D1499, issued to Granger & Co. for 5 shares in 1960, to Eastman Dillon Union Securities & Co. for 100 shares in 1966, and to Thomas J. Jones for 100 shares in 1967, respectively. Signed by Robert G. Page, president and John E. Master, secretary. First with green border, second and third with blue borders, all with vignette of panorama of Morenci pit, mill, and smelter with seated statue of man with map and pencil, cancelled, 8 x 11, Excellent to VF condition with cancellation punches. Est. \$25-75

590. Graham. Morenci. Polaris Mining & Milling Co. Incorporated in Territory of Arizona. Issued to John R. Cassel for 100 shares, cert #1118, in 1905. Signed by L. F. Sweeting president and secretary J. A. Micalls. Vignette at upper left of miners working underground with smaller vignettes at each corner of a miner. Black border with bronze seal and safety print. Uncancelled. Printer - Goes. 8 x 11. Owned 40 claims that had four shafts and two tunnels. The ore assayed at 3% copper, 4 to 15 ounces silver and \$4 to \$15 gold. The property was under lease to the Southwestern Dev & Improvement Co from 1908-1912. (Copper Handbook, 1908, p.1133-34). Tears along fold creases. Very fine. Est. \$25-75



591. Graham. Morenci. Scenes of Morenci, Arizona, The Copper City, c. 1915. Published by the Phelps Dodge Mercantile Store, Morenci, Arizona. Eleven (11) black and white photographs. 4 x 6. Chips in front cover. Original binding string replaced with modern metal clip. Very fine. Est. \$100-200

592. Graham. Morenci. Shannon Copper Co Annual Report 1911. The Annual Report is 13 pages with tears on side upper binding. Very fine Est. \$50-150

COMPARATIVE TRUCK ACCOUNT	
Balance forward	\$1,000.00
Trucks	2,500.00
Repairs	1,500.00
Gas	500.00
Oil	1,000.00
Other	1,000.00
Total	\$7,500.00

593. Graham. Morenci. Shannon Copper Co. Lot of 2 certificates. Incorporated in Delaware 1899. One is issued to Josephine B. Foster for 100 shares, cert #A16082, in 1910. The other is issued to Edward Gagel for 100 shares, cert #A23733, in 1928. Both signed by different officers. Vignette of several miners shoveling ore into ore cars. Orange border and underprint. Rubber stamp on each suggests that the certificates have been cancelled. Printer - ABN. 7 x 11. Dated *Boston, Mass.* In 1905, the company employed 500 men and owned 43 claims in the Greenlee district. There were several mines with numerous tunnels. The ore assayed with strong values. Production in 1904 was nearly 12 million pounds copper. By 1931, the Shannon Copper Co had to sell off the subsidiaries of Arizona Copper Co and the Coronado MC. The Leonard Copper Co was liquidated in 1923 with its property, the Copper Belle, was transferred to the Shannon. The Copper Belle was located in the Turquoise district, Coshise. It also owned the Yaeger Canyon mine near Jerome. "A novel and ingenious experiment was tried on the low-grade ore reserves at the Copper Belle mine. In mid 1924, all timbers from the shaft were removed down to the 400' level, the shaft being closed at that point. The ore was then set afire and the top of the shaft and other openings were bulkheaded and a 100' stack was erected over the shaft to carry away all sulphur fumes. After burning for about for about 18 months the mine was flooded and the fire extinguished in early 1926. At last accounts the mine was being unwatered but the actual success or failure of thus roasting and leaching ore in situ has not been reported." The Shannon Copper Co also owned outright the Shannon Arizona Railway Co. (Copper Handbook, 1931, p.412-413). Both very fine. Est. \$50-100

The certificate in Lot #594 is this style.

594. Graham. Morenci. Shannon Copper Co. Incorporated in Delaware 1899. Issued to Joseph Carey for 50 shares, cert #63234, in 1932. Signed by officers. Vignette of several miners working underground. Purple border and underprint. Uncancelled. Printer ABN. Certificate has black stains at right edge. Size 7 x 11 Very fine. Est. \$50-100

595. Graham. Pima. Union Copper Smelter Co. Incorporated in Territory of Arizona. **\$100 Bond.** Signed by W. H. Brothers president and A. T. Van Vlackenburgh secretary. Vignette of four miners working underground. Uncancelled. Printer - Heincke-Feigel Litho, St. Louis. 11 x 14. Two of the original 40 coupons cashed in. A third coupon is included but detached. The listing for this company is short but very poignant. "Property was an imaginary smelter, devised to reduce ores from imaginary mines." This company was devised by Wm F. Wernse of St. Louis. He also ran a fraud at the same time with a company named Union Copper Smelting Co. Both of these companies were supposedly located at Pima, Graham County. (Copper Handbook, 1910, p.1719). One 5 cent documentary stamp affixed on corporate seal. Extremely fine. Est. \$50-150



596. Graham. Pima. Union Copper Smelter Co. Incorporated in Territory of Arizona. Issued to J. D. Mansfield for 5 shares, cert #163, in 1902. Signed by W. H. Brothers president and A. T. Van Vlackenburgh secretary. Vignette of four miners working underground. Green border and with COMMON in blue underprint. Uncancelled. Printer not noted. 8 x 11. See lot above for the story. Tight left edge is from the printer as the perforations are very visible. Very fine. Est. \$50-100



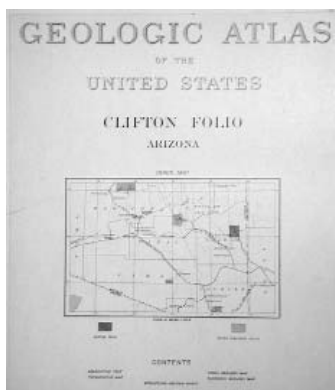
597. Graham. Safford. Safford Drug Co. Billheads. Lot of 2. The first is dated 1898, addressed to a John Blake & Co. for clothing. The other is dated 1898, addressed to M.S. Master, for "Medicine during sickness." Both are damaged by folds and tears. Safford was colonized by Gila settlers in 1872. The town was named so after Governor Anson Pacey Killen Safford (Ref: Arizona Place Names, p.373). 7" x 9". Est. \$25-75

598. Graham. Safford. Vi King Gold Mining Co. Incorporated in Territory of Arizona 1906. Issued to Anna E. Rust for 1800 shares, cert #97, in 1908. Signed by W. M. Fleming president and Charles E. Ford secretary. Vignette at upper left of two miners working underground. Gold border, seal and safety print. Uncancelled. Printer - Goes. 8 x 11. We could find no reference to this company within our library. Garbani places it at Safford. Minor wear to folds. Very fine. Est. \$25-50



599. Graham. Safford. Viking Gold Mining Co. Incorporated in Arizona 1904. Issued to A. J. Lutz for 100 shares, cert #902, in 1906. Signed by G. E. Bergstrom president and Wm. F. Jensen secretary. Vignette of a mill next to a stream within a valley with two smaller vignettes of miners inspecting ore. Uncancelled. Printer - Goes. 8 x 11. We could find no reference to this company within our library. Garbani places it in Safford. Extremely fine. Est. \$25-75

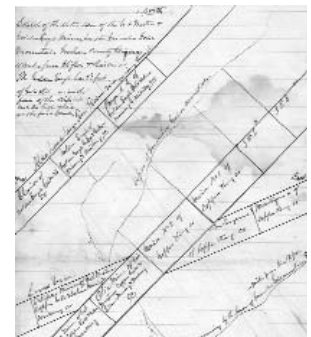
600. Graham. San Juan. San Juan Gold Mining Co. Incorporated in Territory of Arizona 1903. Issued to L. A. Grant for 500 shares, cert #62, in 1903. Signed by Brandenburg treasurer and John M. Ostrander vice president. Vignette of a seated Indian. Brown border with gilt seal. Uncancelled. Printer - Adams & Grace, New York. 8 x 12. We could find no reference to this company within our library. The Arizona Bureau of Mines (1985) lists three San Juan mines, in Graham, Santa Cruz and Yavapai Counties. District from Garbani 2001. Very fine. Est. \$50-100



GREENLEE

601. Greenlee. Clifton. Geologic Atlas of the United States, Clifton Folio, Arizona. This folio deals with the topography, water supplies, etc., of the Clifton Quadrangle. It has three topo maps at the end. 13 pages of text. Blue and black print on heavy white paper with a black binding. Circa 1905. Some smudges on the cover. Size 18" x 22". Fine. Est. \$50-150

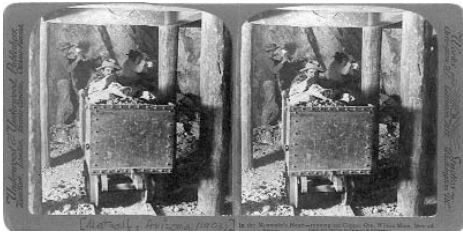
602. Greenlee. Clifton. Golden Eagle G&SMC, (Two documents) incorporated in Maine c1894, stock certificate issued to the heirs of J. R. Bodwell for 6975 shares, cert no. 93, signed by A. C. Higgins as president and S. Nillis Whitcomb as secretary. Gold seal (oxidized). Vignette of bald eagle holding US flag. "location of mine Clifton district, Graham Co., Arizona Territory" Uncancelled. 8 x 11". No printer, datelined Bangor,



Maine. The second document is a legal size handwritten report in the handwriting of **William Phipps Blake**, outstanding mining engineer of the period who spent considerable time in Arizona. Written reports of his have surfaced from time to time, and we had one from Morenci in the Filer I sale. Others can be seen in some of the Arizona references of the region. Blake's report is a sketch map of various mining company mining claims and relative topographic features. Along one side he notes that the "Golden Eagle has 3.5 feet of gold and silver ore exposed in the face of the drift but not so high grade as the first struck." The company owned three contiguous claims along the golden Eagle vein. An adjacent claim group was held by the great Western Copper, Gold & Silver M&MC, along with property held by the Copper King MC. Most of the document deals with the Great Western Co. Lindgren, in his paper on the Clifton, Morenci District, said that the Golden Eagle property was developed in 1902 by the Polaris MC (1905, p363) Ex rare. Est. \$400-800



603. Greenlee. Duncan. **Greenlee County Fair**, 3rd Place Ribbon, 1926. 2 x 7. Third Premium in the Discus Event. Gold lettering on light beige colored silk cloth. Extremely fine. Est. \$25-50



604. Greenlee. Metcalf. **Wilson Mine Stereophoto of Underground Miners, 1903**, by Underwood & Underwood. Image size 3.25 x 3.25". Image quality very high with excellent contrast. No scratches or discoloration. There is a raised line between the two photographs with a corresponding piece of tape on the back, a possible fold, though the images are unaffected. No catalog number printed on the photo. The view shows three miners: two swinging single jacks in ore face, other pushing ore car full of rock. Timbered ground support visible all around. Metcalf is about 8 miles from Clifton. The Wilson is not listed by Tenney or Lindgren, and may have been one of the Arizona Copper or Shannon Copper Company's mines. Est. \$75-150

MARICOPA



605. Maricopa. Aguila. **Nellie Meda Gold Mines**. Cert. #B113. Incorporated in Arizona. Issued to Michael A. Hamway for 20 shares in 1936. Signed by president Goughton (?) and secretary J. Harris. Uncancelled. No vignette. Light blue border and background. Printed by Broun-Green Co. 7 3/4" x 11 1/2". This company was operating in the Aguila district. (Garbani 2001). Xf, minor tears at folds. Est. \$25-50

606. Maricopa. Black Rock. White Picacho. **Monarch Mining & Smelting Co.** Certificate #1951. Inc. in AZ, 1904. Issued to Mrs. Rebecca G. Abel for 105 shares in 1911. Signed by pres. Jas. T. Ross and sec. E.R. Dozier. Uncancelled. Lands were known as the Ryland, or Three Black Buttes group. Diorite and schist carried copper, silver and gold ores, the latter valued at \$3 to \$15 per ton. Noted by Steven, a high figure of 1,000,000 tons of ore was estimated by management at 540' levels (Ref: 1910-11, p.1198). Vignette of bald eagle perched atop dome. Black border and gilt seal. Goes-printers. Prospectus is 4 pages, including map and property description. Both 8" x 10 3/4". Certificate is vf, with folds, and prospectus is fine, with tears at folds. Est. \$25-50



607. Maricopa. Black Rock. **Monarch Mining & Smelting Co Prospectus, C.1911**. 4p publication, includes map and property description. 8" x 10 3/4". Fine, tears at folds. See above lot for story. Est. \$50-150

608. Maricopa. Blue Tank. **Sahuraro Mining Inc.** Cert. #36. Inc. in AZ, 1952. Issued to Glenn D. Baubaker for 5 shares in 1952. Printed signature of president Roy A. Bonita and original signature by secretary Travis Herhausen. Vignette of road leading to mining camp on hilltop, flanked by two smaller vignettes of underground mining scenes. Gilt border and seal. Printed by Goes. The certificate appears to have been crudely mounted by way of tape at each side. As a result, the top layer was removed at each of these points. 1/2" tear at left edge, otherwise, fine. 8 1/4" x 10 1/2". Not listed in any of our sources. Est. \$25-50



609. Maricopa. Buckeye. **Buckeye Irrigation Company**. Offices at Buckeye, Maricopa County, Arizona. Inc. in AZ, March 20, 1907. #259 issued to the Flower Pot Cattle Company for 80 shares in 1911. Signed by president L. H. Thayer and secretary Walter H. Haugh. No printer or seal. No vignette. Uncancelled. Folds and torn on the right edge. "Capital Stock, \$160,000, 16,000 Shares. Par Value, \$10.00" printed on the left side. Black lined border with black print on white paper. Size 5 1/2 X 9" Barnes (1988, p. 65) reports that the town of Buckeye is a farming settlement on the Buckeye canal about 3 miles from the north bank of Gila, and 30 miles southwest of Phoenix with an elevation of 886 feet. The town was originally named Sidney, but was changed to Buckeye by C. M. Clanton, "because most of the early settlers came from Ohio." (the Buckeye State) Buckey O'Neill was once interested in this canal, but it was not named for him although sometimes it is said to have been. The post office at Buckeye was established in 1888. Lawrence Hawthorne Thayer was a physician, receiving his degree in 1900 in Ohio. He was Chief of Staff of the Good Samaritan Hospital in Phoenix and had offices in both Phoenix and Buckeye. He was also president of the Buckeye Valley Bank. This irrigation company was formed to bring water to help cultivate farmlands in Buckeye, of which Thayer was a prominent land owner. [ref: Arizona Biographical, v4, pp38-9] Ex Rare. Est. \$150-300