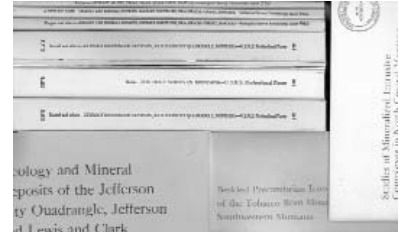


**MONTANA**

**672.** Montana. Geology. **Montana Geologic Publications, 1918-1970's.** Lot of 10 different volumes. Each volume is a USGS Professional Paper. Prof Paper 1031: *Medicine Lodge Thrust System, East Central Idaho and Southwest Montana.* Prof Paper 428: *Geology & Mineral Deposits of the Jefferson City Quadrangle, Jefferson and Lewis & Clark Counties,* includes to map folios. Prof Paper 346: *The Belt Series in Montana,* includes map folio Prof Paper 1187: *Bedded Precambrian Iron Deposits of the Tobacco Root Mountains, Southwestern Montana.* Prof Paper 1301: *Studies of Mineralized Intrusive Complexes in North Central Montana.* Prof Paper 370: *Geology of the Three Forks Quadrangle Montana.* Prof Paper 665: *Geology and Mineral Deposits, Elkhorn Mountains, Broadwater County.* All are soft bound, ranging from 16 to 122 pages. A nice addition to a Montana reference library. All Vf, some damage at binding. \$100



**673.** Montana. Jefferson. Corbin. **Robert Emmet Copper Co, 1908.** Prospectus. Located on the cusp of the Butte mining district, the company consisted of 5 claims over 80 acres. Ore average totals were in excess of \$79, including silver, gold, copper and lead. Includes an application for stock subscription, and an envelope in which all the pieces came. New York Postmarked. 9 1/2" x 12". Fine to Vf, with foxing to one of the prospectuses. \$50

**674.** Montana. Lewis & Clark. Helena. **Penn-Yan Mining Co.** Lot of 2. Cert.#122, 221. Incorporated in Montana. One is issued to J.L. Buskett for 2500 shares in 1891. The other is unissued. Uncancelled. Both are signed by president Henry H. Hill. Vignette of nine gold and silver coins in full color with varied values. Gilt



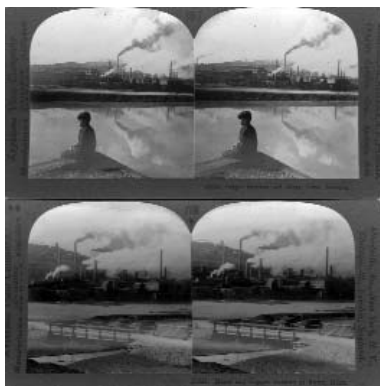
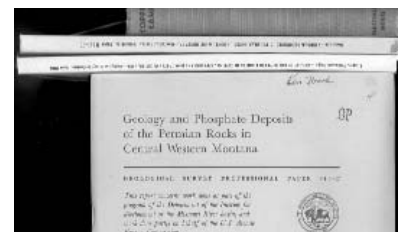
and silver vignette, burgundy border and underprint. Wonderful vignette of America's classic coinage. , showing the full variety of gold coins (\$2.5, \$5, \$10, \$20 with the obverse and reverse of each). Dated Helena, thus we suspect one of the many gold properties near there. Printed by Pioneer Press. 9" x 11". The issued certificate is Vf, stains at left margin. The unissued certificate is XF. \$300



**675.** Montana. Lewis & Clark. Helena. **US Assay Office Bullion Deposit Memorandum. Assay at Helena, MT, 1905, for the Emigrant Gulch Cons. Placer Mines Co.** \$212.06 worth of gold. 5" x 12". Vf, folds, small wear tear at center of fold. \$120

**676.** Montana. Mining. **Montana Related Mining & Geology Publications.** Lot of 4 different volumes. Copper Camp, by

Compiled by Workers of the Writers' Program in 1943. Published by Hastings House. Hard bound, with some photos and illustrations. 308 pages. Geology of the Southern Elkhorn Mountains Jefferson and Broadwater Counties, MT, Prof. Paper 292, by M.R. Klepper. 82 pages including maps. Mineral Resources of Southwest MT, Prof. Paper 313-E, by Roger Swanson, 1970. 116 pages, including maps. Geology and Phosphate Deposits of the Permian Rocks in Central Western Montana, Prof. Paper 313-F, by R. Swanson, 1973. All are Vf, with minor wear to covers, and some foxing on pages. \$50



**677.** Montana. Silver Bow. Butte. **Anaconda Co. Mines & Copper Smelter at Butte Stereocard Views.** Lot of 2 pcs. The first is a view of just the mines and smelter, the second taken from a distance, featuring a young man seating in the foreground. Both have descriptive narratives on reverse. Xf, high contrast. \$50

**678.** Montana. Silver Bow. Butte. **Britannia Mining Co, c.1902.** Prospectus, 4 pages. Consisted of one patented claim over 13 acres, showing 6 veins, of which 3 parallel veins were developed by 100, 150 and 400 foot shafts, with a total of 5000' of underground openings. Ore averages were about \$35 per ton, mainly in silver. Many levels in mine were leased to other tributors (Ref: Copper Hdbk, 1905, p.257). 8.5 x 11", 3 pages, with circular map of district on back. Blue pencil and ink writing, but otherwise Vf. \$75



679. Montana. Silver Bow. Butte. **Columbia Gardens, Butte, MT Photopostcard, c. 1910.**  
Postmarked Three Forks, Mont, 1919. Very fine. \$20



680. Montana. Silver Bow. Butte. **Original Butte Mining Co. Cert.#327.** Incorporated in New York in 1881. Issued to Marcus Daly for 200 shares in 1882. Signed by president T. M. Dunfee, secretary Geo. B. Child and treasurer Chas. S. Miller. **Signed on back by Marcus Daly.** This is a rare autograph. Black border and print. Location of Mine: Butte, Montana printed on certificate. Marcus Daly was George Hearst's manager in Montana. He was perhaps the first in America to suggest mining higher tonnage and lower grade. He was responsible for the mining of the great Butte ore deposits. He made millions of dollars for Hearst, himself and the shareholders. Daly was also one

of the leaders in fighting the cessation of using silver and gold in coinage and was a debating adversary of W. A. Clark. Original Butte owned the Original mine, which was a copper mine located in the center of Butte, and was said to have been worked by the Indians. It was named the Original mine because it was the first quartz lode to be found in the district. W.A. Clark bought the Original mine in 1873 and it was probably the first Butte mine to produce copper ore in commercial quantities. In those days, since no successful method of extracting copper from ore had been found in the United States, the copper ore was shipped all the way to Swansea, Wales, Great Britain, which at the time was the copper smelting capital of the world. (Marcosson, 1957, pp84, 140, 142; Weed, USGS Prof. Paper 74, p133; W.P.A, 1943, p195) 7 x 11. Cancelled hole punches. Very fine. \$450