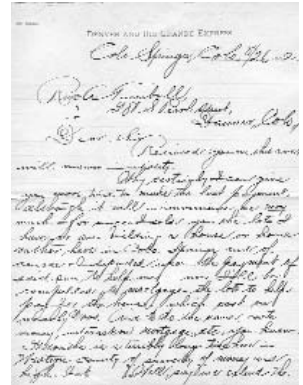


461. Colorado. U.S. Geological Survey of Colorado and New Mexico, by F.V. Hayden, 1869. This report covers Hayden's trip from Cheyenne, Wyoming Territory through Colorado and New Mexico. The first part of this book, by Hayden, discusses mainly the geology he encountered in his travels. The second part of the book is a report of Persifor Frazier, Jr. regarding Mines and Minerals of Colorado. Frazier reports: "Many knotty questions have presented themselves to the miners and smelters, among which, perhaps, the knottiest is the dressing of second-class ores and the proper form to which to bring the tailings before they are ready for the amalgamator or smelter. It is believed by many able miners, and the complaint is frequently made, that by the use of wet stamps and careless feeding, the mill-men waste unnecessarily a great deal of gold, and from this it is argued frequently, with less justice, that the use of wet stamps is pernicious and wasteful." The third section of this book is a report of Cyrus Thomas on the Agriculture of Colorado. 155 pp, hardbound cover, green with gilt lettering. The cover is worn and there are some holes along the side of the spine. There is much foxing throughout, but the binding is good and overall condition is fine. \$300

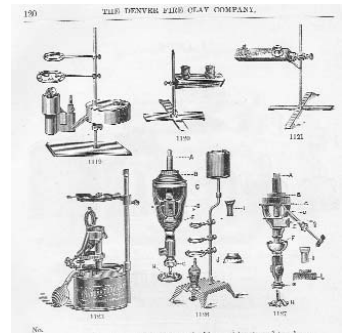


462. Colorado. Arapahoe. Denver. **Denver & Rio Grande Express Manuscript Letter, 1892.** Addressed to Rev. A. Turnbull of Denver from E.A. Hale of Colo., and is a response to Turnbull's request for late payment leniency. Hale's response is short of religious compassion, using guilt tactics to persuade the good Reverend to pay up. Very fine condition. 11 x 8". \$50



463. Colorado. Arapahoe. Denver. **Colorado Manufacturers Assn. Token, 1906.** COLORADO MANUFACTURERS ASSN. / DENVER / picture of Colorado State seal / (star) 1906 (star) // COMPLIMENTS OF DENVER MANUFACTURERS AND MERCHANTS / wreath border / KEEP / YOUR / MONEY / IN / COLORADO. Rd., br, b/b, 30mm. \$45

464. Colorado. Arapahoe. Denver. **Denver Fire Clay Co. Assay Catalog, 1898.** Contains reference tables, illustrations and prices for chemists' and assayers' lab supplies, chemical apparatus, physical apparatus, outfits, school sets, mineral collections, models, charts, scientific books, fire brick and clay, chemicals and more. Fabulous! Softbound, 280 pages inclusive of index, 6 1/2" x 10 1/4". Cover is worn, torn, stained, faded and folded. Chips from spine and rear cover. Fine. \$550



465. Colorado. Arapahoe. Denver. **Denver Real Photo Postcards, c.1940.** Lot of 3 different cards. All taken by Sanborn. One shows a "Scenic View", one shows Post Chapel #1 and the last shows the "West Gate, Fitzsimons (sic) General Hospital". Very fine. \$45

466. Colorado. Arapahoe. Denver. **Jackling Telegraph to Mudd, 1911.** Telegram from D. C. Jackling, the father of open pit mining, to Seeley Mudd regarding some proposition with the Bagdad, Arizona project that Mudd was looking for a partner with. Tear from upper left corner, file hole at center. Western Union Night Letter from Denver to Mudd in Los Angeles. "Bagdad" written in Mudd's hand at bottom. This telegram involves the famous Bagdad, Arizona copper deposit, which developed into a world-class mine. \$50

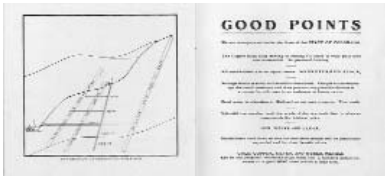


467. Colorado. Arapahoe. Denver. **Omaha & Grant Smelting & Refining Co Lettersheet, 1891.** At upper left is a vignette of the smelter at Omaha, Nebraska. At upper right is a vignette of the smelter at Denver. A typed note to the Hecla Cons MC in Montana. Very attractive. Very fine. \$30

468. Colorado. Arapahoe. Denver. **One of the great classic mining spoons!** This has a windlass at the top of the spoon as a moving part with silver chain mimicking a rope wrapped around the handle and connected to an ore bucket at top left of bowl. Artificial nugget at top right of bowl. Pick and shovel under windlass. The crank on the windlass works. "State Capitol, Denver, Colo" with picture of the capitol building engraved in bowl. Extremely rare. XF. 6". \$300

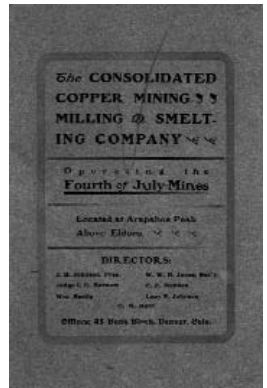


469. Colorado. Bent. Las Animas. Wilkie, Bartlett Farm Loan & Mortgage Co. Cert #2. Incorporated in Colorado. Issued to Joseph Bartlett for 10 shares in 1923. Signed by Joseph Bartlett president and Iris C. Marshall secretary. Vignette of a farm worker in an irrigated field. Dark brown border and underprint. Uncancelled. 8 x 11. Printer - RMBN Co. The company was located in Las Animas which is located in Bent County. Folds. Very fine. \$65



470. Colorado. Boulder. Gold Hill. Copper Rock Gold Mining & Milling Co, c.1900-1905. Prospectus, Colorado incorporation, Missouri promotion. 6.5 x 6", yellow cover, green print. Tear to front cover. Vertical center fold. 16pp. Center double truck photo of property. Pictorial with many photos by Smith-Hassel Co. of Denver. The property was in advanced prospecting stage with many good assays. \$100

471. Colorado. Boulder. Grand Island. Cons Copper Mining, Milling & Smelting Co, 1901. Prospectus. 8pp, 5.5 x 8", soft green cover, blue pencil on cover. "Operating the Fourth of July Mines". These folks were in the advanced prospecting stage only. There are few assays and no trial shipments, only testimonials. They compare themselves to Anaconda and Calumet & Hecla. Pure promotion, seemingly without merit. Colorado corporation. Surprisingly, Stevens, in the Copper Handbook 1905, gave them a good write-up. By then (1905), they actually had a mine, employing 20 men working in the mine that had 2500 feet of underground workings. This is why one must be careful not to call a company a scam unless charges were made and convictions obtained. When this prospectus was printed, it had all the appearances of a scam, but they were in the hopeful prospecting stage and got lucky. \$75



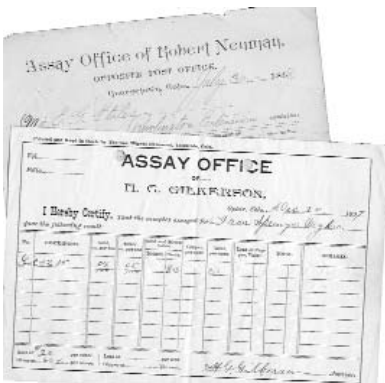
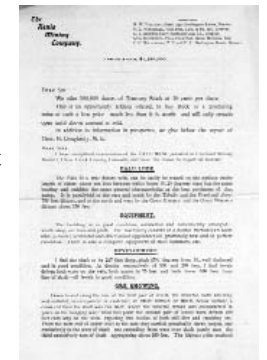
472. Colorado. Boulder. Unknown. Great Eastern Gold Mining Co. of Colorado, c.1900. Crude prospectus. Consisted of more than 1 1/2 miles of underground workings, with "more than one million of gold" having been removed from the 400' long vein. 2 page prospectus, not giving much more than a brief description of underground workings, vague assay information and some stock information. 8" x 11". Fine/Vf, foxing, some chipping and tearing along edges. Maine corporation. \$50

473. Colorado. Clear Creek. Berthoud Pass. Berthoud Pass Original Photographs, c.1940. Lot of 8 different photos. All were taken by Sanborn. All of the photos are views along the road over Berthoud Pass, including a shot of the summit and a shot of a ski run with skiers. These were probably test photos for future postcards. Extremely fine. \$25



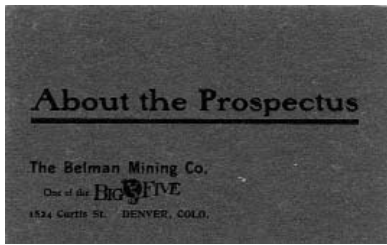
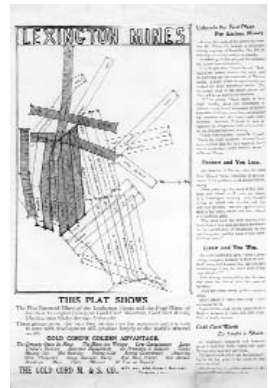
474. Colorado. Clear Creek. Empire. Empire Tunnel & Gold Mining Co, 1901. 1pp flyer Colorado corporation, 5 x 7", printed in blue. Held 33 claims on Covode Mountain and ten acres of placer. About 1000 feet of drifts. They intended to drive the main drift one mile, hoping to develop ores along the way. Some blue pencil underlining. Appears to have been attached to a second page, now gone. F-vf. \$50

475. Colorado. Clear Creek. Freeland. Xenia Mining Co, 1900. Propsectus. Owned the Falu mine that a hoist servicing the 250 foot shaft with gold and silver ore worth \$2-4 per ton, a true low grade ore deposit. Based on the assays, the company should have been pushing the copper values, which ran as high as 8% with values less than 4% not even mentioned. 3 pages, with a letterhead to Vigouroux dated 1900. Very fine. \$75



476. Colorado. Clear Creek. Georgetown. Georgetown & Ophir Assay Receipts, 1888 & 1897. Lot of 2 different pcs. One is from the "Assay Office of Robert Neuman, Georgetown, Colo, 1887". The receipt is for E. G. Stiles indicating a sample had 13 ounces silver with 15% lead. The second is from the "Assay Office of H.G. Gilkerson, Ophir, Colorado, 1897." The receipt is for Iron Springs Mining Co indicating a sample had minimal gold and silver, worth only 83 cents. This receipt was printed by San Miguel Democrat, Telluride, Colorado. Water stain on the Georgetown piece. Ophir receipt is very fine. \$45

477. Colorado. Clear Creek. Gold Dirt. **Gold Chord Mining & Smelting Co, c.1903.** 2 Broadsides. 11 x 17", pictorial, with photo of "Our new mill". Held properties at Kokomo and Idaho Springs, including the Lexington mine. Very good. Wear to edges. Second broadside is 9 x 12.5" with a claim map of the Lexington group on Lexington Canyon. \$75



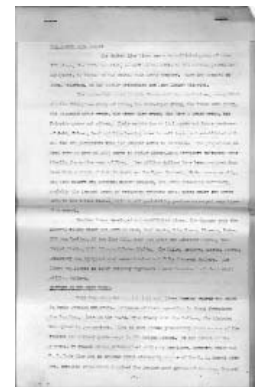
478. Colorado. Clear Creek. Idaho Springs (Gilson Gulch). **Belman Mining Co, c.1902.** Prospectus. Colorado promotion. 4.5 x 2.75", blue cover, 8pp, dead mint. The cover states that they were on e of "the Big Five" but they are not mentioned in the Big Five prospectus. They owned the Belman and German mines. Very speculative prospect. Not much info here except on the key players. Located near Gilson Gulch. \$75

479. Colorado. Clear Creek. Idaho Springs. **Cons Franklin Mines Co, c.1902.** Incorporated in Colorado, promoted from Davenport, Iowa. This is an advertising mailer printed on both sides of one 8 x 11" sheet. Property was located on Seaton Mountain, 2 miles from Idaho Springs and directly over the Newhouse Tunnel. There is claim that a 3000 foot tunnel exists already with 1300 feet of the tunnel was in paying ore. On the reverse side is a photograph, presumably of the Newhouse Tunnel, since there is a paragraph about the tunnel just below. Dings to edges. Very fine. \$50



480. Colorado. Custer or Saguache (not sure). Crestone. **Boston-Cleveland Mining & Milling Co, 1902.** Prospectus, 4pp, 8.5 x 14", New York promotion, Colorado incorporation. They owned three claims. A mining engineer's report is part of the 4pp. No tonnage outlined. Purely a prospect at this point. F-vf. \$75

481. Colorado. Dolores. Rico. **United Rico Mines Co, c.1903.** Prospectus. An in depth discussion of the organization of the United Rico Mines company who had rather well known Colorado financiers, including D. H. Moffat, Denver railroad magnate. The company was formed after 10 years of litigation that surrounded the properties at Rico, which were claimed to carry gold, silver, lead, zinc, copper and even uranium. The consolidation of over 200 claims took place in 1903. The parent company took control of machinery, buildings and any other property assets for a aggregate of over \$3 million. 8 pages of text, and 2 pages listing the properties and machinery included in the consolidation. Prospectus is in a legal document format, 8.5 x 13". Very fine. \$50



482. Colorado. El Paso. Colorado Springs. **City of Colorado Springs Bonds.** Lot of 4. Public Improvement Bond, cert #1, issued 1903. Vignette of Indian woman with Colorado State Seal. All original coupons attached. Green border and underprint. Paving and Improvement Bond, cert #2, issued in 1911. 3 coupons cashed in of original 20. Green border Public Improvement Bond, cert #11, issued 1918. 1 coupon cashed in of original 20. Brown border. Public Improvement Bond, cert #18, issued 1916. 5 coupons cashed in of original 20. Brown border and underprint. All are signed by the Mayor. All are cancelled by hole punches. All or 11 X 14. Fine. \$100

483. Colorado. El Paso. Colorado Springs. **City of Colorado Springs Bonds, 1011 & 1921.** Lot of 2 pcs. Storm Sewer Bond, cert #33, issued 1921. 12 coupons cashed in of original 20. Brown border and underprint. Sanitary Sewer Bond, cert #11, issued in 1911. Vignette of a capitol building (Colorado Springs?). Green border. 26 coupons cashed in of original 30. Both are cancelled by hole punches. Signed by Mayor. Wear to folds. Fine. \$100



484. Colorado. El Paso. Colorado Springs. **City of Colorado Springs Bonds, 1901 & 1903.** Lot of 2 pcs. City Hall Bond, cert #2, issued in 1903. Vignette at upper right of allegorical woman in clouds. Green border. 22 coupons cashed in of original 30. Cancelled by hole punches of same. Signed by Harris Mayor. City Hall Bond, cert #11, issued in 1901. Vignette of Indian woman with Colorado State Seal. Red border and underprint. 20 coupons cashed in of original 30. Cancelled by hole punches of same. Signed by Robinson Mayor. Wear to folds. Fine. \$100

485. Colorado. El Paso. Colorado Springs. Colorado Springs Area Real Photo Postcards, c.1940. Lot of 6 different cards. All taken by Sanborn, all with numbers. Various views of Colorado Springs sites. Very fine. \$50



486. Colorado. El Paso. Colorado Springs. Will Roger's Castle Photo Postcard, c.1940. Photo by Sanborn. Card captioned "Will Rogers Shrine of the Sun, Broadmoor, Cheyenne Mt Highway". S-958. Very fine. \$17

487. Colorado. El Paso. Manitou Springs. Bank of Manitou. Lot of 3 certificates. Incorporated in Colorado in 1907. Issued to C.H. Austin for 4 shares in 1914, cert #9, issued to H. M. Ogilbee for 10 shares in 1934, cert #4 and issued to Reconstruction Finance Corp. for 10 shares in 1934, cert #21. All signed. One has orange border, second has brown border and third has green border with vignette at upper left of antlered elk. All cancelled. 8 x 11. Printer - Goes. Stubs attached at left. Very fine. \$100



488. Colorado. El Paso. Manitou. J. J. Conway \$5 Gold Restrike. Pikes Peak / 5 / from orig. obv. Die // J.J. Conway / & Co (stars) / Bankers. B, rd,t/t, 21mm, unc. Second coin in "goldline", also unc. The third coin is missing. The missing coin would have been the silver restrike. Both in original Conway restrike Lucite holder. \$200

489. Colorado. Fremont. Canon City. Hunter Palmer Medicine Bottle. Hunter Palmer / City Drug Store / Canon City, Colo. 3ii bottle, approx 2 oz. Clear, no chips. Canon City is located about 35 miles southwest of Colorado Springs. It is considered a resort town in a mining district. 4.5" tall. \$60



490. Colorado. Fremont. Florence. James A. McCandless Investment Co. Cert #9. Incorporated in Colorado. Issued to Joan Elizabeth Sutton for 234 shares in 1923. Florence, Colo. in corporate seal. Signed by Victor McCandless President and A. J. Kirk Secretary. Photo-vignette of James McCandless. Black border, gold seal and safety print. Uncancelled. 8 X 11. Printer - Goes/W. H. Kistler. James A. McCandless was an early settler who laid out this town site in 1872 after the Denver and Rio Grande Railway established Labran, a few miles distant. McCandless named the town Florence after his daughter. The town eventually outgrew Labran and became an important oil refining and ore reduction center (Benson, p. 70) Very fine. \$50

Postcards, c.1940. Lot of 2 different cards. Both taken by Sanborn, W-1372 and W-1301. Each shows a nice landscape shot near Rifle Mountain. \$12



491. Colorado. Garfield(?). Rifle. Rifle Mountain Real Photo Postcards, c.1940. Lot of 2 different cards. Both taken by Sanborn, W-1372 and W-1301. Each shows a nice landscape shot near Rifle Mountain. \$12

492. Colorado. General. Colorado Gold Mining & Smelting Co. Bond #3592. Incorporated in Colorado. First Mortgage Bond, issued 1902. Signed by C. C. Wendall president and Chas. Pecking secretary. Vignette of spread winged eagle clutching globe. Brown border and underprint. 9 coupons cashed-in of original 20 or 30?. 12 X 17. Printer - Denver Lith. No information found within our library concerning this company. Folds. Very fine. \$75



493. Colorado. General. Colorado Mountain Real Photo Postcards, c.1940. Lot of 6 different cards. Views include a burro, a pack train in the mountains, peach orchids, Ela Natural bridge and other shots. Photographers include Sanborn, Smith and an unknown artist. Very fine. \$15



494. Colorado. General. Colorado National Monument Real Photo Postcards, c.1940. Lot of 19 different cards. All taken by Sanborn. A collection of wonderful shots of the Colorado National Monument. Fabulous geologic and topographic features abound, like rock spires and mesas. My favorite is a shot of the Devil's Kitchen. Very fine. \$65

495. Colorado. General. **Million Dollar Highway Real Photo Postcards, c.1940.** Lot of 4 different cards. All taken by Sanborn. All show different views of the Million Dollar Highway. Very fine. \$20



496. Colorado. General. **Misc. Postcards of Colorado.** Lot of 6 pcs. The cards shows scenes of Almont, Ward, Loveland, Gilman & Eagle River Canon from Battle Mt. Highway, a miner's cabin in Boulder and a miner working a stoppe with a pneumatic drill. Very fine. \$45

497. Colorado. General. **Scenic Real Photo Postcards, c.1940.** Lot of 7 different cards. Shots include: Rio Grande River near Wagon Wheel Gap, Sangre de Cristo Range from the San Luis Valley, Lizard Head Peak and Lone Cone near Dolores. All taken by Sanborn. Very fine. \$22



498. Colorado. General. **Western Bronze Sculpture by Dan Garrett, 1990, #8/50.** Coyote skull and eagle feathers mounted on black marble, resting on an oak base. Mr. Garrett is a well-known, accomplished Colorado artist, having recently received attention in a feature article in "The Art of the West" magazine. Our search of Garrett's work on the internet led to a failed search for any of the pieces from this series, those among his earliest works. But we did find a number of other pieces at the \$3000-5500 range, the bulk of which were in the \$5000-5500 range. It is our understanding that it is possible that all 50 pieces were actually poured. \$1500

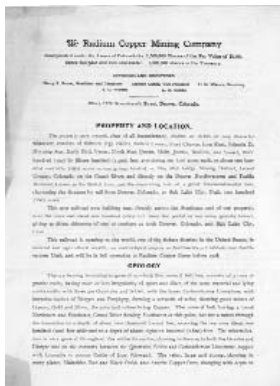
499. Colorado. General. **Wildlife Real Photo Postcards, c.1940.** Lot of 5 different cards. 4 of the 5 have Sanborn as photographs. K-778 shows "Friendly Deer". K-506 shows "Bull Elk". K-541 shows "Deer with Locked Antlers". A-17 shows big horn sheep. Unmarked card shows a bull elk. All very fine. \$20



500. Colorado. General. **Winter in Colorado Real Photo Postcards, c.1940.** Lot of 9 different cards. All taken by Sanborn and numbered individually. My favorite is card #X-905 that shows a very healthy coyote with the sun being filtered out by overcast sky. All attractive. \$60



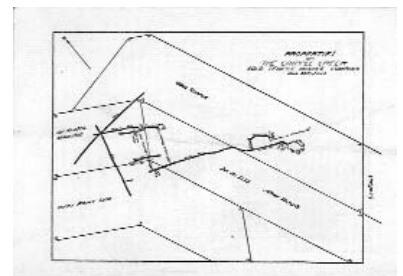
501. Colorado. Gilpin. Russell. **Luciana Transportation, Tunnel, Mining and Drainage Co, c.1902.** Prospectus. Mines in the Virginia and Lower Fall River districts as well, which creep over the county line into Clear Creek. 7 x 10.25" 51pps, missing the 2 standard maps that this piece should have. Printed by Gowdy-Simons Press. Beautiful cover with sketch of the Luciana, the "Greatest ship of the Cunard Line." Original thin red wax paper wraps also in excellent condition. String bound. The Luciana Tunnel was located about 0.5 miles up Fall River from Clear Creek on the west face of Bellevue Mountain. One of the full page photos is of the Luciana Tunnel, another of the town of Russell Gulch. Very fine. \$100



502. Colorado. Grand. Red Gorge. **Radium Copper Mining Co, 1907.** Prospectus. Incorporated in Colorado. Owned 13 claims in the Red Gorge district, Grand County. The Copper Handbook, 1910, p.1451, lists this company has having 5%-45% copper, with minor silver and gold. Promoted by Charles F. Potter & Co, Minneapolis. 4 pages, 8.5 x 11". Very fine. \$50



503. Colorado. Gunnison. Rocky Creek. **Cripple Creek Gold Temple Mining Co, c.1901.** Prospectus. 12 pp. 4.5 x 6.5" New York promotion. Colorado incorporation. They held no property in Cripple Creek but intended to buy some. They claim reserves of 23,500 tons that should profit \$10 per ton. Claim map on the back cover. VF. \$75

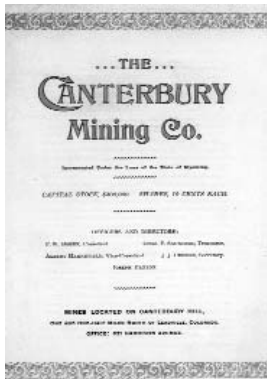


504. Colorado. Hinsdale. Galena. **Hancock Silver Mining Co.** Incorporated in New Jersey 1881. Unissued, 18xx, no cert #. Vignette of John Hancock. Mines located in Hinsdale County, Colorado printed on certificate. Black border and print. Hole punch on signature line. 7 X 11. Printer - Wolf & Co. Owned the Hancock lode on Engineer Mountain in the Galena district. Assays ran 28 oz/ton silver. There was one 50' shaft. (Corregan & Lingane, p.377) Very fine. \$40



505. Colorado. La Plata. Durango. **Durango Real Photo Postcards, c.1940.** Lot of 2 different cards. Both by Sanborn, #W-1835 and #W-1406. First card captioned "Durango and Animas River Valley, Colo." The other is "Electra Lake and Engineer Mt on the Million Dollar Highway between Silverton and Durango, Colo." Very fine. \$20

506. Colorado. La Plata. Needle Mountain. **Bullion Mountain Mining Co, c.1904.** Prospectus. New York promotion, Colorado incorporation. 8.5 x 14", 4pp. 14 miles south of Silverton.. Prospect with many veins that had some good assays. VF. \$75



507. Colorado. Lake. Leadville. **Canterbury Mining Co, c.1900.** Prospectus. 4pp, cover with gold leaf (gilt). Wyoming corporation, Leadville promotion. Some pencil underlining to contents. Promoted by Chas Saunders of Leadville. The prospectus is without significant content. Last page has a vignette of Saunders' business card. 6 x 9", f-vf. \$75

508. Colorado. Lake. Leadville. **Carl Nollenberger Billhead 1903.** Carl Nollenberger, Wines, Liquors and Cigars of Leadville. Sole Agent for Anheuser-Busch Brewing. Vignette of Anheuser-Busch Company logo. Very fine. \$25



509. Colorado. Lake. Leadville. **Davis Drug Co Medicine Bottle Set.** Lot of 6 different bottles. Each bottle is different. All are embossed with "Davis Drug Company. The Rexall Store. Leadville, Colo." The style of embossing is different on each. Are all rectangular. Sizes: 3", 3.75", 3.75", 4.25", 5", 5.5" tall. All clear with minor dirt within some. Extremely fine. \$120

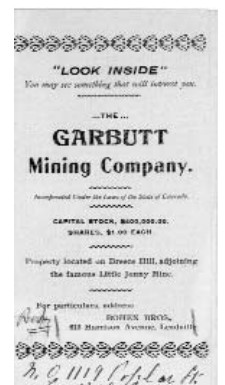
510. Colorado. Lake. Leadville. **Fryer Hill Mines Co, 1902.** Colorado corporation. Report of J. W. Newell and "Memoranda". New York Promotion. 4pp, 8 x 11". Newell's report of Dec. 26, 1902, states that the dewatering was

complete. They then had to remove 20,000 tons of sand and silt to free the drifts and make ready for exploration. They laid 25,000 feet of track and had about the same to go. This mine was a connection of several different mines, including the Bancokk, Shamus O'Brien, Jamie Lee and Duncan. It did not involve the Double Decker mine. Please note the similarity and thus confusion in company names, and see a similarly named company at Nevadaville in Gilpin County. The Memo is 4 x 9", 7pp, stapled at top. It gives the history of the Company. Generally vf. \$100

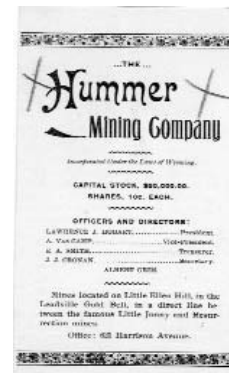


511. Colorado. Lake. Leadville. **Fryer Hill Mines Co. of Colorado, c.1903.** Prospectus and separate fact sheet. 3.5 x 6", 12pp, printed on yellow paper. Spot on front cover. New York promotion. They claim this company's mines have produced \$17 million. Same as the Fryer Hill Mines Co, but slightly different name and same officers. F-vf. The "fact sheet" is 8 x 14" official typed copy, 18pp, mostly a report by Newell. Portions of this report were used in the prospectus, word for word. No maps or diagrams. No illustrations. \$150

512. Colorado. Lake. Leadville. **Garbutt Mining Co, c.1900-1905.** Prospectus. Incorporated in Colorado. Had a 5 year lease on the Garbutt, St. Cripsen and Maud Hicks claims located on Breece Hill, Leadville. There was a 445 foot shaft with a 5 ton ore shipment assaying at 9% copper, 41 ounces silver and 4 ounces gold. Single sheet 6 x 9" tri-folded making 3 pages. Very fine. \$50



513. Colorado. Lake. Leadville. **Hummer Mining Co, c.1900-1905.** Prospectus. Incorporated in Wyoming. The company was working the Iszard lode on ground that adjoined the Little Ellen Hill. Limited information regarding production or ore values. 4 pages, 3.5 x 6". Very fine. \$50



514. Colorado. Lake. Leadville. **Leadville Certificate of Election, 1919.** Issued to Mrs. Maybelle McMahon for winning the 1919 election for City Clerk. Does not indicate which city! Signed by John J. Bohem city clerk. Vignette of Colorado State Seal. Blue border and print with gilt seal. 8 X 11. Slight wear to folds. Very fine. \$40

McKenzie/Pharmacist/Leadville, Colo. Clear, 4.5" tall. (2) Nicolai/ Leadville, Colo. Clear, 4.25" tall. (3) Druggists / Cor. W 6th St And/ Harrison St./ McArthur And Davis/ Leadville,/ Colorado. Clear, 3.5" tall. (4) S. C. Canfield/ Druggist/ Leadville, Colo. Clear, 3" tall. Some dirt on inside. Xf. \$80

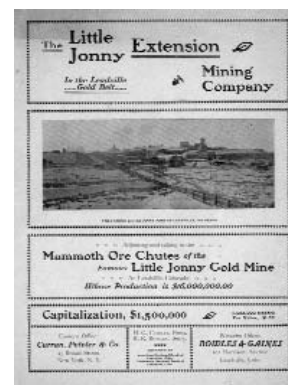


515. Colorado. Lake. Leadville. **Leadville Medicine Bottle Set.** Lot of 4 different bottles. All embossed. (1) Robt H.



516. Colorado. Lake. Leadville. **Leadville Stereocard.** Burro Pack Train, on the Way to Leadville, Colo., U.S.A. Stereo card view of pack burros in the foreground, with miners and other burros heading up the trail. Photographed and published by the Kilburn Bros., c.1890. \$60

517. Colorado. Lake. Leadville. **Little Jonnie Extension Mining Co, c.1900.** Prospectus. Incorporated in South Dakota, promoted from Leadville and New York. Company owned only 1/5th interest in the Silver Nugget Claim, with the other 4/5ths for sale "at a very low price." There are no assays offered for the property, only from producing properties that are nearby, and appears that no development work had been initiated at all. Printed by New Reporter Job Print. Photograph on front page of the Litty Jonny mine, which was not owned by this company. 4 pages, printed on tan paper, 8.5 x 11". Discoloration band at top edge. Very fine. \$75



518. Colorado. Lake. Leadville. **Matchless Mine Real Photo Postcard, c.1940.** Photo by Sanborn, W-1205. Captioned "Ruins of the Famous (Tabor) Matchless Mine". The Matchless was located in the Leadville mining district. Extremely fine. \$25

Some inside staining. No chips. \$28

519. Colorado. Lake. Leadville. **McKenzie Bros Medicine Bottle, c.1890.** McKenzie Bros / Pharmacists / Leadville, Colo. Approx 4 oz. "Pat May 15, 88, D. F. & Co." embossed on bottom.



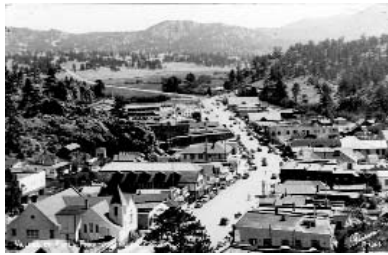
520. Colorado. Lake. Leadville. **McKenzie Bros Medicine Bottles, c.1890-95.** Lot of 3 embossed bottles. Two of the bottles are identical, about 3 oz, one has dirt inside, other mint. Third bottle is about 1 oz, mint. \$65

521. Colorado. Lake. Leadville. **Oro City IOOF Lodge No. 16 Silver Commemorative Coin, 1972.** CALIFORNIA GULCH, 1860 IOOF, 1872-1972 / (pic of IOOF lodge in beautiful valley with mining scene in background) / CENTENNIAL // INSTITUTED AS ORO CITY NO. 16 / CHLORIDE/NO. 31 11/25/78 / CARBONATE LODGE/NO. 16 APRIL 27, 1903 /LEADVILLE, COLORADO / CARBONATE NO. 35 7 / 3/80 / SEPTEMBER 28, 1872. \$20



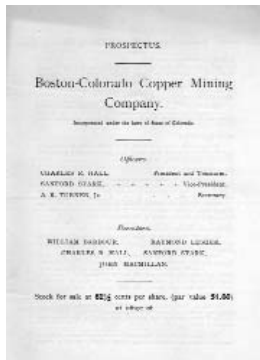
522. Colorado. Lake. Leadville. **Robt H. McKenzie Medicine Bottle, c.1900.** Robt H. McKenzie / Pharmacist / Leadville, Colo. 4.25" tall. About 3 oz. Clean. No chips. \$28

523. Colorado. Larimer. Big Creek. Grant Copper Mining Co, c.1901. Property was located just across the border from Encampment, Wyoming and consisted of the Grant claim group. No assay values are given and there was no development work on the property. The company was issuing 100,000 shares at 10 cents per share. The company was assumed dead by 1906 (Copper Handbook, p.530). Original cover with black and red print. 6 pages, 6 x 9". Wear to a fold crease that runs from top to bottom. Very fine. \$50



524. Colorado. Larimer. Estes Park. Estes Park Real Photo Postcard, c.1940. Photo by Sanborn, #R-1364. "Village of Estes Park Looking East". The town is very busy with cars, shot probably taken during the peak of summer tourist travel. Very fine. \$17

525. Colorado. Larimer. Howes Gulch. Boston Colorado Copper Mining Co, 1902. Prospectus. 4pp, 6 x 9", no fancy cover. Colorado incorporation. Copper-iron sulfide deposit in prospect stage. No indication of the location.



Certificates with this exact same name have indicated property at Salida. Stevens in the 1905 Copper Handbook said they had 7% copper ores. \$75



526. Colorado. Larimer. Fort Collins. Laramie-Poudre Reservoirs & Irrigation Co. Cert #123. Incorporated in Colorado. Issued to S. H Shields for 57 shares in 1901. Signed by D. A. Camfield president and L. M. Purcell secretary. Vignette of farm worker in irrigated field. Black border with copper seal and safety print. "Principal offices, Fort Collins, Colo." printed on certificate. Uncancelled. 8 x 11. The company undoubtedly supplied water for irrigation to the agricultural interests in the area. Extremely fine. \$50

print. 5 coupons cashed in of original 20. The Red River has its head waters in the high country of northeastern New Mexico. This company probably tapped the water resource supplying it to the arid and thirsty ranching farming country of Las Animas or Baca Counties. Extremely fine. \$50



527. Colorado. Las Animas(?). Red River Land & Water Co. First Mortgage Bond, issued 1907, cert #266. Vignette of farm land with farm workers looking over fields. Brown border and underprint.



528. Colorado. Las Animas. Two Buttes Irrigation & Reservoir Co. Cert #48. Incorporated in Colorado. Issued to Chicago Title & Trust Co for 6320 shares in 1918. Signed by A. N. Parrish president and F. L. Harris secretary. Vignette of farm worker in irrigated field. Black border with gold seal and underprint. Uncancelled. 8 x 11. Printer - W. H. Kistler Staty, Denver. Two Buttes is a branch of the Arkansas River that flows through Baca and Las Animas counties. Agriculture is the main source of income in these counties. This company probably provided water for crop irrigation. Very fine. \$50

Sanborn, one is #W-1616, other has no number. Nice shots. Very fine. \$30

529. Colorado. Mesa Verde. Mesa Verde Cliff Dwellings Real Photo Postcards, c.1940. Lot of 2 different cards. Both by



530. Colorado. Mesa. Grand Junction. Grand Junction Real Photo Postcards, c.1940. Lot of 3 different cards. Both taken by Sanborn, #W-1883, W-2014 and W-1082. All fine. \$30



531. Colorado. Mesa. Grand Mesa. Grand Mesa Area Real Photo Postcards, c.1940. Lot of 21 different cards. 10 cards by Sanborn. 3 cards by Dean. 8 cards without photographer noted. All shows landscape views of mountains and lakes around Grand Mesa. Very fine. \$85



532. Colorado. Mineral. Creede. Colorado Mine Lithographs. Lot of 2 different pcs. One image of the Commodore Workings on the Amethyst Vein, and one of West Willow Creek, both by artist Chris Smith, 1984, signed. Limited prints by Alan Carr, lithographer. Each has a "Certificate of Limited Edition". 14" x 11". Extremely fine. \$50

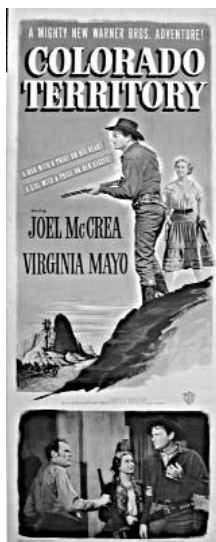


533. Colorado. Mining. Last Stake Gold Mining & Leasing Co. Cert #102. Incorporated in Colorado. Issued to Lemuel Robbins Jr. for 100 shares in 1903. Signed by Henry J. Wilkens president and F. Vergnies Leacoyd secretary. No vignette. Attractive black border with rose colored safety print and underprint. Uncancelled. Printer not noted. 8 x 11". We are not sure where this company had its operations. Very fine. Attractive. \$45

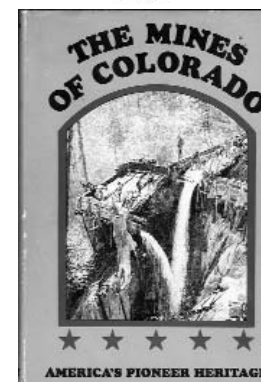


534. Colorado. Mining. Mines of Colorado Reprint, by Ovando Hollister. Originally published in 1867, reprinted by the Promontory Press in 1973.

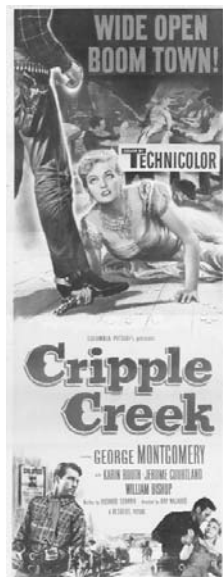
Covers the "geography, geology, mineralogy, climate and agriculture of the region..." This is the classic 1860's work that we routinely cite in our catalogs. 450 pages, with image of miners in sluice. Extremely fine. \$25



535. Colorado. Movie Posters. Colorado Territory, 1949. Movie poster features gun wielding stars Joel McCrea and Virginia Mayo on a hillside overlooking a band of men on horses approaching from below. "A Mighty New Warner Bros. Adventure." Also a vibrant poster, with mesa setting in purples and yellows. Red and blue print. A bit worn around the edges, and heavy creases crosswise, but in very good condition. 14 x 36". \$150



536. Colorado. Movie Posters. Colorado Territory, 1949. This poster features gun wielding stars Joel McCrea and Virginia Mayo on a hillside overlooking a band of men on horses approaching from below. "A Mighty New Warner Bros. Adventure." Also a vibrant poster, with mesa setting in purples and yellows. Red and blue print. A bit worn around the edges, and heavy creases crosswise, but in very good condition. 22 x 28". \$150



537. Colorado. Movie Posters. Cripple Creek Movie Posters, 1952. Lot of 2 different posters. Color movie poster for the Columbia Pictures "Cripple Creek". The movie starred George Montgomery, Karin Booth, Jerome Courtland and William Bishop. Several images from the movie. Printed in 1952. 14 x 36". Small tear in the movie title at middle. Rare. \$150

538. Colorado. Movie Posters. Cripple Creek, 1952. Another George Montgomery picture, also starring Karin Booth. The featured scene in the poster is of Montgomery cold-cocking the bad guy. This same scene is also featured in its actual black and white clip, backdropped behind the color version. In very good condition, only minor crumpling at the top edge, and has since been mounted on cardboard, and preserved behind plastic. 22 x 28". \$150



539. Colorado. Movie Posters. Denver & Rio Grande, 1952. Lot of 2 identical pcs. This action-packed poster not only features stars Edmond O'Brien and Laura Elliot, among others, but scenes from the movie are also present. A train wreck, gun-wielding men, fighting and romance are all portrayed. Very colorful. Red bold print. Very fine, mounted on cardboard support, and preserved behind plastic. 14.5 x 36" (vertical presentation). \$150

540. Colorado. Movie Posters. Gun Duel in Durango, 1957. George Montgomery stars, along with co-stars Ann Robinson and Steve Brodie in this western flick. "...When Dawn Came Up Like Gunfire Over Durango!..." and "The Never-to-die saga of Will Sabre- and the day he had to shoot it out with the killers of his outlaw past!" These dramatic quotes seem to fit the air of the poster: gun-slingin' Sabre, with the beautiful damsel on a rearing horse to his left, and the banded killers coming up the range to his right. Vf. 22 x 28". \$150



541. Colorado. Movie Posters. *Lust For Gold, 1949.* "Love...Violence...Murder...for \$20,000,000 in gold!" sits at the top in red type. Directly below we get the stars' names in on bold red print, Glenn Ford, and Ida Lupino. The central scene takes place on a fabricated cliff's edge, where two men are grappling for a gun, and in which the movie title is carved. The two stars sit regally at the bottom. Very fine, preserved. 14.5 x 36" (vertical). \$150



542. Colorado. Movie Posters. *The Road to Denver, 1955,* starring John Payne and Mona Freeman. "Bullet Blazing Showdown Between Gunfighter Brothers" it reads in the caption at the top. Directly below is the physical representation of the caption. At the very bottom is an illustration of a stagecoach robbery. Very fine, preserved. 22 x 28". \$150

543. Colorado. Movie Posters. *The Road to Denver, 1955,* starring John Payne and Mona Freeman. "Brother Against Brother...Bullet for Bullet...and the honey-haired blonde was the prize" it reads in the caption at the top. Directly below is the physical representation of the caption. At the very bottom is an illustration of a

stagecoach robbery. Very fine, preserved. 14.5 x 36". \$150 (no illustration)

544. Colorado. Oil. *Apex Refining Co.* Cert #9905. Incorporated in Colorado in 1920. Issued to Allison J. Closson for 60 shares in 1921. Stamped signature of president C.W. Savery and signed by D.C. Stratton. No vignette. Orange border. Uncancelled. 8 x 11. Printer - Goes. The company was probably active within the state of Colorado, but we are not sure. Stain at top of right fold. Semi-professional tape repairs to folds which appear to have been detached. Poor to fine. \$20



545. Colorado. Oil. *Hub Wyoming Oil Co.* Incorporated in Colorado. Cert #2014. Incorporated in Colorado. Issued to Frank Carson for 1000 shares in 1917. Signed by David President and John Mauro secretary. Vignette of oil field with derricks and a building. Two smaller vignettes of derricks with gushers at each edge. Green border. Uncancelled. 8 x 11. Printer - Goes. The company either had its operation in Colorado or Wyoming. Very fine. \$15

of oil field with derricks and a building. Two vignettes of derricks with gushers at each edge. Uncancelled. 8 x 11. Printer - Goes. Wear to folds. \$15

546. Colorado. Oil. *IXL Oil & Ref Co.* Cert #176. Incorporated in Colorado. Issued to Frank Carson for 1000 shares in 1918. Signed by W. S. Tarbell secretary and president. Vignette



547. Colorado. Oil. *Kansas Colorado Oil & Ref Co.* Cert #336. Incorporated in Colorado. Issued to Peter Keller for 200 shares in 1917. Signed by O. L. Young president and Louis G. Baghott secretary. Vignette at upper left of oilfield with derricks and horse drawn oil car. Smaller vignettes at each corner of oil related scenes. Black border with gold seal and background design. Uncancelled. 8 x 11. Printer - Goes/W. H. Kistler, Denver. Very fine. \$15

548. Colorado. Ouray. Camp Bird. *Rescue Party Real Photo Postcard, c.1940.* The shot shows several men prodding deep snow with a long line of burros on the road. Captioned "Rescue Party on the Camp Bird Road". No photographer noted. Very fine. \$25



549. Colorado. Ouray. Lower San Miguel. *Elk Creek Mining Co.* Cert #35. Incorporated in New York. Issued to Charles E. Hoffman for 100 shares in 1881. Signed by E. W. Rapallo president and C. E. Hoffman secretary. Vignette of the New York State Seal. Black border and print with "Issued for Property Purchased" in red at left edge. Uncancelled. Printer not noted. 5 x 9". All the people involved with this company were from New York. We were able to locate the operation from the photocopy we have of the Articles of Incorporation. Extremely fine. We have a few of these. \$175/each

550. Colorado. Ouray. Ouray. Ouray Area Real Photo Postcards, c.1940. Lot of 7 different cards. Four are by Sanborn with views that include: Birdseye view of Ouray, Swimming Pool and Gold Fish Ponds at Ouray, Cascade Falls and Overview of Ouray. Two of the cards have no photographer, showing Sneffles Creek and an overview of Ouray. The last card is by Smith, with a fabulous shot of a miner's cabin with two big horn sheep standing on the front porch, my favorite view in the lot. Vf. \$70



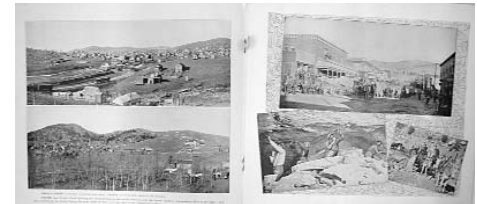
551. Colorado. Park. Red Ruth (Alhambra). Andesite Gold Mining and Town Co. Prospectus (2). 1902. Preliminary prospectus and regular prospectus. Preliminary is 8 x 11", purple and green on buff. Some underlining on cover. 4pp includes only the briefest of descriptions of the property and management. Colorado incorporation. Ohio promotion. Located 15 miles west of Cripple Creek. Included 85 acres of patented ground and 160 acres of placer gold ground. The regular prospectus is 3.5 x 6". The properties were patented in June, 1901. They contained 1800 feet of underground workings and had assays of about one ounce per ton gold. \$100

552. Colorado. Pikes Peak. Pikes Peak National Encampment Medal, c.1905. Relief of Pikes Peak Rail and building atop a mountain of rock and gravel. Great depth perception and artistry. "Pike's Peak" engraved on one of the rocks at the bottom of the pile. The reverse says, "In honor of the Brave Men who...Defended the Union...1861-1865." Denver, 1905. Rd, Br, 70mm. Toned, but Xf. \$65

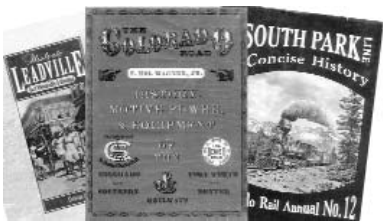


553. Colorado. Pitkin. Aspen. E. T. McElvain & Co Medicine Bottle, c.1885. E. T. McElvain & Co / Druggists / Aspen, Colo. 3ii bottle, about 2 oz. Some staining. 4.5" tall. No chips. \$40

554. Colorado. Railroad. Among the Rockies, c. 1905. W. H. Jackson Photographer, published by H. H. Tammen, Denver, Colorado. 10" X 12". 32 B & W photos of scenic places along the rail line of Colorado. A list of railroad mileages between cities is offered at front. The title page is signed by A. Clark, Feby. 4, 07 with "On the Train to NY up Caldwell Sta" handwritten below signing. Front cover is deep burgundy in color and has sustained some water damage with one of the results of bleeding of color to title page. Photographs are in



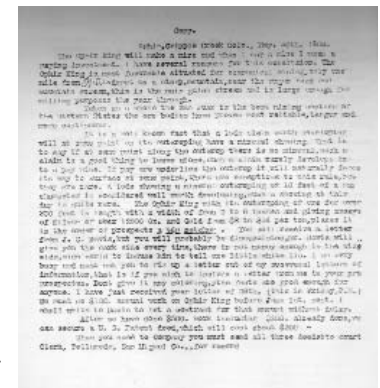
excellent condition. \$150



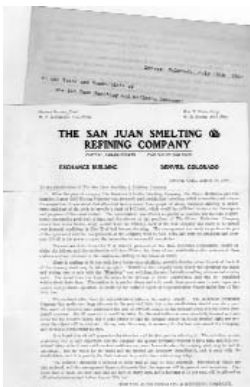
555. Colorado. Railroad. The Colorado Road History, Motive Power, & Equipment of the Colorado & Southern & Fort Worth & Denver Railways, by F. Hol Wagner, Jr. Dust jacket a little worn around perimeter, and cracked at tops of spine Copyright 1970. Published by The Intermountain Chapter National Railway Society, Inc. 415 pp, including title page, and index. The long title emphasizes the wide contents that it covers. For instance, the author not only covers the railways in writing, illustrates them with advertisements, illustrations, and photographs. Very good condition. \$100

556. Colorado. San Juan. Ophir. Ophir King Mining Co, 1900.

This lot is different from the typical prospectuses offered in this sale. Titled "Copies of Correspondence Between the President and Stockholders of The Ophir King Mining Company." Contains copies of 22 pages of letters mostly to George Slater from various people. The company appears to have owned the Silver King mine located near Ophir in San Juan County. Most of the letters are datelined Cripple Creek, 1900. The letters are within a blue cover. Very fine. \$75



557. Colorado. San Juan. Silverton. San Juan Smelting Refining Co, 1903 & 1908. Market letters. The story of this company is offered under the Kendrick & Gelder Smelting Co (see above) as this was a consolidation of Kendrick & Gelder, Paradox and Oliver Reduction Co in 1903. This is a concise 4 page informational letter to the stockholders announcing a delay in the consolidation process. Promoted by the Mines Securities Corp, NY. As will be found in the story under Kendrick & Gelder, this company was a scam. Tears along fold creases. Trimmed tight along bottom. Fine. The second item is dated 1908 and is a letter to stockholders regarding the stockholder who brought suit against the company and for them not to listen to a Mr. Drew. The letter was sent out just a few months before the collapse of the company in the early part of 1909. 8 pages, extremely fine. \$75

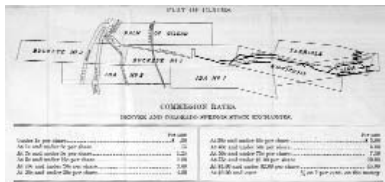


558. Colorado. San Juan. Silverton. **Silverton Real Photo Postcards, c.1940.** Lot of 2 different cards. Both by Sanborn. One is of the Mayflower Mill, card #W-1592. The other is shot at the top of Red Mt Pass, card #W-1362. Very fine. \$20



559. Colorado. San Juan. Sultan. **Notaway Gold & Copper Mining Co, c.1900-03. Prospectus.** Colorado corporation and promotion. 12pp with self-cover plus 2pp introductory letter signed by the company president, A. J. Vivian. Pictorial. They held three claims near Central City, including the Notaway and Aurora mines, which were leased out. 9 x 12, folds, trimmed at right edge. \$75

560. Colorado. San Miguel. Iron Springs. **Ophir King Gold Mining Co, c.1900-1905.** Prospectus. Owned property on Yellow Mountain, near Ophir, in the Iron Springs district. Two ore samples were sent to the assayer after the printing of this prospectus. The samples were "selected these two samples - one as the poorest, the other as the best. The worst came back at \$265.40 and the best was \$519.80. 4 pages, 5.5 x 8.5". Very fine. \$75



561. Colorado. San Miguel. Ophir. **Butterfly Terrible Gold Mining Co, c.1902.** Market Letter. 4pp, 9.5 x 12", folds, some discoloration and splits along folds. Ten claims, six of which were patented. Rail siding present at the mine. Two miles of underground workings. 1300 foot aerial tram. Large cross section in center. Located along Lake Fork Creek. They claim that one stope produced \$225,000. Fine. 4 x 9". \$75

562. Colorado. San Miguel. Telluride. **Telluride Area Real Photo Postcards, c.1940.** Lot of 3 different cards. One is by Sanborn, W-1617 showing Trout Lake between Rico and Telluride. The other two cards are by an unknown photographer and are of a different style than Sanborn. One shows Bridal Veil Falls near Telluride and another shows an old outhouse. Very fine. \$20



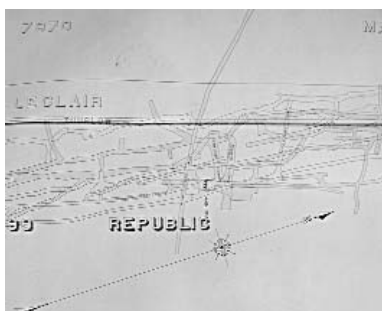
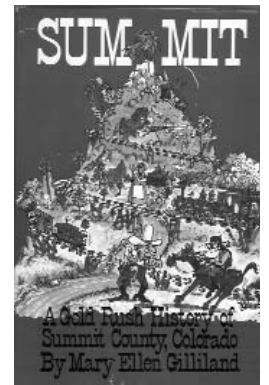
563. Colorado. San Miguel. Telluride. **W. R. Samson Medicine Bottle, c.1900.** W. R. Samson / Druggist / Telluride, Colo. 3iii bottle. 5" tall. Clean. Slight purple tint. No chips. \$28

564. Colorado. Scenic. **O'er Canon and Crag, To the Land of Gold, 1904.** Published by Williamson-Haffner Eng Co, Colo. There are 24 colored photographs all place on the right with a caption for each on the opposing page. Distributed by the Railroad View Publishing Co and is described as "The one day trip that bankrupts the English Language." Cover is faded and detached. The soft cover is purple. 9 x 11". Fine. \$100



565. Colorado. Summit. Breckenridge. **New York & Colorado Mining Co, c.1900-1905.** Prospectus. Promoted by Western Securities, New York. Owned the Sunbeam claims located just 20 minutes walk from Breckenridge. The Colorado & Southern Ry crossed the property twice as it ascended the mountain. There were 3 incline tunnels, 125, 130 & 160 feet. Ore was ran between \$26 to \$110 with gold, silver and lead. On the inside is a small map showing the claims. 4 pages, 3.5 x 9". Small crease at top edge. Very fine. \$50

566. Colorado. Summit. **Summit: A Gold Rush History of Summit County, CO,** by Mary Gilliland. Published by Alpenrose Press, 1980. A "lively look at Summit County's colorful goldrush past." Soft cover echoes that sentiment with a cartoon of characters, good and bad guys, damsel in distress, cowboys and Indians, all atop a mountain. Nice book. 336 pages, with illustrations. \$25



567. Colorado. Teller. Cripple Creek. **"Morning Glory versus Mary McKinney" Map, c.1910-1920.** Large map of the Republic lode claim #7499, pen and ink, hand colored. Plan view showing claim boundaries, mine shafts and workings, etc. Fancy. The neighbor property is the Aileen patent with two shafts within ten feet of the Republic/Aileen boundary. The Aileen shaft was driven on angle onto the Republic property. 3' x 9', paper on canvas, slightly dirty but overall very fine. This is an important record of the underground workings of the Republic showing five different levels. No assays shown. \$200

568. Colorado. Teller. Cripple Creek. Ajax Mine Group Title Abstracts & Document, c.1895-1935. Approximately 300pp. The Ajax mine was located on Battle Mountain, next to the Portland mine. The property changed hands several times between 1900 and 1925. Ajax GMC initially owned the property, then the Colburn Ajax MC and finally the Tonopah Ajax MC was successfully working the property in 1925. The property was said to have had a historical production of nearly \$5 million. (Mines Handbook, 1925, p.812). \$90



569. Colorado. Teller. Cripple Creek. Bernard Creek Map, near Mt. Hallett, probably west of Cripple Creek, 1892. Ink on linen, by Harer & Lowry. Shows prominent geographic features such as Mt. Hallett, Spring Creek (changed to Bernard Creek), but no survey numbers, etc. Scale is 1" = 400'. 30 x 48". Folded and rolled, with stains along folded edges. Very fine. \$150

570. Colorado. Teller. Cripple Creek. Big Twenty Cons Gold Mining Co, c.1901. Prospectus, 4pp, 8 x 11" Boston promotion, printed on yellow paper. Attached to a similar prospectus for the Mountain Boy GMC, also of Cripple Creek. No meaningful info given for either, though less for the Big Twenty. Some blue pencil underlining. Folds, wear, some discoloration. \$75



571. Colorado. Teller. Cripple Creek. Cameron Township Map, c.1935. Cameron was located within the Cripple Creek district. On vellum. 24 x 30". This map shows claim boundaries and town plat, by Hills & Willis, Mine Engineers, Cripple Creek. Very fine. \$50

572. Colorado. Teller. Cripple Creek. Collectable table top souvenir trays. Lot of 2 different pcs. (For candy or cigarettes?) One is 4 x 6" with hand painted blue columbine and "Cripple Creek" in gilt. (TK, Vienna, Austria) on back. Ceramic, ornate edges, no chips. The other is copper plate on raised white metal with picture of

the National Hotel and Teller Co. Courthouse. Fancy, ornate. Copper plate worn off about half of the tray. May have had light gold plate. Both near mint. \$85



573. Colorado. Teller. Cripple Creek. Colorado Souvenir Cups, c.1900-20. Lot of 3 different souvenir cups that were collected in the Cripple Creek area. All are 3" tall and 2.25" wide at top. 1). A. S. Syndicate/ P.O. Box 1529/ Denver on bottom. Light silver plate. Scenes embossed on the cup include Mount of Holy Cross, Mining Exchange, Garden of Gods, Globe S & M Co., Denver club, and the State Capitol. Near mint. 2). Daniels & Fisher Stores Co./ Denver on bottom. Brass plate, but may have been silvered. Embossed on the cup are the Denver Club, State Capitol, Holy Cross, Garden of Gods, Mining Exchange, Globe Smelting & Refining Co. Very fine, except for some dark spots. Fine.

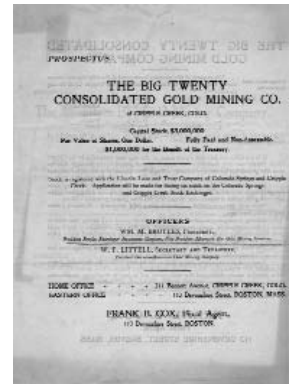
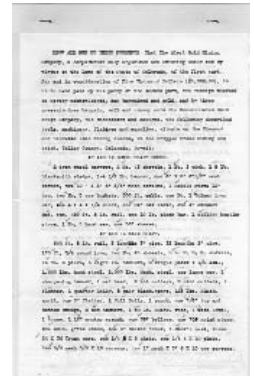
3). H. W. Wyman, Colorado Springs, Colo. Made in Germany on bottom. Scenes include, Garden of Gods, Indian Camp, Burro & Pikes Peak, Seven Falls. Darkened, but near mint. \$65

574. Colorado. Teller. Cripple Creek. Columbia Gold Mining Co, c.1900. Prospectus. Six panel folding pamphlet, 4 x 9", New York promotion. 2 panels blank with hand written notes by Vigouroux. Very little info on the claims and no notes on production. Blue print. \$75

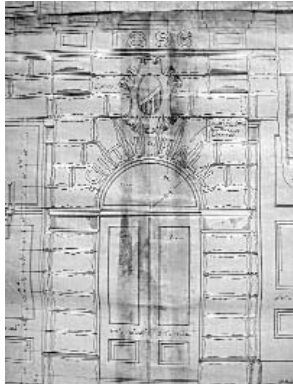


575. Colorado. Teller. Cripple Creek. Cripple Creek Cabinet Card Photograph, c.1900. Photo of two children, one seated in a chair, the other standing. The children are wearing rather flamboyant clothes. The photographer was Schnedina Lehman, 412 E. Bennett Ave, Opp. National Hotel, Cripple Creek, Colo. The photo has scribbles from what appears to be a child's mischief. Photo is 4 x 6", matte is slightly larger. Wear to corners with minor dings. Fine. \$25

576. Colorado. Teller. Cripple Creek. Cripple Creek Cabinet Card, c.1891-1899. Photo is a portrait of an unidentified man and woman. The photographer was Sours, 321 Bennett Ave, Cripple Creek, Colo. It is not indicated whether the photographer was Robert or William Sours. 4 x 6.5". Extremely fine. \$25



577. Colorado. Teller. Cripple Creek. **Cripple Creek Cabinet Card, c.1895.** Photo is a portrait of a family with mother and father with the three children. Photo is laid out landscape style. Photographer - T. J. Gillen, bet Car and Bennett near 4th St. The reverse has penciled "Ma, George, Pa, Frank, Gylda." 4 x 6.5". Lower left corner is bent with a top piece of cardboard gone. Ding at top edge near left corner. Very fine. \$25



578. Colorado. Teller. Cripple Creek. **Cripple Creek City Hall Original Pen and Ink Drawing or Rendering of the Front of the Proposed Building, 1896,** by John J. Muddart, Architect, 3/4" scale. 36" x 36". Shows blocks of building stone, etc. Three pieces of linen, attached by adhesive. Stains, discoloration along glued sections. Repaired along old adhesive attachments. \$300

579. Colorado. Teller. Cripple Creek. **Cripple Creek Collectible Ephemera, 1910-1955.** 1) Blinky's souvenir miniature circus flag, featuring polar bear in circus wagon; C.C./Victor souvenir flag, black and white. 2). Souvenir miner statues, brass and plaster. 3). Victor drug store complimentary backgammon game. 4). Seashell with compass attached at top and Cripple Creek printed on side. 5). Pike's Peak sterling souvenir spoon, c.1900. 6). Cripple Creek Museum Opening, 1953 crucible. 7). Gold Camp Credit Bureau desk not box made of wood with gilt lettering. 8). Cripple Creek and Victor souvenir felt flat with image of a miner with his mule at left edge. \$90



580. Colorado. Teller. Cripple Creek. **Cripple Creek Collectibles.** Lot of 4 different items. Bottle opener / ice pick, "Miners Ice & Fuel Co. / Phone 398 // same. 8" long, 1.75" wide at largest end. Wood on wire spindle for "The Boston Department Store / 212-14 East Bennett / Cripple Creek / Colo.", reportedly a school book carrier. 4". Small red whistle for "Blue Front Grocery. Writing in poor condition - not very legible at this point. 2". Small medal-type piece for "Poll-Parrot Solid Leather Shoes" with a picture of a parrot. Enamel (?), convex 0.7" piece on wm fob, top broken. \$65

581. Colorado. Teller. Cripple Creek. **Cripple Creek Drug Store Documents, 1897-1939.** Lot of 23 various receipts from Cripple Creek drug stores, such as City Drug Store, 1897, Central Drug Store/Co., 1898, and the palace Drug Store among others. Receipts date from 1897-1939. All are in very fine condition. Some folds. \$100



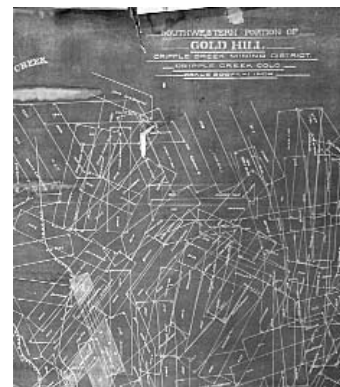
582. Colorado. Teller. Cripple Creek. **Cripple Creek Gold Milling Co.** Lot of 2 certificates. Incorporated in Colorado. Unissued, unsigned, and uncanceled. Vignette of the Gold & Globe Mill. Gold leaf border and black print. Very fine. 9 x 12". \$20

583. Colorado. Teller. Cripple Creek. **Cripple Creek High School Football Megaphone, 1940.** Schedule printed on the megaphone, red with black writing. "C.C." painted on it. Sealright Sport Megaphone by Sealright Co., Fulton, NY USA. A few creases, fine. 10 1/2 x 4". \$25



584. Colorado. Teller. Cripple Creek. **Cripple Creek Mine Supply & Hardware Co Billheads, 1897-1920.** Lot of 43 billheads from various Cripple Creek businesses, such as "Cripple Creek Mine & Supply Co.," "J. H. Wilber Mining Machinery," "Teller Lumber Co.," "A. L. Davis Building Materials" and others. Many of the invoices are for charges made by the city of Cripple Creek. 1897-1920. \$125

585. Colorado. Teller. Cripple Creek. **Cripple Creek Mining District Map, Southwest Portion of Gold Hill, c.1908,** by Hills & Willis. Scale is 1" = 300', 22 x 30". Reverse blue line. Shows patents on Gold Hill. Some water stains. Four inch tear at top center, but otherwise fine. \$75



586. Colorado. Teller. Cripple Creek. **Cripple Creek Pamphlets & Magazines, 1970-90.** 6 pieces, including the Denver Westerners Roundup, 1971, and the C.C., Colo. Commemorative Centennial Program from 1992. All very fine. \$25



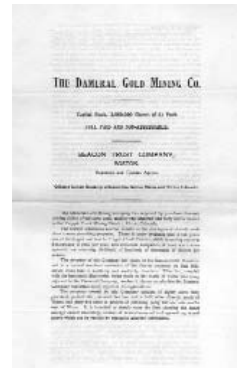
587. Colorado. Teller. Cripple Creek. **Cripple Creek Souvenir Badge 4th of July, 1899.** "Souvenir" in gilt lettering in red, white and blue banner. Hanging below is a fancy five-point gilt medal. "1899 / Fourth July / (pic miners) / Cripple Creek, Colo / Teller / County // Schwaab. 2" x 1.5". Near mint medal. Pinback detached and missing. \$75

588. Colorado. Teller. Cripple Creek. **Cripple Creek Trading & Mining Co Title Reports, c.1895-1935.** Owned the Canary Bird, Pearl, Dolphin and other claims. About 30 pp, \$90 (no illustration)

589. Colorado. Teller. Cripple Creek. **Dameral Gold Mining Co, c.1900.** Prospectus. 8 x 14", 4pp, undated. Held 14 claims south of Battle Mountain. They reported assays from \$2 to \$9 per ton. Located along the Florence & CC RR. Boston promotion. Folds, but XF. \$75



590. Colorado. Teller. Cripple Creek. **Express Receipts, 1910-20.** Lot of 10 pcs. Two are from the Adams Express Co, 1911 & 1919. One from American Railway Express Co, 1919. United States Express Co, 1911. Six pieces from Wells Fargo & Co Express, 1911. \$90



591. Colorado. Teller. Cripple Creek. **Golden Cycle & Theresa Mining Cos and the F.G. Logan Tract at the Goldfield Townsite, Map of the Holdings, c.1895.** Map by Davis & Bylar, Mining Eng., Victor, Colo. 36" x 43", 1" = 100', no date, circa 1895. Blueprint on canvas, rolled. Bottom is frayed but only two chips missing into border. Shows all patents, surveyed claims, town lots, underground workings, railroad routes, streets, etc. Generally fine. \$250



592. Colorado. Teller. Cripple Creek. **Golden Cycle Mining & Reduction Co.** Cert. #923. Incorporated in West VA. Issued to **L. G. Carlton for 10,000 shares** in 1915. **Signed by A.E. Carlton** as president. Vignette of "Largest Cyanide Mill in the U.S." Cancelled by hole punches over signatures. The story of the Golden Cycle has been written up several times in our previous catalogs. L. G. Carlton was Albert's brother who was an active participant in the building of the Carlton empire. Very fine. \$85



593. Colorado. Teller. Cripple Creek. **Golden Cycle Mining & Reduction Co.** Cert. #3371. Incorporated in West VA. **Issued to O. H. Shoup for 500 shares** in 1916. **Signed by A. E. Carlton as president.** Cancelled by hole punches over signatures. Vignette of "The Largest Cyanide Mill in the U.S." **Signed on reverse by Shoup.** **Oliver H. Shoup** moved to Colorado Springs at age 13. He got involved in mining with Velmer Reed and was secretary of the Rose Nicol GMC and the Moon Anchor MC. Shoup and Reed organized the Midwest Oil Co, Midwest Refining Co and the Westland Securities Co. (Hills, p.413; Levine, p.65-67). Very fine. \$65



594. Colorado. Teller. Cripple Creek. **Golden Cycle Mining & Reduction Co.** Cert. #6850. Incorporated in West VA in 1895. **Issued to Chas. L. Tutt for 500 shares** in 1918. Cancelled by hole punches over signatures. **Signed by president A. E. Carlton.** Vignette of "Largest Cyanide Mill in the U.S." Brown border. Vf, smudge at right margin. Printed by Smith Brooks Co. Vignette of "Largest Cyanide Mill in the U.S." Brown border. **Signed on reverse by Tutt.** **Tutt** was Spencer Penrose's business partner. Tutt made a name for himself when he staked the C. O. D. claim that was a bonanza mine by 1893. Soon after Penrose and Tutt were buying properties, almost all of which made them both very wealthy. Very fine, soiled at top edge. \$180

595. Colorado. Teller. Cripple Creek. **Golden Cycle Mining & Reduction Co.** Cert. #2194. Incorporated in West VA. **Issued to A.E. Carlton for 500 shares** in 1916. **Signed by Carlton as president.** Vignette of "Largest Cyanide Mill in the U.S." Cancelled by hole punches over signatures. **Signed on reverse by Carlton.** **Carlton** and his brother, Leslie, were adept business men who used



their influence with the First National Bank to access information on mining properties. They bought up several overlooked claims and under the umbrella of the Golden Cycle MC, consolidation a mass of properties. In 1911, after long legal battles, Carlton's hard fought battle to consolidate properties was won, forming a property asset of over \$240 million. Very fine. \$65

596. Colorado. Teller. Cripple Creek. **Gould Mining & Milling Co, Kittie Lane and N. L. Desperandum Companies Title Report with Backup Documents, 1934.** About 200 pp detailing the title progression, ownership and company name changes from 1892-1934. The Gould Mining and Milling Co. began with the property in 1892. From there the progression was Gould Consol. MC (1901), The Gould MC (1904), Kittie Lane GMC (1912), N.L. Desperandum (1932). The lot contains title summaries, deeds, agreements, correspondence, directories, minutes, shares subscription forms, mine superintendent reports, shareholder records etc. of the companies. There are no Jay Gould documents in this file. See similar lots in the Titles and Abstracts section. \$150 (no illustration)

597. Colorado. Teller. Cripple Creek. **Hallett Family Correspondence, 1895-1899.** In 1895, Henry W. Hallet was a mine promoter in Cripple Creek. Another one of the Halletts was a funeral director in Colorado Springs in the 1890's. The Halletts were early prospectors in Cripple Creek, who subsequently had a mountain named after them. They staked, bought, traded and sold mining claims with regularity. This group contains correspondence (9 letters) from various people, reflecting many deals, geologic reports, grubstaking, etc. One reproduction photo shows the Hallett and Hamburg Mine, possibly with the Hallett family in the view. J. L. Hallett had Wm. Trevorrow, supt. of the Pharmacist and Victor Properties. The group contains 21 letters & 1 reproduction photo. \$300



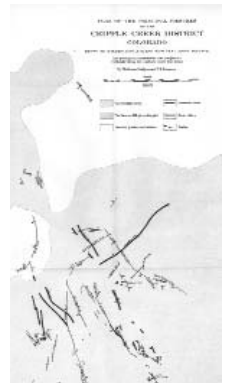
598. Colorado. Teller. Cripple Creek. **Harvey Moulton/ Mfg. Co./ Cripple Creek/ Colo.** Aqua, crown top beer or soda bottle. 1 pint. Plain base. Company embossed in circular slug plate. Broken top, some milky discoloration. Fine. \$10

599. Colorado. Teller. Cripple Creek. **Improved Order of Redmen Lodge Uniform. Complete with accoutrements.** Full length navy blue coat with crème colored lapel and cuffs, and unmarked brass buttons. Made by Pettibone Mfg. Co., Cincinnati. 6" wide red velvet shoulder sash with "C.C.C. Tuscarora 39" at bottom (multi-colored rhinestones woven throughout). Gilt tassels & borders. Crème colored vest and matching pants. Red plaid wool shirt, and shoulder sash with leather pouch marked "RML". 12" tomahawk with "Tote" embossed in an eagle on the blade (nickel plated brass). Three gorgeous breast badges: a) gilt eagle with "tote" in red enamel in eagle carrying ribbon with "IMPD O.R.M.". Suspended gilt banner engraved "Tuscarora 39". Beneath that is suspended the classic reedmen emblem of tomahawk, sword, peace pipe, etc., with banner engraved "W.J. Whitefield" (5" long) in original case. b) Similar medal, but perhaps lapel pin, 3". Eagle with "F&FC" in banner, suspended from which is an ornate enamel shield P/S- Improved order of Redmen/ Tote, with symbols of lodge suspended underneath. All gilt, and in original leather holder. c) Member badge with ribbon. Gild hanger with "member". Two ribbons: top is embroidered Indian on white; underlying ribbon is red, blue, green with "Annual Session/ Imp'd. O.R.M. of Colorado/ Idaho Springs./ June 7-9 1915. This ornate uniform was used for this fraternal group in Cripple Creek in about 1903. The owner, Whitefield, may have been the group commandant. These groups were formed for community charity. Different groups had different themes. This is not the usual Redman uniform, we were told. Very rare to have this complete uniform with associated accoutrements and badges. Everything is in very fine condition. The uniform is for a small person. Unfortunately, we were unable to find anything on Whitefield. Mint. \$750

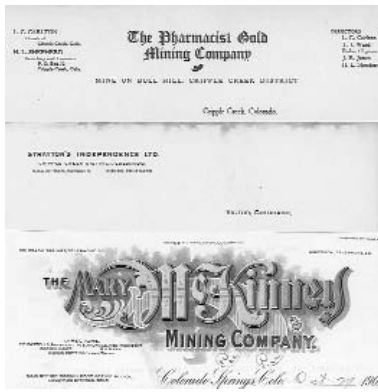


600. Colorado. Teller. Cripple Creek. **James Wild Portrait Matted Photograph, c.1900.** The reverse identifies the man as "James Wild, Teller County, Cripple Creek, Commissioner." The photographer was Webster, Cor. 3rd & Carr Ave., Cripple Creek, Studio. Photo is 4 x 5.5", matte is 5 x 7". Extremely fine. \$35

601. Colorado. Teller. Cripple Creek. **Map Plates from USGS Professional Paper No.54, 1905.** Lot of 6 different pcs. Two plates feature the Portland Mine, one shows a cross sectional view and the other is a general geology map of the property. One of the plates shows a sectional view of the major shafts from the Abe Lincoln mine to the Stratton Independence mine. A nice map of the Battle Mountain mines. The last two are maps of the geology of the Cripple Creek district including a section view of ore shoots and plat of ore shoots. \$40

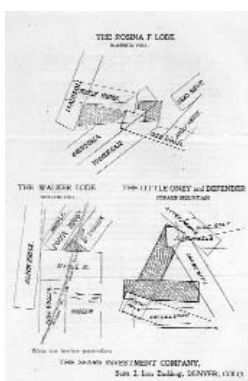


602. Colorado. Teller. Cripple Creek. Midget-Bonanza King Original Pen & Ink Map, c.1920. 36" x 42". For use by the mining engineer (Farragow?), unfinished, probably for in-house use only. Shows the Bonanza King claim and underground workings. Shows the claim broken into several segments that were leased to other miners. Most the leases had shafts (shown) but contain no other underground information other than for the main workings. In pencil are written "Burke Lease," "Donnelley Lease," "Claybull Lease," "Morris Lease," "Worchester Lease." Scale 1" = 40'. This was probably a map from the Midget Cons GMC which owned the Midget and Bonanza King Mines through the 1940's (Mines Handbook & Mines Register). Paper on canvas. No title block. \$100



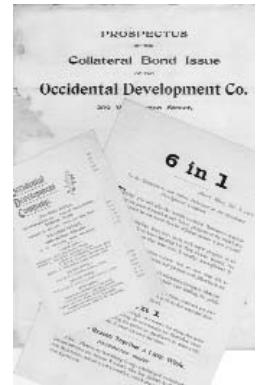
603. Colorado. Teller. Cripple Creek. Mining Company Letterheads, 1901. Lot of 3 pcs. Pharmacist GMC, Cripple Creek, unused; Stratton's Independence, Victor, 1901, signed by H. A. Shipman, Manager; Mary McKinney, Colorado Springs, 1901 with fancy masthead at top. Very fine. \$35

604. Colorado. Teller. Cripple Creek. Moon Anchor Level Maps, 1935. Group of eight level maps for the Moon Anchor Mine for the 3rd through the 6th levels, as described below. 1) "3"- 1" = 20', 20 x 24" blue line. Third level underground workings. Shows proposed drifts, etc. 2) "3"- 1" = 40', 24 x 40" ink on linen. Shows third level underground workings. Very fine. 3) "4"- 1" = 20', 20 x 24", blue line, 2 copies. Shows geology and engineer's notes. 4) "5"- 1" = 20', 24 x 40", ink on linen. Shows underground workings, shafts, etc. for the 5th level. 5) "5"- 1" = 20', 20 x 24", blue line. Underground workings for the 5th level, showing faults and miscellaneous geologic notes. 6) "6", 1" = 40', 24 x 40". Underground workings for the 6th level, with some geology notes. 7) "6", 1" = 40', 24 x 40", ink on linen. Similar to the "5" level map above, at the same scale. Shows new underground drifts, etc. All are in very fine condition. \$500



605. Colorado. Teller. Cripple Creek. Nighthawk Mining Co, c.1900-1905. Incorporated in Colorado, promoted from Denver. Property included the Little Oney and Defender, located on Straub Mountain just outside of Victor, Rosina F., on Rosebud Hill, Walker, on Beacon Hill, all located in the Cripple Creek district. No assays offered in this prospectus and there was limited development work indicated. 4 pages, 6 x 9.5". Printed by Whitaker Printing. The last page has claim plats of the properties. Very fine. \$50

606. Colorado. Teller. Cripple Creek. Occidental Development Co, 1900. Lot of 3 different prospectuses. Promoted from Boston. The company owned 6 different sets of property in different counties in Colorado and of different mineral wealth. Some of the descriptions do not offer specific locations. Owned the Harrisburg group, adjoining the Freeland. Owned the Fraction group near the Stanley mine. Owned coal lands in Huerfano County. Owned the X-10-X-8 mine near Victor. Uranium lands in Rock Creek district, Montrose County. And finally owned copper claims also located in Montrose County, but these properties were undeveloped. Since only a few of the lands were located, we chose to place this company at Cripple Creek for convenience. 4 pages, 6 x 9.5". Very fine. A second prospectus is promoted the sale of bonds in the Occidental Dev Co with the use of collateral from the Duplex Gold & Copper MC and the Climax MC. The Duplex company is listed in the Copper Handbook, 1908, with "location of lands, if any, unknown." The Climax MC is listed as having property in Chaffee County. 3 pages, 8.5 x 11". The last prospectus is 3.5 x 6 which unfolds to make 8 pages and only discusses the property located near the Freeland, at Idaho Springs. All very fine. \$100

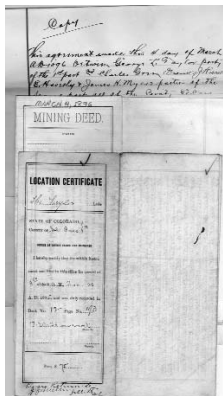


607. Colorado. Teller. Cripple Creek. Progress Gold Mining Co, c.1900-1905. Prospectus. Owned the Gold King on Gold Hill, Becky Sharp & Dauntless of Raven Hill, Spider & Trinidad on Beacon Hill, Gold & Tin Cup on Rhyolite Mtn and M.W.S. on Bull Hill. Promoted by John McManus & Son, Seattle. 1 page, 3.5 x 6". Very fine. \$50

608. Colorado. Teller. Cripple Creek. Rocky Mountain Directory & Colorado Gazetteer. Published in 1871. This is the first major mining directory for Colorado, and cited by us in our research. It is a rare and important work. Approximately 500 pages. Green hardbound, with gilt embossing on cover. One of the indispensable research tools we have used in the past. Although the condition of the directory is moderate, the information contained makes this lot an extremely fine book to own. Binding broken. \$775



609. Colorado. Teller. Cripple Creek. **Rose Nicol Gold Mining Co.** Cert. #3170. Incorporated in Colorado. **Issued to A. E. Carlton for 1 share in 1926. Signed by Carlton on reverse.** Signed by Aitken as secretary. Fancy masthead, no vignette. Pink border and seal. Gowdy Printing & Engraving. 6 x 9" Dated Colorado Springs, Colo. Mines included the Rose and Gurley on Battle Mountain and Bull Hill. Very fine. \$65



610. Colorado. Teller. Cripple Creek. **Taylor Lode Property Documents, 1895.** The items include: Location Certificate, Copy of Deed agreement Letter, and Mining Deed. Deed signed by George Taylor, 16 x 10.5"; location certificate gives the property area and location, 14 x 8"; letter is a copy, with forged signatures of all parties, sort of a proof of the real document, 14 x 8". All 3 documents are very fine. \$75

611. Colorado. Teller. Cripple Creek. **Title Abstracts and Worksheets, c.1895-1910.** Documents for a large group of properties. Also includes some preliminary reports. Includes some of the big mines: Gold Coin, Independence, Smuggler, Little May, Mt. Rosa Placer, Burlington, Doctor Lode, Forlorn Hope etc. About 300 pp. \$150 (no illustration)

612. Colorado. Teller. Cripple Creek. **Title Abstracts, c.1891-1949.** Property owned by A. E. Fry. They include at least 50 patented claims involving numerous companies. Claim names include: Sure Thing, Small Hopes, Alice, Mint, and many others. This is a large file of about 400 pp by the Colorado Map, Abstract & Title Co. \$200 (no illustration)

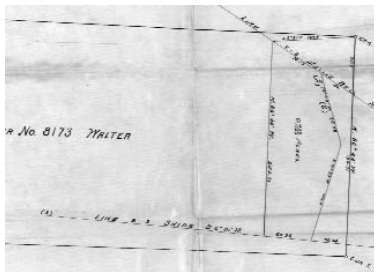
613. Colorado. Teller. Cripple Creek. **Title Study Regarding a right of way issue for a highway in Cripple Creek, c.1895-1935.** Includes maps, reports and documents. About 100pp. \$100 (no illustration)

614. Colorado. Teller. Cripple Creek. **Toy Banks.** Lot of 2 different items. Collected from Cripple Creek area. The first is a toy **Davy Crocket Bank**, 1895-1910. Original paint on white metal. Lock and door missing. The second item is a nickel plated cast iron toy safe with combination lock door. Star patterns embossed throughout. No maker shown. Beginning to show rust, particularly at right side door. 3.25 x 3.5 x 5" high. Both items fine. \$120



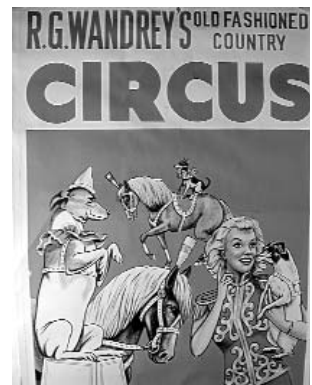
615. Colorado. Teller. Cripple Creek. **Victor High School Archive, c.1920.** Lot of about 100 pcs. Ranging from correspondence between Francis Clark and "Nancy", a high school memory book, and photographs, to over 30 newspaper clippings, and a county fair program. Some of the correspondence between Francis and Nancy describes the "scandal" at Victor High. A matinee program features an acting company and show, "the Honeymoon". All are circa 1920 and in varying condition. \$75

616. Colorado. Teller. Cripple Creek. **Vindicator Mine Level Maps.** Lot of 6 maps. Sheets 1, 2, 3, 4, 6, 20. Sheet 1 is the first level, 10,152 feet. Shows only the near surface underground workings. Sheet 2 is the 3rd level, elevation 10,015 feet. Sheet 3 is the 200 level, elevation 9909 feet. Sheet 4 is the 6th level, elevation 9855 feet. Sheet 6 is the 400 level, elevation 9715 feet. Sheet 20 is the 100 level, 10,094 feet. The maps are 12 x 42", undated, blue lines. All have a stamp of "Feb 46". This may indicate that these are from 1946, but not sure. Tattered in places, but are working copies. \$150

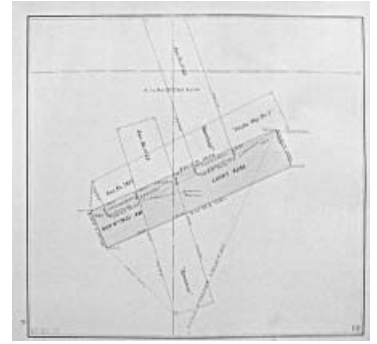


617. Colorado. Teller. Cripple Creek. **Walter Lode Title Abstract & Maps, c.1896.** The abstract dates from 1895-1896, 8.5 x 17". The two maps are c.1895, and are drawn on waxed cloth. Maps are discolored from water damage, but still in excellent condition. 12.5 x 16.5". \$100

618. Colorado. Teller. Cripple Creek. **Wandry's Old Fashioned Country Circus Posters, c.1930-40.** Lot of 5 posters. One is a site specific poster for Cripple Creek, advertising the circus in Red. Two (copies) full color litho posters of monkeys on high wire; (2 copies) color litho poster of lady with dogs doing tricks. Printed by Globe Poster Co., Chicago. Crisp color. Minor edge wear. \$450



619. Colorado. Teller. Cripple Creek. **Wilson Creek Cons Mining & Milling Co Maps, c.1900.** *Composite Plats Illustrative of the Condition and Title of the Property of the Wilson Creek Cons Mining & Milling Co.* Formal, bound Map Set. Preparer's name and date is no longer visible. Cloth cover sheet with ornate border. 50 pp. 16 x 18", bound by leather strips at left. There are pages listing/indexing the mining patents, with hand colored maps of patents showing Wilson ownership. In Hills, 1900, the Wilson Creek Cons GMC owned property next to, and within, the town of Independence. The company was in litigation with the Independence Town & Mining Co which probably led to the name change. Some water stains, cover poor, but otherwise fine. \$250



620. Colorado. Teller. Cripple Creek. **Woods Investment Co Victor Claim Map, c.1900** by Charles Shop, M.E. 40" x 60", reverse blue-line. The map shows the surveyed mining claims and the holdings of the Woods Co. Has fold horizontally at center, and prominent tear, vertically, from fold to top of map, in center. Needs repair. Also a few tears at the top edge, in the margin. \$100

621. Colorado. Teller. Cripple Creek. **Zanesville Gold Mining Co, 1901. Prospectus.** Incorporated in Colorado. Property was located 1 mile from the southwest corner of the town of Cripple Creek, on Gold Quartz Hill, just a 15 minutes walk from the post office. The company even claims, that as the town grows, the surface ground will be valuable. An advertisement prospectus with limited information. Minor dings at left edge, 6 x 9". Very fine. \$50



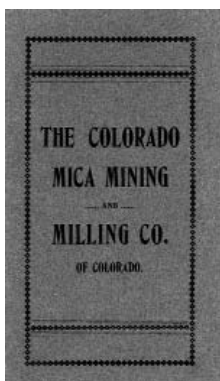
622. Colorado. Teller. Goldfield. **Goldfield Lodge A.O.U.W Medal.** Ancient Order of United Workmen Medal, "Instituted June 14, 1899." 51mm, Fine/Vf, 15mm chip at left. \$75

623. Colorado. Teller. Victor. **Mrs. Victor C. Adams Calling Cards, c.1895.** Four calling cards. Black script print on white card stock. 2 x 3. Victor C. Adams was the original homesteader of property that was platted for the Lawrence townsite by M. S. Reynolds on January 4, 1892. J. R. McKinnie, who owned the Mount Rosa Placer group of claims up-slope from the homestead, took note of this activity and seeing potential for profit, shifted the location of his claim group down-slope, abutting the Lawrence, to take advantage of ground more favorable for development. Like dominoes, owners of adjacent claims upslope from the Mount Rosa also perceived an opportunity and shifted their locations, covering former Mount Rosa ground. In so doing, they inadvertently opened a fraction of ground that was soon staked by J. Burns and J. Doyle and named the Portland. The Portland mine came to be the largest producer at Cripple Creek, grossing more than \$60 million. In 1893 McKinnie sold the Mount Rosa to Frank and Harry Woods who subdivided the property for a townsite they named Victor after Mr. Adams (see biographical sketches on McKinnie and the Woods family at the beginning of the Cripple Creek section) (Sprague, pp. 117, 118, 165). Very fine. \$80



624. Colorado. Teller. Victor. **S. A. Worcester, Consulting Mechanical Engineers. Label: Complements of S. A. Worcester Consulting Mechanical Engineers.** Designer & Constructor of Mining Plants and Reduction Works. Appears to be on blueprint paper and was probably affixed to plans and documents and complementary items provided by the company. Has illustration of hoisting works in blueprint form. 3 x 6. This company had offices in Victor and provided technical expertise for mining companies needing engineering services during the development of their properties. (Ives, p. 348, 420). Fine. \$15

625. Colorado. Teller. Victor. **Scholtz & McClellan Medicine Bottle, c.1900.** Scholtz & McClellan / Druggists / Cor 4th St & Victor Ave / Victor, Colo. About 3 oz. 5" tall. Some staining. No chips. \$28



626. Colorado. Teller/Fremont. Bare Hills. **Colorado Mica Mining & Milling Co of Colorado, c.1900-1905.** Prospectus. 8pp plus green cover, 3 x 6", Colorado incorporation. Duluth, Minn. Promotion. They held three claims. With reports of mica selling for \$600 to \$32,000 per ton, it isn't a wonder that someone began prospecting for mica. XF. \$75

