

2702. Scales. **Hanson Hanging scale.** 40lb capacity, with dial face weight to 20 lbs. Large tin basin. Est. \$50-100



2703. Scales. **Spring Scale Collection, c. 1900-20.** Lot of 8. One Landers with a 100lb capacity; 125 lb. Capacity, by Chitillon; 50lb capacity, by Chitillon; Landers 50lb capacity; Chatillon 50 lb capacity; Excelsior 50 lb capacity; Chatillon 50 lb. Capacity; Chatillon, 1899, 50 lb capacity. Est. \$100-300



2704. Scales. **Lander, Frank, Clark Scale, c. 1880.** Spring Scale. Cast Iron shell. Landers, Frank & Clark. 200 lb capacity. Est. \$50-100



2705. Scales. **Cast Iron Scale, c.1880,** with 200 pound capacity. This scale is shaped like a ski, with a raised pointed nose. One would put the item in this area and slide the weight to the corresponding slot. Very neat item. Est. \$100-300

2706. Scales. **Brass Scale.** Scale to weigh one pound. Manufactured by Rueben Sutcliffe of Manchester. Solid brass, 1 1/2' tall scale, with two different trays. One is more of a bowl, the other is platter-like. Mounted on oak base. Includes 1lb. weight. Est. \$100-200



2707. No Lot.

2708. Scales. **Commercial Scale.** Large Quiz Question Human weight Scale. Very cool piece which not only gives your weight, but for a small fee, also answers your wildest questions and dreams. Mirror at top. Yellow and chrome with deco lines. Made by Watling Scale Co. 5' 5" x 2'. Used in Nevada, c.1940-60. Est. \$300-600



2709. No Lot.

2710. Scale. **Wood Guitar Miner's Scale Case, c. 1870.** Est. \$25-50

2711. Scale. American Cutlery **Table Top Scale, 1912.** 10x10x8 inches. Est. \$50-75



2712. Scale. **Early Crude Hanging Balances.** Lot of 2 pcs. One with 14" beam and one with 8" beam. c. 1870. No mfg shown. Est. \$50-100



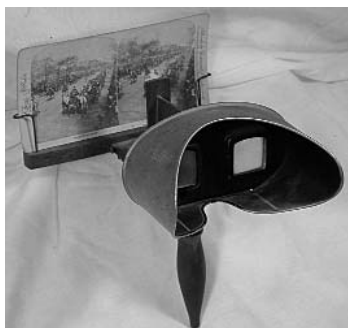
Lot 2711 and 2710



2713. Scale. **Pocket Spring Scale, 1904.** 16 pound capacity, 4" long. Est. \$25-50



STEREO VIEWS AND VIEWERS



2714. Stereo Views. **Stereocard viewer by Underwood & Underwood.** Black painted brass and oak, pat. 1901. 1' tall viewing device, mounted on wood panel. Est. \$75-150

2715. Stereo Views. **Stereocard viewer by Under wood & Underwood.** Oak and brass construction, pat. 1881 & 1901. Handle folds flat, includes a stereocard. Est. \$75-150



2716. Stereo Views. **Commercial coin operated, free standing stereo viewer.** For 5 cents you could view 1 out of about 100 stereo cards. 1916. 4' tall. Has been repainted red. Probably 50-100 stereo cards contained inside. Three are displayed on a vertical plaquard. Very nice. Est. \$500-1000



Lot 2717 and 2718



2717. Stereo Views. **Group of 62 stereo cards,** by various publishers, including Underwood, Ingersoll, Ross and others. Views are foreign and domestic and are in varying condition. Est. \$75-150

2718. Stereo Views. **Washington DC stereo cards.** Lot of 16 cards, with varying dates and publishers, including Universal View, Jarvis, Underwood and Littleton View. Views include President Cleveland, McKinley, and interior views of the president's house. Varying condition. Est. \$150-300



2719. Stereo Views. **Two stereo cards of Ouray, CO,** by Universal View Co. One is a mine scene, and the other a miner's camp. Undated. Fine. Est. \$50-100

2720. Stereo Views. **Spanish-American and Civil War stereo cards.** Four views, by Davis, Raw, Underwood, and others. Good condition. Est. \$50-100



2721. Stereo Views. **Three stereo views of Yosemite,** by Watkins, No.1155., Kilburn, No.954, and Littleton, No. 857. Good. Est. \$100-200



2722. Stereo Views. **Stereo view of an Underground Mining scene.** By Nielson, Johannesburg. Underground view of the Crown Mine. Est. \$25-50



2723. Stereo Views. **Clipper Ship and Niagara Falls.** Two stereos. Clipper ship at Cork Harbor, Ireland, by Underwood, and a nice view of Niagara Falls, by c. Bierstadt. Est. \$25-75



2724. Stereo Views. **Stereo view of African American Party Scene.** C.1870. "447a A Cake Walk". No photographer shown. Image is fine, but card missing lower left corner. Est. \$25-50



2725. Stereo Views. **Single Stereo view of an underground cave** with spectacular stalactite and stalagmite formations. XF. Unlabeled, CA(?). Est. \$25-50

TELEPHONE & TELEGRAPH

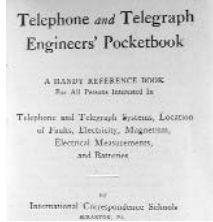
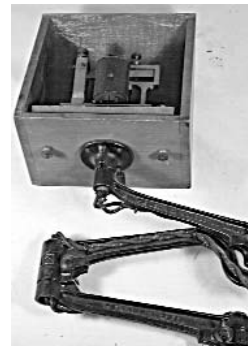
2726. Telephone. **Bakelite Ear Piece.** Oak telephone, bedside, hotel room, deep oak with Bakelite ear piece, 8"x3"x2". Extremely Fine. Est. \$50-150



2727. Telephone. **Blue Bell Batteries (3) with Original Bag.** Canvas bag containing three original Blue Bell Batteries for Oak Wall Telephones. Picture of Phone on bag. Original Bag. 9"x9"x3". Very Fine. Est. \$25-50



2728. Telephone. **Telegraph Sound Box.** Sound box for telegrapher, from Virginia City. c. White Co., Worcester, Mass. Complete with bracket for mounting. 18"x11"x5". Extremely fine. Est. \$500-1000



2729.Telephone. **Telephone & Telegraph Pocketbook.** Telephone and telegraph engineer's pocketbook, 1908, by International Correspondence Schools, Scranton, PA. Hard bound, approx. 400pp. Near Mint. Brown borders, with gilt title on cover and spine. Page edges at top are also in gold gilt. 2 x 1 inches. Est. \$50-150

Partial.

2730. Telephone. Wall Mounted Oak Telephone.

Oak Telephone by Kellogg. Beautiful oak cabinet. Directory platform present. Extremely Fine, something appears to be missing near hand crank. 13 x 5 x5 inches. Extremely Fine Est. \$300-500



Lot 2731 and 2732

2731. Telephone. Two Field Telephones. Telegraph signal key. Leather carrying case with telephone mechanism inside. Unmarked. c. 1900. 12"x8"x4". Very fine. Est. \$150-350

2732. Telephone. Kellogg 1901 Small Wall Mounted Telephone. Hand Crank phone. Original oak box with detachable ear piece. 10"x9"x11". Est. \$200-400

2733. Telephone. Kellogg 1901 Small Wall Mounted Telephone. Illinois Electric Company Telephone. Oak box telephone with detachable ear piece. 11"x7"x7". Est. \$150-300

2734. Telephone. Old Western Electric Candlestick Telephone with detachable earpiece, c.1925-35. 12"x7"x7". Est. \$75-150

2735. Telephone. Radio Telephone Set. Manufactured by Lee Electric and Mfg. Co. of San Francisco. In original oak box, with hinged lid. Complete with earphones for receiving, c. 1930-1940. 5"x5"x3". Est. \$50-150



Lot 2734 and 2735

2736. Telephone. Mine Telephone, Western Electric.

Die cast iron with mounting pieces attached to the bottom. Made in the Western Electric. Would have been mounted on a wall. Door opens on a hinge and the ear and mouthpieces are attached. 16"x13"x10". Est. \$100-200



Example of Mine Telephone.

2737. Telephone. Mine Telephone. Die cast iron with mounting pieces attached to the bottom. Made by Stromberg-Carlson, Rochester. Would have been mounted on a wall. Door opens on a hinge and the ear and mouthpieces are located. This one has a handle with which to operate. 14"x11"x13". Est. \$100-200

2738. Telephone. Telephone Instruction Booklets. Pacific Telephone & Telegraph company, c. 1924. Two manuals for design of telephone fixtures within buildings (Pamphlet). No photo available. Est. \$50-150

2739. Telephone. Telephone Catalog. S.H. Couch Company. Catalog for telephone systems, Bulletin No. 80 with March, 1925 date imprinted. No photo available. Est. \$50-150

2740. Telephone. Telephone Bell & Electric Works. Wooden telephone ringer mechanism. Only ringer mechanism present. 7"x7"x5". Est. \$50-150

2741. Telephone. Bell Telephone In Red Box. Red metal casing with phone inside. 13"x9"x6". Est. \$50-150



2742. Telephone. Telephone Electric Box. Electrical conductor with wood casing. Right hand side crank causes mechanism to power up. 9"x10"x6". Est. \$50-150

2743. Telephone. Public Telephone Bell System metal sign. Has significant rust. 12"x12"x2". Est. \$150-300

2744. No lot.



Lot 2742 and 2743