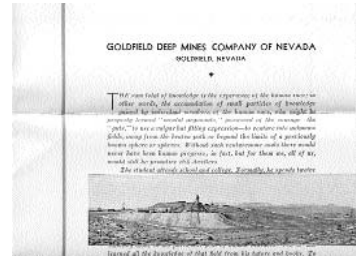


2085. Esmeralda. Divide. Mining Company Prospectuses from the **Reorganized Victory Divide MC (2)** and the **Goldfield Deep MC of Nevada.** Goldfield Deep prospectus has fancy layout, with two pictures of the mine/site and one of miners. Xf. The Reorganized Victory was a reorganization of the Victory Divide MC on an assessable basis. The Goldfield Deep MC of Nevada was formed to combine a number of properties at Goldfield for the sole purpose of deep development. The purpose was to acquire a large area on which to explore the vein system, for future deep mining. (Ref: Rand & Sturgis, 1931, p.1463). Est. \$25-75



2086. Esmeralda. Divide. Mutual Divide of Massachusetts. Unincorporated. Issued to Louis Berger for 100 shares in 1922. Signed by treas. George L. Elcue. Bald eagle vignette, red border and safety print. Printer – John A. Lowell Bank Note Co. 11 1/2 x 8 1/2. Uncancelled, not among the active Divide companies listed for 1919 in Weed. Rare. XF. Est \$35-75

2087. Esmeralda. Divide. New Tonopah Dividend MC. Cert.#417. Incorporated in Nevada in 1921. Issued to V. Hixson for 1000 shares in 1921. Signed by J.R. Cunningham as president. Vignette of mining operations on hillside. Brown border and gilt seal. Printed by Goes. Vf, blue ink blotch at left edge. 5 1/2” x 10”. Was a reorganization of the Tonopah Dividend MC in 1921. It was made up of 6 claims, over 85 acres, adjoining Tonopah Divide on the North and Divide Extension north and east in Gold Mountain. Litigation with the Midway Divide threatened the company, but was adjusted in 1919. (Ref: Weed, 1924, p.1139). Est. \$25-50



2088. Esmeralda. Divide. Oriental GMC. Cert.#A2586. Incorporated in New York. Issued to C.F. Martin for 50 shares in 1881. Signed by vice-president Wm. McCaulley and secretary D. Yendenal. Uncancelled. Vignette of miner on hillside, leaning on a pick. The brown border reveals a female allegorical figure. *Location of Mine, Gold Mountain District, Esmeralda Co., Nevada* printed at bottom of certificate. Dated New York. Printer – ABN. Not to be confused with the other Gold Mountain District at the Divide between Goldfield and Tonopah. This district was discovered in 1866, but saw no appreciable work until rich ore was found at the Oriental mine in 1871. The mine is located in a very isolated locale, on the western border of the state and partly into Inyo County, California, not really near anything in the 1870’s. Hence the first mill there was an arrastra. Concentrates were hauled all the way to Austin and Belmont, which took two to three days each way to get there. District production was estimated at \$500,000 through the 1920’s, mostly from this mine. (Ref: Lincoln)7” x 10 3/4”. Xf. Est. \$150-300



2089. Esmeralda. Divide. Oriental GMC. Incorporated in New York. Cert. #A2207, issued to F.A. Brown for 50 shares in 1881. Signed by president Wm. M. Caulley and secretary D. Yendenal. Vignette at top left of prospector standing in front of rocky hillside, leaning on pick with pan on his far side. Allegorical figure in border on right side. Brown border and black print. 7 1/4 x 11. Uncancelled. See lot above for the story. Extremely fine. Est. \$150-250



2090. Esmeralda. Divide. Reco Divide MC. Cert.#26. Incorporated in Nevada in 1919. Issued to W.C. Ralston for 1000 shares in 1919. Signed by president J. B Kendall and asst. secretary L. O’Neill. Vignette of bald eagle atop American Flag. Orange border and seal. Printed by Mysell Rollin s Co. 8/4” x 10 3/4”. Vf, creases. Consisting of 5 claims north of the Sutherland Divide, the Reco showed 14,000 tons of \$18.05 ore, calculated at \$1.10 per oz for silver. Shipment to smelters was to begin in 1919. (Ref: Weed, 1920, p.1155). Est. \$25-50

2091. Esmeralda. Divide. Reorganized Silver King Divide MC. Cert.#547. Incorporated in Nevada in 1921. Issued to Strong Stiergis & Co. for 100 shares in 1921. Signed by president J. Berger and secretary W.E. MacPhert. Vignette of a mine operation on a river’s edge, with two smaller vignettes of men filling ore cars on either side. Green border and seal. Printed by Goes. 8 1/4” x 11”. Xf. Consisted of three claims in the Divide district. They also had control of 11 other claims in Washoe County, 27 miles NW of Reno and a few miles from Plumas Junction, CA. The assayed gold and silver ore production was at \$27 per ton. (Ref: Weed, 1924, p.1466). Est. \$25-50



2092. Esmeralda. Divide. Royal Divide MC. Cert.#940. Incorporated in Nevada in 1919. Issued to Chas. M. Schmidt for 100 shares in 1919. Signed by president J. Joseph and secretary Otto Falk. Profile vignette of a capped woman. Black border, with gilt underprint and seal. Printed by Goes. 5 1/2” x 9 3/4”. Xf. They were stricken from the NY Stock Exchange in 1923 for unexplained circumstances. It consisted of the Ford group and others, 13 claims total, but the development was reported as slight. (Ref: Weed, 1924, pp.1475-76). Est. \$25-50



2093. Esmeralda. Divide. **Silver King Divide Mining Co.** Incorporated in Nevada, 1919. Issued to W. E. Colburn for 1000 shares, cert #407, in 1919. Signed by Charles Baad vice president and W. E. Colburn secretary. Vignette at top center of several miners working underground with vignettes at top corners of miners inspecting ore and panning. Black border with gilt seal and gold safety print. Uncancelled. Printer - GOES. 5.5 x 10. Two holes from two ring binder at left edge with a tear in the lower hole. Paper clip rust stain at left edge. The company owned three claims and 40 acres adjoining the Mecca and Hasbrouck Extension. In 1920, there was a 200 foot and was pulling \$12/ton ore (Mines Handbook, 1920, p. 1158). By 1921, the company was reorganized by assessment becoming the Reorganized Silver King Divide MC and acquiring all new directors. This successor company went on to acquire property across Nevada and California, including claims in the Weepah and Peavine districts and a mine outside Trona, CA. All these properties were idle by 1927 (Mines Handbook, 1930, p. 652-53). Very fine. Est. \$25-75



2094. Esmeralda. Divide. **Sioux Divide.** Inc. in DE, 1919. Issued to A. Ninnis for 1000 shares in 1919. Signed by pres. John B. Shanahan and treas. O. Viking Hedberg. Vignette of bald eagle, green border and seal. Printer - Broun-Green. 11 x 8. XF. Uncancelled, not among the active Divide companies listed for 1919 in Weed. Rare. Est. \$35-75

2095. Esmeralda. Divide. **State Line GMC No. 1.** Inc. in NY, 1881. Cert #A2829, issued to Louis Garth, Jr. for 50 shares in 1881. Signed by pres. Lee R. Shryrock and sec. D. Yudenal. Unique-looking and attractive certificate with a vignette at the left of two travelers sharing a light for



their pipes. Black border and print. "Location of Mine, Gold Mountain District, Esmeralda County, Nevada" printed on certificate. Dated New York. Printer - ABN. 11 x 7. Uncancelled. Folds, very fine. In 1881 the State Line mine was reported by Burchard as the principal mine. Burchard, however, was unaware that a group of New Yorkers, headed by Shryver and Yerdenal floated at least five different public companies on the same properties- State Line No.'s 1-3 and Oriental No.'s 1-3. The various companies' data had been intertwined, giving the appearance of each doing well. (Ref: Burchard, Lincoln, Lida 1:125,000 1913 quad, Ball) This cert is much rarer than the No. 3 cert.. Est. 200-400



2096. Esmeralda. Divide. **State Line GMC No. 3.** Inc. in NY. Cert. #A3109, issued to F.A. Brown for 50 shares in 1881. Signed by president Lee R. Shryock (?) and secretary D. Yendenal. Vignette of miners prying boulders and drilling underground. Dark orange border with black print. Location of Mine, Gold Mountain District, Esmeralda County, Nevada printed on certificate. Orange border. Dated New York. Printer - ABN. 7 1/4 x 10 1/2. Uncancelled. Many staple holes at upper left side and small, ink from reverse has bled through to face of certificate on right side. In 1881 the State Line mine was reported by Burchard as the principal mine. Burchard, however, was unaware that a group of New Yorkers, headed by Shryver and Yerdenal floated at least five different public companies on the same properties- State Line No.'s 1-3 and

Oriental No.'s 1-3. The various companies' data had been intertwined, giving the appearance of each doing well. (Ref: Burchard, Lincoln, Lida 1:125,000 1913 quad, Ball) scarce. Est. \$150-250

2097. Esmeralda. Divide. **State Line GMC No.3.** Cert.#A5106. Incorporated in New York. Issued to Watson & Gibson for 50 shares in 1882. Signed by vice-president Leo R. Shryock and secretary D. Yendenal. Uncancelled. Vignette of four men in underground mining scene. Orange border. Printed by the American Bank Note Co. Dated New York. 7" x 10". Xf. See lot above for the story. Est. \$75-150

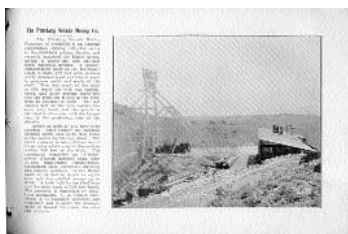


2098. Esmeralda. Divide. **Thomson Divide MC.** Cert.#1864. Issued to Frank Donaldson for 42 shares in 1919. Signed by 2nd vice-president Douglass and secretary J.A. Mathews. Vignette of mill operations on hillside. Brown border and gilt seal. Printed by Goes. 5 3/4" x 10". The property consisted of 7 claims, spread over 90 acres, adjoining Belcher Extension and others. Est. \$25-50

2099. Esmeralda. Divide. **Tonopah Hasbrouck Mining Co.** Incorporated in Nevada 1918. Issued to R. M. Brin for 500 shares, cert #1325, in 1919. Signed by Jno A. Kernick president and Boyd Lundsden secretary. Vignette at top center of a mill next to a stream with smaller vignettes to left and right of miners working underground. Black border with gilt seal and gold safety print. Uncancelled. Printer - Goes. 6 x 11. The company owned 6 claims that included the Hasbrouck mine on Gold Mountain within the Divide district. In 1922, the property was leased out until they uncovered a rich ore vein and the company took over the operation again. (Mines Handbook, 1925, p.1513). Three adhesive dividend stubs on reverse. Very fine. Est. \$25-50



2100. Esmeralda. Divide. **Trail Canyon MC.** Lot of 2. Cert.#168, 111. Incorporated in So. Dakota in 1906. Both issued to Sidney Tyler, one for 100 and the other for 1000 shares in 1907. **Signed by Tasker Oddie** as president and J. Cookson as secretary. Bald eagle vignette. Green and brown borders. Printer - Security Bank Note Co., Philadelphia., We could not determine exactly if this mine was in the old Gold Mountain District, or the Divide District. Our supposition is that it is the Divide, because Oddie was so involved with the development of mines at Tonopah. Oddie was one of three key figures at the discovery of Tonopah by Jim Butler. Butler approached Oddie about his discovery, made him a partner, and Oddie went on to make a fortune. Along the way, he was involved as a banker, Governor, and two term US Senator from Nevada. Oddie came from New York, where his father was a broker for Turner & Co. After the discovery of Tonopah, as a lawyer, he was made president of the Tonopah Mining Co., the largest silver producer in the camp at that time. Though it is not discussed much, Oddie and Wingfield were fierce competitors but close friends, according to Wingfield's biographer Sally Zanjani. It was Oddie that appointed Wingfield to fill Nixon's Senate seat in Washington after Nixon's sudden unexpected death in 1912. But Wingfield declined because he thought he could not help the state in the political process, but could be a substantial contributor in the economic process. He was right. Thus when Oddie ran for the Senate, Wingfield was the man primarily responsible for getting him there. The favor was returned. The two became inseparable political allies. (Ref: Zanjani, Myles, Kleinhampl & Ziony, Albers & Stewart, Lincoln, Tingley, various USGS quads). 8 x 12. Extremely fine. Est. \$100-200



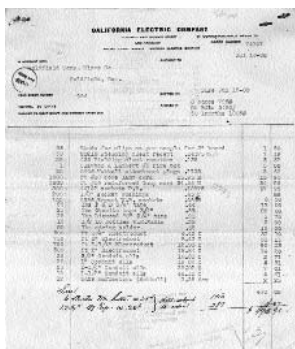
2101. Esmeralda. Goldfield. **American Mining Congress Souvenir, 1909.** A souvenir for the attendees of the American Mining Congress held in Goldfield. There are many photographs of the major mines of Goldfield, Tonopah, Jamestown and even the National. There are write-ups on the various mining districts, including Bullfrog, Manhattan, Goldfield etc. George Wingfield persuaded the Congress to hold its meeting in Goldfield. It was his intent to boost up the falling interest in mining investments and also to promote his own company, Goldfield Consolidated Mines co. Wingfield tied up the Mohawk and all the rich mines in Goldfield district to form the company then built the largest gold mill ever constructed located at the base of Columbia Mountain (pictured in the book). Wingfield went through tough times with the mine at first due to the mistrust in western mining company promotions. Eventually, Wingfield's patience and smart business sense rewarded him with his mines going on to produce 8 million ounces of gold, the richest gold deposit in the world at that time. There are three hole punches at left for a binder, the holes are worn. Very fine. Est. \$150-300

2102. Esmeralda. Goldfield. **Antelope MC.** Cert.#227. Incorporated in Nevada in 1912. Issued to Miss Alice A. Schwartz for 50 shares in 1930. Uncancelled. Signed by vice-president J.W. Howard and secretary G.B. Doyle. Central vignette of a road leading to a mining camp, flanked by two smaller vignettes of underground mining scenes. Gilt border, underprint and seal. 8 1/2" x 11". Fine, tears at folds. As a subsidiary of the National Merger GMC, the Antelope consisted of 3 claims, including the Antelope Mine, originally discovered by Frank Reilly and the Jordan brothers. According to the 1931 *Mines Hdbk*, good ore had been reported in the shaft workings and that the results constituted further development. (Ref: Rand Sturgis, 1931, pp.1372-73). Est. \$50-75



2103. Esmeralda. Goldfield. **Atlanta MC.** Cert.#9267. Incorporated in Arizona. Issued to Chas. A. Stoneham for 100 shares in 1912. Signed by 2nd vice-president J.S. Henderson and secretary Howe. Vignette of a turtle in each corner of the green border. Printed by the Western Bank Not & Engraving Co. The Atlanta group of claims includes the Atlanta Union, Black Bear and Bismarck claims, which lie directly east of the Florence-Goldfield Mining Company's ground. Three shafts were sunk at 200', 300' and 500' deep, but with little lateral development. (Ref: Ransome, 1909). 7 3/4" x 10 1/2". Xf, folds. Est. \$25-50

2104. Esmeralda. Goldfield. **Baltimore Belle MC.** Cert.#228. Incorporated in Nevada in 1907. Issued to W. Calvin Chestnut for 1000 shares in 1909. Uncancelled. Signed by president M.K. Robinson and secretary J.E. Wilson. Vignette of a mill and mine at a river's edge, with two small vignettes of underground mining scenes at either side. Black border and gilt seal. Printed by Goes. 5 1/2" x 10". Vf, dark spots at top edge, and two hole punches at left margin. The Baltimore claims are shown on Shearer's 1905 map, 3 miles north of the town of Goldfield, one of the 140 companies active at the beginning of the Goldfield boom. Est. \$25-75



2105. No Lot.

2106. Esmeralda. Goldfield. **California Electric Co Purchase Orders, 1908.** Lot of Lot of 5 pcs. The California Electric Co is famous for their embossed insulators. The **Goldfield Cons Mines Co** must have liked their product also, for all of these receipts are for that company. Very fine. Est. \$50-100