

2604. Kitchen. Two Primitive Wood Handled Devices. One is a Briddell Puncturing Device and the other is a crude meat hammer. Est. \$50-75

2605. Kitchen. Primitive Cherry Pitter by New Standard Cora. Table mounted, c. 1900. Est. \$50-150



2606. Kitchen. Original Nickel Plated Champion Tabletop commercial corkscrew. These are reproduced today for sale in fine wine shops for \$150. This one is complete with wooden handle and spring loaded clamps. Est. \$100-200



2607. Kitchen. Three Primitive Flat Irons & Owl Trivet. Cast iron black c. 1860-1900. Est. \$100-200



2608. Kitchen. Primitive Steam Iron by Marka. Cast iron with wood handle and a cotter pin hinged top. No photo available. Est. \$50-150

2609. Kitchen. Early Hot Point Electric Iron, c. 1925. Wood Handle. Est. \$25-50

Lot 2609 and 2608, respectively

2610. Kitchen. Primitive Kitchen Gadgets & Gizmos. Lot of 9. Ice Scraper, Wire Spatula, Enamel Funnel, two wood baking gadgets, copper teapot, three gizmos. Est. \$25-50



Lot 2611 and 2612

2611. Auto (Oops). Shell Oil Can, 5 gal. with locking cap. C.1920-30. Yellow paint. Est. \$50-100.

2612. Kitchen. Group of primitive iron kitchen pots. Four pots, ranging from 8" diam. To 14". All probably 1820-1880. Est. \$100-300

LOCKS



2613. Locks. RR Locks. Lot of two. Circa 1950. Adlake. Both say SPT Co on back, which means Southern Pacific Transportation Co. Est. \$50-100

2614. Locks. Set of old jail keys. Six total. c. 1800-1900. Est. \$50-100

2615. Locks. Leg Irons. Locking leg irons with connection chain. C.1860, Civil

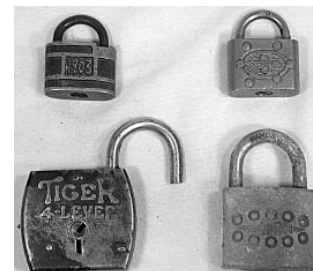
War. 21"x5". Est. \$200-400



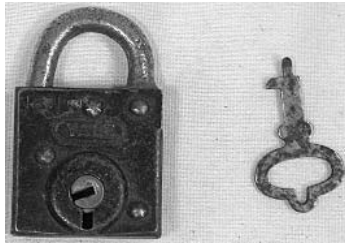
2616. Locks. Lock Collection. Lot of 6 locks. Old tarnished lock collection. Odd shapes and sizes. Various conditions. Est. \$50-100

2617. Locks. Railroad Lock. M.W. Co. Railroad lock with key. Iron cast lock with key some tarnish on lock and key. 3 1/2"x3". Est. \$50-100

2618. Locks. Lock Collection. Lot of 4 locks. BILT-RITE lock; Tiger 4-Lever lock; IXL lock; S with arrow icon lock. Various conditions. Est. \$25-75



2619. Locks. Tonopah & Goldfield Railroad mail bag lock. Rust in various places on lock. 4 1/2". Est. \$100-300

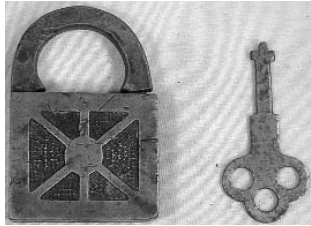


2620. Locks. Early Yale lock with key. Very small lock with tarnished areas. 2"x1"x1/4". Est. \$25-50

2621. Locks. Eagle heavy duty brass lock. Apparent rust spots but lock is still very strong. 3 1/2"x2 1/2"x1". Est. \$25-50

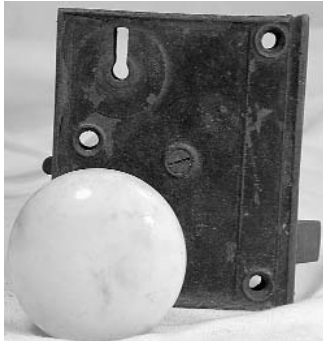


Lot 2620 and 2621, respectively.



2623. Locks. Brass lock with key. No manufacturer shown on lock. 2 1/2"x1 3/4". Est. \$25-50

2624. Locks. U.S. mailbag lock. Shaped like a vice with a pull down piece. 5 1/2"x2 1/2". Est. \$25-75



2625. Locks.. Odd lock & brass tag, both have chain link extensions attached to them. "C.M. Franklin Serum Co." probably based in Los Angeles. C. 1920-1930 26"x2". Est. \$25-50

2626. Locks. Door knob set with lock. White knobs and tarnished iron lock mechanism. c. 1890-1910. 4"x3 1/2" x 6". Est. \$20-40

2627. Locks. RR Lock. AT&Sry. Adlake. The AT&SRy is stamped on the Back. Est. \$50-150



2628. Locks. Civil War Era locking wrist locks, with key. Est. \$200-400

MEDICAL

2629. Medical. Home Medical Apparatus. Circa 1900, in wood box. Meant for electric shock treatment. Bottom opens for additional battery, not present. Est. \$50-100



2630. Medical. Remedy Machine. Cure-all/home remedy machine in rosewood box, with original label, 4"x4"x 10-12". Lid opens. In good and working condition. "Davis & Kidder's Patent Magneto Electric Machine, For Nervous Diseases", lots of fine print. Patented 1859. Est. \$150-300



2631. Medical. Medical Piece. Oxygen Opathy device. In original box, C.1910. Est. \$50-150

MISCELLANEOUS



2632. Misc. School House Teaching Aid. Early illustrated K-1st grade aid. c. 1900. 36x44", 10 pp, rolled on wood spool. c. 1900. Est. \$100-200

2633. Misc. Possible Voting device(?). Hardwood, incomplete, missing back doors. 5 holes at top and about 10" square. No photo. Est. \$25-50

