

1865. Lumpkin. Dahlonega. **Etowah Gold Mining Co.** Incorporated in Georgia. Issued to Wm Thomas for 100 shares, cert #121, in 1906. Signed by E. L. Thomas treasurer with no president signature. Three different vignettes of different scenes of a complex conveyor belt system from the mine to the mill. Brown border and underprint. Cancelled by rubber stamp over president's signature line. Fold crease at upper right corner. Minor wrinkling at lower left corner. Extremely fine. Est. \$200-400



1866. Lumpkin. Dahlonega. **Georgia Mining & Mfg. Co.** Inc. in NY, 1881. Unissued, no cert. #. Vignette at top of miners filling an ore bucket. Small vignette at lower right of three pillars, soldier and Constitution across the top. Dated New York, 188x. Black border and print. Printer – Grogan & Murtha, NY. 11 x 7 1/2. A few wrinkles along top, small chip too. Very fine. The Georgia gold rush began about 1828, and continued until about 1835, and on and off since that time. It did show the country that gold could be found, and created a batch of Georgia miners who ventured west to find their fortunes, among them Green Russell, the discoverer of gold in Colorado. Est. \$50-100

IDAHO

ADA



1867. Ada. Boise. **Columbia G&SMC.** Cert.#39. Incorporated in 1863. Issued to Wm. Abernathy for 10 shares in 1864. Signed by president Jno. Levakey(?) and secretary J..A. Davis. No vignette, but fancy print in masthead. 2 20 cent IRS Exchange stamps at left. **Location: Placer District, Boise County, Idaho Territory** printed on certificate. Xf. J. Ross Browne reports in 1867 that “The product of the placer mines in the Territory has been gradually diminishing for the past two years, though this falling off, if it have not already been, will soon be more than made up by the yield of quartz mines, which are beginning to

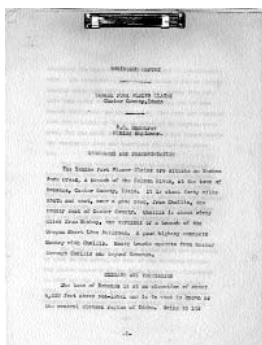
be worked quite extensively.” He also reports that the mines of Idaho are mainly of auriferous quartz, although there were several rich silver-bearing claims. Columbia Gulch, a settlement near Blackeagle Creek, was named for the Columbia Mining Company, which had holdings in this gulch. Perhaps this company was a successor or predecessor of this company. (Ref: *Min. Res. of the U.S.*, 1867, pp131-32; *Idaho Place Names*, 1988, p.88) Est. \$200-400

1868. Ada. Boise Basin. **McKinley GMC.** Incorporated in Arizona in 1907. Cert. #4758, issued to A.W. Owens for 200 shares in 1909. Uncancelled. Signed by sec. P. H. M. McKinley and pres. Anton McKinley. Vignette of female allegorical figure holding scale of justice, flanked by male and female allegorical figure. Brown border and safety print, with spread-winged bald eagle stretched across bottom border. Dated *Kansas City, Mo.* 8.5 x 10.25. Owned 700 acres on Jupiter Mountain in the Boise Basin of Ada County just 6 miles from Idaho City. By 1918, idle to due lack of funds. (*Mines Handbook*, 1918, p.744) Very fine. Est. \$25-50



CASSIA

1869. Cassia. **Juniper GMC.** Inc. in NY, 1882. Cert #408, issued to J.H. Crombie for 100 shares in 1883. Signed by pres. B.W. Gorham and sec. John R. Murphy Jr. Unusual vignette of sluice and hydraulic mining scene. Black border, gilt safety print. “Cassia County, Idaho Territory” printed on certificate. Dated New York. Printer – Collins & Cramm, NY. 10 1/2 x 6 1/2. Uncancelled. Tears at folds, professionally repaired by archival tape and small pieces of paper glue to reverse. Trimmed tight at left edge. Burchard, 1884-5 reported: “This county, lying east of Owyhee, is bounded on the north by the Snake River. ...its mining resources are confined to placers on the Snake river...operated by Chinese.” While this is not a Chinese venture that is at least evident, it provides interesting background on the district. Fine. Est. \$150-250



CUSTER

1870. Custer. Bonanza. **Yankee Fork Placer Claims Report, c. 1930** by R. H. Humphrey. Mr. Humphrey conducted an in depth study of the claims including an very informative historical background to placer mining in Idaho. He determined that about 7 million yards have an average of \$0.30/yard free gold. His recommendations are to proceed with procuring these claims and put the property into production as soon as possible. No date is offered for the report and the company for whom the report was prepared is not noted. 10 pages. Very fine. Est. \$20-40

1871. Custer. Robinson Bar. **Stanley Creek Geologic Report** by J. B. Newsom, 1926. J. B. Newsom was hired to conduct an economic viability of placer mining a parcel along Stanley Creek above the Stanley Basin within the Sawtooth Mountains of Idaho. The report is nine pages and very thorough and professional. His conclusion is that the property is not economic. The company for whom he prepared this report is not indicated. This lot contains two copies of the original report. 8.5 x 14, inside legal blue paper cover. Very fine. Est. \$20-40



Partial

IDAHO(?)



1872. Idaho(?) **Sunrise Mines Co. Inc.** in ID. Cert.#516, issued to Dorothy M. Stanton for 4038 shares in 1947. Signed by pres. D.D. Banco and sec. Frank R. Smith. Vignette at upper left of underground mining scene, six small vignettes of miners incorporated into border. Black border and print with gilt seal and safety print. Dated Wallace, Idaho. Printer – Empire Printing Co., Spokane. 11 x 8. Uncancelled. XF. Unable to find reference to this company in our library. Est. \$20-40

JOSEPH

1873. Joseph. **Hammon Engineering Co. Correspondence, 1941.** Lot of 4 pcs. David Turner is explaining placer claims that were located near the confluence of the Salmon and Snake Rivers in what today is informally known as the Riggins Valley. The claims appear to be near the base of the White Bird grade, which is a steep climb out of the valley on the infamous Camas prairie where Lewis & Clark were saved by the Nez Perce Indians. The letters claim that there is about 3 million yards with a \$0.53/yard value. There are two typewritten letters with the original manuscript copies. The Snake River in this steep walled canyon is now a popular white water rafting destination with minor mining operations. Hammon Engineering later became Hammon Consolidated Gold Fields, one of the most successful gold dredging operations of modern times in California. Later this company sold to Yuba Goldfields. Very fine. Est. \$25-50



LEMHI



1874. Lemhi. **Pine Creek MC. Inc.** in NJ, 1887. Cert #82, issued to John M. Erickson for 80 shares in 1887. Signed by pres. W.H. Elliott and treas. Wm. B. Wood. Vignette at top of two miners working underground; vignette at lower left side of cross-section of shaft. Black border and print. Gold seal. "Lemhi County, Idaho" printed below vignette at top. Dated Camden, NJ. Printer – W.H. Hoskins, Phila. 11 1/2 x 7 1/2. Uncancelled. Folds, several pinholes, very fine. Two miners discovered gold here (Pine Creek) in 1881 Sam James and Pat O'Hara were prospecting the local country and stumbled upon placer gold. A small camp arose. [ref: Boone, Idaho Place Names] Very attractive. Est. \$150-300

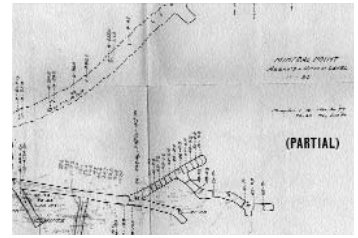
SHOSHONE

1875. Shoshone. Coeur d'Alene. **Tamarack & Custer Consol. MC. Inc.** in Nevada, 1913. Cert #841, issued to Marian H. Young for 500 shares in 1915. Signed by pres. J.J. Day and sec. H.L. Day. Vignette at top of miners working with power drills underground. Brown border and safety print. Dated Wallace, Idaho. 12 x 10. Cancelled. Folds, small tear and creases at top of right fold. Red, ten cent documentary stamp on reverse. The net profits for 1914 were \$187,063, for 1915, \$346,796, and for 1916, \$338,746. The company owned about 40 claims and fractions acquired from the old Tamarack and Chesapeake and Custer companies on Nine Mile Creek, Coeur d'Alene district, Shoshone County. The Hercules mine nearby was controlled by the same interests. The ore contained 9% lead and 7 oz. Silver, part direct smelting and part concentrating. Mill recovery was reported to be about 83% without flotation. The Tamarack & Custer, along with the Hercules interests, built and operated a lead smelter at Northport. It was reported that the gross ore reserves were about \$9,000,000. One ore shoot on the Leonard tunnel level was reported to have been proved for at least 1500' with ore on both faces. According to Weed, this company did not like to part with information about itself which resulted in some criticism. Early in 1917 the 500 ton Frisco mill at Gem was purchased from the Federal Mining Co. for \$150,000. The company also purchased the 8000' Hercules aerial tram, to which was added another 2 1/2 miles to connect the mill and mine. The company employed about 350 men and in July 1917, the mine produced 3,000 tons of crude ore and concentrate valued at \$150,000. In 1919, production was 14,121 tons with a gross value of \$1,044,753 and a net profit of \$221,429, as compared to 1920 production of 22,889 tons with a gross value of \$1,711,658 and a net profit of \$169,371. The company was idle in 1921 and part of 1922 and production in 1922 resulted in a net loss of \$66,161, but by 1923 it was back in the black with a net profit of \$380,049. The net profit from 1902 to 1928 was \$2,878,832. Rand and Sturgis commented in the 1931 *Mines Handbook*, "this company like the Hercules is controlled by the Day family and thus there was formerly some difficulty in getting direct information. A gradual change in this policy seems in progress. The development of the property has been pushed since 1925, perhaps due to the exhaustion of the Hercules mine. Until 1927 the development was not entirely encouraging but since that time the mine has taken a new lease on life, is increasing ore reserves and is a prominent producer. Shipping to Hercules mill will probably lower reduction costs." (*Mines Hdbk*, 1918, p804-05; 1925, p984; 1931, p1124-1126.) Est. \$25-50



Partial

1876. Shoshone. Osburn. **Coeur D'Alene Mines Corp. Mineral Point Mine Maps, 1930.** Lot of 3 pcs. Plan maps of the underground operations with assay data. Maps show the claim blocks. This company is not listed in the Mines Handbooks. Very fine. Est. \$25-75



1877. Shoshone. Silver Valley. **Snow Storm & Lucky Calumet Promotional Flyers, 1908-1909.** Lot of 28 pcs. Don Campbell & Co of Chicago was very active promoting the new copper mines of the "Coeur D'Alenes". The promotional pieces include excerpts from newspapers talking of the wealth made from these mines, the great jumps in stock value and testimonials from professors and geologists. Five of the pieces are in the form of newsletters of about 4 pages each. The other pieces are broadsides or mailers. Included are 12 pages of correspondence from Campbell & Co. Very fine. Est. \$100-200

1878. Shoshone. Silver Valley. **Stewart MC.** Incorporated in Idaho, 1902. Cert. #B33267, issued to Harry D. Williar for 100 shares in 1916. Signed by vp and sec, both signatures illegible. Holes punched at left margin, appear not to be cancellation holes. The Stewart mine was in the Kellogg area. In 1915 the geology was reported as very difficult, rendering mining difficult as well. The mine produced about 500 tons per day through about 1915. (Ref: Bell) Est. \$50-75



1879. Shoshone. Wallace. **Valentine MC, Ltd.** Inc. in ID, 1907. Cert #245, issued Ellen L. Brandt for 250 shares in 1917. Signed pres. J. Blang and sec. Otto Johnson. Unusual vignette at top left of a robed figure fighting a lion with his bare hands. Black border, gilt seal and safety/underprint. 11 x 8. Dated Wallace, ID. Printer - Goes. Uncancelled. XF. Unable to find reference to this company in our library. This is a major silver district. This company was probably a prospect. Est. \$25-50

1880. Shoshone. Wallace. **Western Union MC.** Lot of two certificates. Inc. in Idaho, 1916. Cert#1697 and 1701, both issued in 1921. One is signed by vp Erik Hagman, the other by pres. D.H. Anderson, both signed by sec. Benj. Collins. Vignette at top center of nine miners working underground. Two vignettes at either side of prospectors. Black border and print with gilt seal and safety print. One certificate has 8 red documentary stamps across the top, the other certificate has one. Both cancelled. Printer - Goes. 10 x 5 1/2. Fine. Good producing silver lead mine at Wallace. Obviously named after the famous telegraph company. Probably bought by the Bunker Hill. Est. \$25-50



1881. Shoshone. Wardner. **Caledonia MC.** Inc. in ID, 1907. Lot of two pcs: Cert#4363, 8571. Issued to various for various shares in 1915, 1916. Signed by pres. Stanly A. Easton and sec. Chas. McKinnis. Vignette of several miners working underground. Brown border and underprint with embossed seal. Both are cancelled by rubber stamp. 11 x 7. Very fine. The company owned 5 unpatented claims, about 50 acres adjoining the property of Bunker Hill and Sullivan MC at Kellogg. The property showed a strong fissure vein with an oreshoot 1000' long and 50' wide in places. It carried cupriferous silver-lead ore averaging 15 to 40 ox. Silver, with a little native copper. The mine was developed by a 500' shaft and two tunnels with the lower tunnel being 4000' in length. The 1000' level was reported to show 7' of shipping ore, though broken faulted ground was encountered. Reports from Feb. 1916 show a drift being run from the Keating level, 75' below the 1000' level to pick up the orebody.. The mine was in litigation and hence idle from 1912 to 1914 due to an apex rights battle with Bunker Hill & Sullivan. The two companies made a compromise with Bunker Hill & Sullivan taking 550,000 shares in the Caledonia. The company was virtually a subsidiary of Bunker Hill. The ore was treated at the mill of the Bunker Hill & Sullivan plan. The Caledonia employed about 35 men when active. The production in 1915 was 659,660 pounds of copper, 11,142,580 pounds of lead, 1,212,730 ounces of silver with a net profit of \$760,324. (*Mines Hdbk*, 1916, p292-93.) Est. \$25-75

THUNDER MOUNTAIN

1882. Thunder Mountain. **Thunder Mountain Eldorado Mining Co.** Incorporated in Washington 1902. Issued to Wm. E. Barnes for 400 shares, cert #78, in 1902. Signed by All Forman president and Joseph J. Cole secretary. Vignette of a woman standing who has wings, a woman is seated at her right holding a staff and a man seated at her left with parts of machines with the America printed below. Brown border and underprint with gilt seal. Uncancelled. Printer - Broun-Green, NY. 9 x 12. This company probably had their operations in the Thunder Mountain district located in central Idaho. The district was booming about this time. Fold creases. Very fine. Est. \$25-75

