

2444. Clocks. Three Pocket Watch Chains. One is a 12" gold link chain; another is a 18" link chain; the third is a black ribbon with gold hardware. Various sizes. Est. \$50-100



2445. Clocks. Waltham Watch Case with new silver plate pocket watch. No glass cover or "second" hand. Has label on front "Waltham No. 625". 2 1/4" Diameter. Est. \$50-75



2446. Clocks. Waltham Pocket Watch. Operational and also has extra watch face in replacement case. Near mint, "A.W. Co. Broadway". 2" Diameter. Est. \$50-100

2447. Clocks. Detex Security Clock. Used for security agents to check in specific check points at specific times. Custom leather case with shoulder strap. 6" Diameter. Very Fine. Est. \$50-150

2448. Clocks. Sonia Wall Mounted Clock. Fancy oak frame manufactured by Sonia NY. Key Present. 24"x16"x6". Very Fine. Est. \$200-4000



Lot 2445, 2447 and 2448 from upper left to lower right.

2449. Clocks. West Clock's Baby Ben Deluxe Counter Clock. No glass face plate. c. 1925. 4"x4"x3". Fine. Est. \$20-40



COWBOY & WESTERN

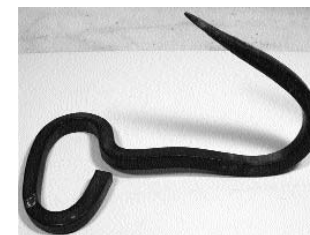


Lots 2450-2452.

2450. Cowboy & Western. Cow Bells. Lot of two, one brass and one steel. Brass one contemporary. Est. \$25-\$50

2451. Cowboy & Western. Spurs. Pair of spurs 3-6 10 point 1.25" diameter spurs cut from flat metal. With hand work leather. Large Rawl. Est. \$75-\$150

2452. Cowboy & Western. Spurs. Set of spurs, 3-6 10 point 1.5" diameter spur. Rounded points. Fancy leather work. Poor. Est. \$75-\$150



2453. Cowboy & Western. Hay hook. Antique. 6" x 8". Est. \$25-\$50



2454. Cowboy & Western. Plow horse Collar, with three metal accoutrements, one primitive. Pre-1900, leather. Approximately 3' x 2'. Very Fine. Est. \$75-\$150



2455. Cowboy & Western. Bits & Bridles. Contemporary bit; antique, pre-1900; Different style, antique. Very Fine Est. \$25-\$75

2456. Cowboy & Western. Rare Barbwire. About 10'. Stubbe plate. Patented 1883. Est. \$100-\$200

2457. Cowboy & Western. Four branding irons. CL, (Bar) YD; (Bar) Y D small; (Bar)D lazy S. c. 1900-202. Est. \$200-\$400



2458. Cowboy & Western. Three Victor Traps. Single handle traps. One 6"(1911), and two 3". All in good condition. Est. \$50-\$100

2459. Cowboy & Western. Ten two handled Victors Traps. Four are 6", three 4" and three 3". Est. \$100-\$200



2460. Cowboy & Western. **Stakawt 1/2 trap.** 4" jaws. C.1910. Est. \$50-\$100

2461. Cowboy & Western. **Easy Set No.4 Trap.** Triumph Trap Co. Spring loads. 8" jaws. Est. \$50-\$100

2462. Cowboy & Western. **Spring Trap.** Gibbs & Son single grip, No.3 spring loaded trap, 1925. 4" jaws. Est. \$50-\$100

2463. Cowboy & Western. **Two traps.** Onita Co. No. 2 & No. 3 jump traps. 4" jaws. c. 1910. Est. \$50-\$100



Lots 2460-2464



2464. Cowboy & Western. **Spring Trap.** Victor spring loaded, No.2 coil Spring. 4". Est. \$25-\$50

2465. Cowboy & Western. **Wood Saws.** Two single buck wood saws, with wood frames. Good Cond. C.1930. Est. \$50-\$150

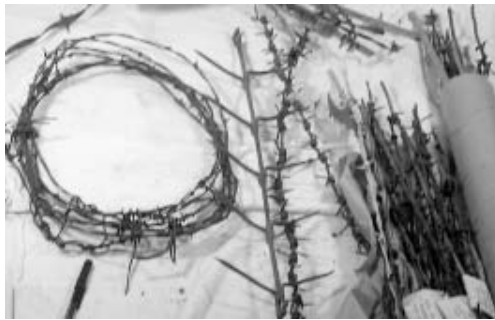


2466. Cowboy & Western. **Bell-shaped horse anchor.** When there were no horse rails available, horsemen would place this approximately 50 pound cast iron anchor in front of the horse and tie the reins to the loop at the top. There is no maker noted, but on the inner lip of the bell, there is a four digit number. This is a neat piece of western history. 9'x7'x7' Excellent. Est. \$50-\$150



2467. Cowboy & Western. **Ornamentation for a coffin from a funeral store.** C. 1890-1910. Coin Silver, Silver Plate, Gilt fancy casted hardware. About 10 Pcs. Est. \$25-50.

2468. Cowboy & Western. **Mounted Barbed Wire Collection.** 1868-1900. Fifteen different barbed wires mounted on wood board, with framed water-color of cowboy walking a fence line. 1.5' x 4'. Est. \$200-400.

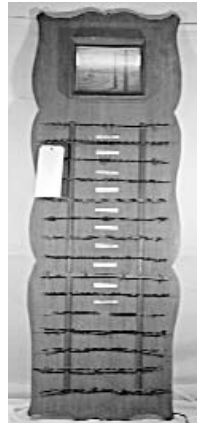


Examples of lots 2469, 2470 and 2473.

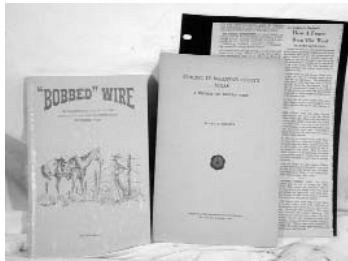
2469. Cowboy & Western. **Antique Barbed Wire Collection.** Two small rolls, perhaps 10-20' each, of oddball barbed wire from the 1800's. One similar to Kelley's Diamond point, other Barder Barb. Est. \$50-100.

2470. Cowboy & Western. **Antique Barbed Wire Collection.** Nine different, 12-18" lengths of rare barbed wire. Includes Brinkerhoff, Kennedy, Hodge, etc. Est. \$100-200.

2471. Cowboy & Western. **Wooden Horse Spacers** for horse team to pull wagon. C.1870-1900. Est. \$50-150.



2472. Cowboy & Western. **Cowboy Saddle-mounted rifle holster.** C.1900-1920. Est. \$100-300.



2473. Cowboy & Western. **Barbed wire collection.** 42 pcs. Mostly different. Includes many rare varieties. Standard 18" length. c. 1850-1950. Est. \$200-400.

2474. Cowboy & Western. **Two barbed wire publications.** *Fencing in McLennan Co., Texas: a History of Barbed Wire* by Conger, 1955. *Bobbed Wire* by Glover, 1966. Texas book is considered one of the more desirable barbed wire publications. Est. \$100-150.



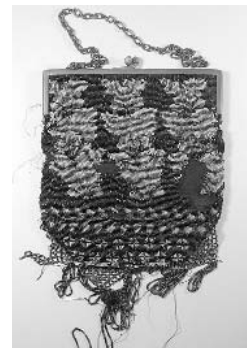
2475. Cowboy & Western. **Set of Historical Square Nails.** Treemont Nail Co. Manufacturers Kit with 20 different Square Nails and their history. "Old Fashioned Cut Nails Since 1819." C.1940. Mint. Est. \$50-100



2476. Cowboy & Western. Fine Beaded Purse. Victorian. Various shades of blue, with black. Beaded fringe at the bottom. 6" lip and depth. Floral beaded patterns. Est. \$100-150.



2477. Cowboy & Western. Framed Confederate Money. 5 different pcs, including 4/6/1863, \$1 note, 4/6/1863 \$10 note with 9/6/3 red overprint 9/2/1861 \$5 note, 2/17/1864 \$10 note; and a 1/1/1863, Alabama 25 cent note. All circulated and in varying condition. Est. \$50-100



2478. Cowboy & Western. Virginia City School Satchels. 2pcs. Blue coated leather, with brown trim. Other is a black leather satchel. C.1900. Est. \$50-75

2479. Cowboy & Western. Antique Bamboo(?) Fishing Pole and two lures. Dates unknown. Est. \$25-50.

2480. Cowboy & Western. Primitive One man plow. 14" diam. Wheel, 6" plow device, 3' wood handles. C.1900. Est. \$50-150.



2481. Cowboy & Western. Primitive Scythe. 24" iron blade, 5' handle. C.1900. Est. \$50-150.



2482. Cowboy & Western. Crude, primitive, tin water can(?), with spout and elevated hole on top. Repainted red. C.1870. Est. \$50-75.



COFFEE

2483. Coffee. Wood Coffee Mill. Single drawer, handle at back. Tongue and groove construction. c. 1875. Est. \$25-\$75



2484. Coffee. Early Coffee Grinder. No. 44 Regal. Wall mounted. The top has of a screw lid. Black painted metal, with wooden handle on the crank. VF, some of the writing on the can is worn. Est. \$75-150

2485. Coffee. Early Arcade Crystal Coffee Grinder. Glass jar atop cast iron body. Gilt lettering. Wooden-handled hand crank. There's a small viewing window through which one could view the ground coffee before dispensing. VF, crack in jar and in window portal. Est. \$100-300

2486. Coffee. Elgin National Coffee Mill. Approximately 5 1/2' tall. Restored to original state, Black cast iron body, with a red central piece, which connects the two wheels. Large urn style basin into which the beans are poured. From Morton's General Store, Garlock, CA. This is a beautiful piece. XF. Est. \$1000-3000



Lot 2484 and 2485, respectively.



Lot 2488, 2487, and 2489. respectively

2487. Coffee. Early coffee can. Simple in design, this coffee bean container ain't fancy, but it does the job. Removable top. Beans still inside! Fine, quite rusted. Est. \$25-50

2488. Coffee. Table Top Coffee Mill. Bell Company 14x18" c, 1870. Model No. 2. Coffee or corn mill. Est. \$200-400

2489. Coffee. Two Blue Granite Wear Stove Top Coffee Pots, c. 1910. Est. \$100-200

2490. Coffee. x-15. Large Granite Wear Stove Top Coffee Pot, c. 1890-1900. Est. \$50-100

