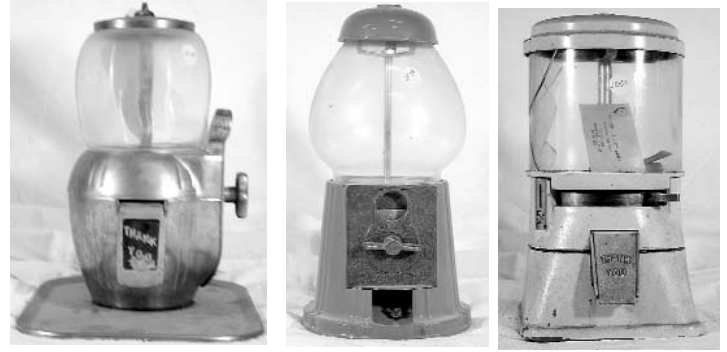


2416. Coin-Op. Buffalo Nickel Toy Bank. Modeled after a stack of Buffalo nickel with the year 1913 (probably the date of the item). 2"x3"x3". c. 1920-40 Extremely fine. Est. \$25-50

2417. Coin-Op. Gumball Machine. Gumball machine attached to tray. Has no manufacturer name. c. 1935. Working condition. Est. \$300-600

2418. Coin-Op. Gumball Machine. Modern gumball machine. Manufactured by Carousel Industries Inc. ILL. Est. \$20-40

2419. Coin-Op. Gumball Machine. Nickel gumball machine. No manufacturer shown. c. 1940-1950. Glass is cracked, yellow body. Est. \$75-150



Lot 2417, 2418 and 2419, respectively

2420. No Lot.

2421. Coin-Op. Color ball trade stimulator. Pay the bartender a quarter, and you'd get 10 balls. If you got certain colors back, the pay went up to \$5 dollars in trade Est. \$50-150

Lot 2422 and 2423

2422. Coin-Op. Pinball Machine. "Ballyhoo". 5 cent denomination no cover glass. Maybe one of the early Bally machines. 8"x14"x36" Est. \$100-300

2423. Coin-Op. Samson Gaming Machine Face Plate. Samson Gaming Machine Face Plate. Part Only 12"x20"x1" Est. \$25-50



\$25-50

CLOCKS

2424. Clocks. Regulator Wall Clock. Regulator rectangular wall clock. Made E. Ingraham Bristol Conn. mahogany frame Roman numerals, in running condition; c. 1880. 38"x18"x5". Est. \$300-600



Lot 2424 and 2426, respectively



Brown, actor. c. 1920. 14"x9"x7". Very Fine. Est. \$150-350

2425. Clocks. General Electric Thermometer & Clock. Brass casing, with clock. Mounted on front is a thermometer with adjustment. C.1920-30. 9"x5"x3". Very Fine. Est. \$25-50

2426. Clocks. Sessions Mantel Clock. Oak and Walnut case. c. 1915-1925. 10"x10"x6". Very Fine. Est. \$100-300

2427. Clocks. Revere Two Chime Clock, by Telecron Mantel Clock. Very fancy, with rounded top. Front is faced with maroon leather, which surrounds the clock's face. Four small carved columns near base. Very nice. The leather facing is a bit worn at its edges, but is in otherwise excellent condition. This clock was given to Greg McMaster's parents by Joe E.



2428. Clocks. Fancy Mantel Clock Top. Bevelled glass encased, with columnar type brass frame. Innards are visible through glass. Fancy scroll-pattern clock face. 16"x9"x6". Very fine. Est. \$300-600

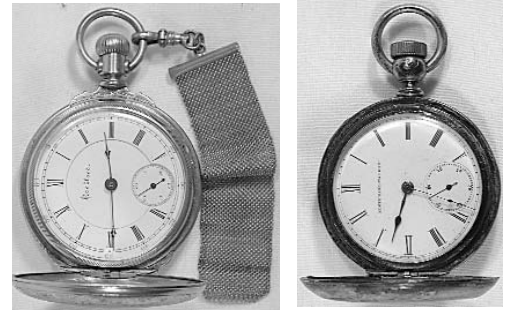
2429. Clocks. Antique Clock. Very ornate oak pattern. Double church-key winding mechanism. Mantle top style. The wood carving is fantastic, resembling leaf design. Circa 1890-1910. 23"x16"x5". Very Fine. Est. \$150-300



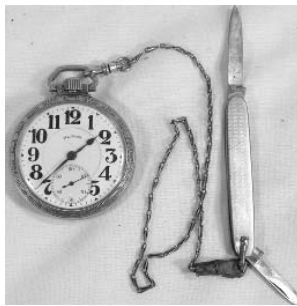
Lot 2428 and 2429, respectively

2430. Clocks. Sliver Newport Pocket Watch. Elgin National Watch Company. Roman numeral time values. c. 1880. 2" Diameter. Very Fine. Est. \$50-150

2431. Clocks. Rockford "Montaux" pocket watch. Gold colored (14kt?) hinged front & back with chain mail attachment. Roman numeral time values. 2 1/4" Diameter. Extremely fine. Est. \$150-350



Lot 2431 and 2430, respectively



2432. Clocks. Elgin "Victory" pocket watch. Glass face plate cracked, screw back rear cover. c. 1900's. 2" Diameter. Est. \$100-200

2433. Clocks. Illinois Watch Co. "Bunn" railroad watch. 10kt. gold body, filled screwback cover and no face cover. Time values are Arabic numbers with a small minute clock inset. Gold plate fancy chain w/small pen knife attached. 2" Diameter. Est. \$100-300

Lot 2432 and 2433, respectively

2434. Clocks. American Waltham Watch Co. Pocket Watch. Thick glass front plate, screwback cover. "Fahy's ore silver" patented 2-19-1884, P.S. Bartlett Waltham, Mass. 2 1/4" Diameter. Est. \$75-150



Lot 2435 and 2436, respectively

2435. Clocks. A.W. Co. Waltham Pocket Watch. Thick glass cover, coin silver body. "Fahy's Monarch coin" and engraved on back is "P.S. Bartlett". 2 1/2" Diameter. Tarnished in some areas. Est. \$75-150



2436. Clocks. American Waltham Watch Co. "Century" pocket watch. Silver w/gold inlaid eagle on reverse side. Very thick glass cover plate. Access to works through front. Patented 4-17-79. Serial Number #2907. 2 1/4" Diameter. Est. \$75-150



2437. Clocks. Elgin National Co. Pocket Watch. 14 kt. gold plate, heavily worn, hinged back & front cover, needs cleaning. Very fine, 18" gold watch chain. c. 1880. 2 1/4" Diameter. Est. \$100-300

2438. Clocks. Victory Pocket Watch by American Waltham Co. 14 kt. gold plate, with fancy scrolled patterns on front & back. Hinged front & back covers. c. 1890. 1 1/2" Diameter. Est. \$50-150

2439. Clocks. Lady Elgin "Montaux; Guaranteed 20 years" pocket watch. Miniature gold lady's pocket watch made for charm bracelet. 7/8" Diameter. Est. \$50-100

2440. Clocks. Four Pocket Watches. All heavily used, damaged, or broken. Brand names include Locust, two from Westclox and Biefield (London)- These watches are good for parts only. 2 1/4" Diameter. Est. \$75-150

2441. Clocks. Elgin National Watch Co Pocket Watch. Gold plated, no face cover, screwback cover, heavily worn. Patented 1879. 2 1/4" Diameter. Fine. Est. \$100-300

2442. Clocks. U.S. Engineer Corps Compass. Brass casing with hinged face cover & brass belt loop. c.1940. 2" Diameter. Fine Est. \$25-50



Lot 2443 and 2442, respectively



2443. Clocks. Nickel Watch Protector Case. Cloth piece within case. 2 1/4" Diameter. Est. \$25-50



2444. Clocks. Three Pocket Watch Chains. One is a 12" gold link chain; another is a 18" link chain; the third is a black ribbon with gold hardware. Various sizes. Est. \$50-100



2445. Clocks. Waltham Watch Case with new silver plate pocket watch. No glass cover or "second" hand. Has label on front "Waltham No. 625". 2 1/4" Diameter. Est. \$50-75



2446. Clocks. Waltham Pocket Watch. Operational and also has extra watch face in replacement case. Near mint, "A.W. Co. Broadway". 2" Diameter. Est. \$50-100

2447. Clocks. Detex Security Clock. Used for security agents to check in specific check points at specific times. Custom leather case with shoulder strap. 6" Diameter. Very Fine. Est. \$50-150

2448. Clocks. Sonia Wall Mounted Clock. Fancy oak frame manufactured by Sonia NY. Key Present. 24"x16"x6". Very Fine. Est. \$200-4000



Lot 2445, 2447 and 2448 from upper left to lower right.

2449. Clocks. West Clock's Baby Ben Deluxe Counter Clock. No glass face plate. c. 1925. 4"x4"x3". Fine. Est. \$20-40



COWBOY & WESTERN



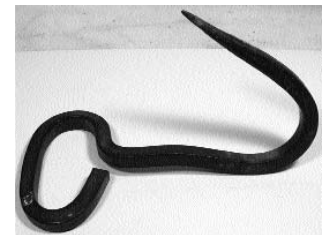
Lots 2450-2452.

2450. Cowboy & Western. Cow Bells. Lot of two, one brass and one steel. Brass one contemporary. Est. \$25-\$50

2451. Cowboy & Western. Spurs. Pair of spurs 3-6 10 point 1.25" diameter spurs cut from flat metal. With hand work leather. Large Rawl. Est. \$75-\$150

2452. Cowboy & Western. Spurs. Set of spurs, 3-6 10 point 1.5" diameter spur. Rounded points. Fancy leather work. Poor. Est. \$75-\$150

2453. Cowboy & Western. Hay hook. Antique. 6" x 8". Est. \$25-\$50



2454. Cowboy & Western. Plow horse Collar, with three metal accoutrements, one primitive. Pre-1900, leather. Approximately 3' x 2'. Very Fine. Est. \$75-\$150



2455. Cowboy & Western. Bits & Bridles. Contemporary bit; antique, pre-1900; Different style, antique. Very Fine Est. \$25-\$75

2456. Cowboy & Western. Rare Barbwire. About 10'. Stubbe plate. Patented 1883. Est. \$100-\$200

2457. Cowboy & Western. Four branding irons. CL, (Bar) YD; (Bar) Y D small; (Bar)D lazy S. c. 1900-202. Est. \$200-\$400



2458. Cowboy & Western. Three Victor Traps. Single handle traps. One 6"(1911), and two 3". All in good condition. Est. \$50-\$100

2459. Cowboy & Western. Ten two handled Victors Traps. Four are 6", three 4" and three 3". Est. \$100-\$200

