

2745. No Lot.

2746. No Lot.



2747. Telephone. **Russell A.C. Signal**. Electrical signal mechanism patented 1911. 10"x5"x5". Est. \$25-50

2748. Telephone. **Telegraph Key, c. 1890**. No maker noted. 3"x5"x2". Est. \$25-75



TOBACCO

2749. Tobacco. **Tobacco plug cutter**. Embossed "Triumph". Est. \$100-300



2750. Tobacco. **Lot four Cigar Tins**. One held Old English Pipe Tobacco, Curve Cut. Quite dented, but features picture of English man on front. Red and gilt paint.; Cinco Handy Humidor tin, by Otto Eisenlohr & Bros. Cute vignette of gentleman and woman flanking an oval picture of an ostrich; Union Cut Plug Cigar tin, with a picture of a bald eagle atop pack of Union Leader brand Cigarettes. Red and gilt; Say-So Havana Cigar Tin. Logo and faux wood printed throughout. All are damaged with rust and denting, but this remains a very neat collection! Est. \$150-400

2751. Tobacco. **J.B. Smoking and Chew tin**. Fancy, ornate design. "Only Genuine... Beware of Imitations." Very nice tin. Est. \$100-200



2752. Tobacco. **Pedro Smoking Tobacco Tin**. Nice design. Yellow paint with black and red writing and scroll-type designs. Lid opens and locks. Est. \$100-300

2753. Tobacco. **Small J.G. Dills Cut Plug cigar tin**. Very nice piece, with a fancy design of a woman lounging. Great Type in masthead. Yellow and black paint. Est. \$50-75



2754. Tobacco. **Small J.G. Dills Cut Plug Cigar Tin**. See other lot for more description. Est. \$50-100



2755. Tobacco. **J.G. Dill's Natural Leaf Cigar Tin**. Fancy banner design, and trade mark at left. Red, white and black paint. Est. \$100-200

2756. Tobacco. **Windsor Casile Tobacco Mixture tin**. It's very difficult to read the originally paper label, due to dirt and grime. Est. \$50-100



2757. Tobacco. **Union Leader Cut Plug Cigar Tin**. Very vibrant gilt design on red paint. Spread-winged bald eagle perched atop a pack of cigarettes. Has lockable lid. Only three sides were kept original. The fourth was repainted, with "Shoe Repair" painted on it. Est. \$100-300

2758. Tobacco. **Old Briar Tobacco Tin**. Nice leathery design paint. Gilt lettering and edges. 5" x 3" x 3". Est. \$100-300



2759. Tobacco. **Leroy Cigars metal advertisement sign, c.1940**. Could be a reproduction, the back appears to be new. Red background with box of Leroy Cigars entering at top. Green and black type. Est. \$25-75

2760. Tobacco. **Pig-Tail Crooks Cigar advertisement piece**. Ad is mounted on poster board, or material of similar gauge. Yellow banner and yellow print on red background. Est. \$50-150



Lot 2754 and 2753, respectively



2761. Tobacco. **Napoleon Cigar advertisement.** Vibrant colors, featuring an illustration of Napoleon at the left. Yellow background with red lettering. Est. \$50-75

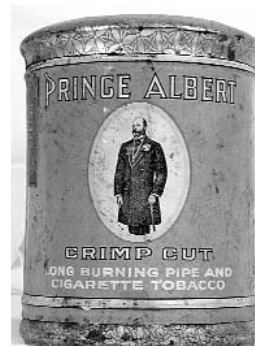


2762. Tobacco. **Penn's Sun-Cured Cigar tin.** "Penn's Spells Quality" with an illustration of a quill tip. Yellow background with red and black lettering. One side bears a testimony of quality. Est. \$50-100

2763. Tobacco. **Pipe and pipe case, c. 1900.** Both pieces were made by A.B.C. of London. The pipe has a wood body. The case is made of leather. Est. \$25-75



2764. Tobacco. **Black Cat Cigarette Tobacco Tin.** Round can, with embossed lid of two Indians in flanking a tobacco plant. The body of the can has a yellow background with a portrait of a "black cat". Parts of the original weight stamps still present. 6" tall with an 8" diameter. Est. \$50-100



2765. Tobacco. **Prince Albert Crimp Cut Cigarette Tobacco.** Nice, ornate design on lid and at bottom. The front of the can features an illustration of Prince Albert. Gilt design and lettering on red background. The back give pledge of quality, "Does not bite the tongue.". Est. \$25-50



2766. Tobacco. **Empire Plug Tobacco Cutter.** Est. \$50-150

2767. Tobacco. **Browns Mule Large Tobacco Cutter.** Est. \$75-150



2768. Tobacco. **Copenhagen Tin Sign.** Paint damaged in places. Est. \$25-75

2769. Tobacco. **Marlboro Advertising Thermometer, c. 1950.** 7" x 14". Est. \$50-100



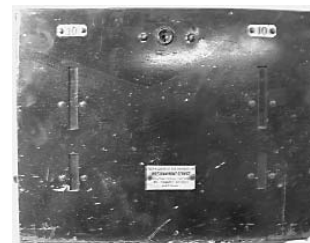
2770. Tobacco. **Group of Tobacco Collectibles,** Old Pro Tin, Prince Albert Tin, Bagleys Store, Gold Shore Store Cut Plug Bag. Two early primitive lighters. Original can of Pelican lighter fluid, cone top can, empty. Est. \$50-100



Lot 2771 and 2769

2771. Tobacco. **Rieiss Folding Pocket Pipe in original box.** c. 1915-25. Est. \$50-100

2772. Tobacco. **Wrexham Tobacco Dist. Coin Operated machine.** Vixon-Bath. Has original key. Est. \$100-300



TOOLS

2773. **Tools.** Riveting tool. Cast Iron unit made by Ginn Wall Co. of S.F. Manufacturer on one side, and Chinese symbols on the other side of the body. Very sturdy piece. Est. \$75-200

2774. **Tools.** **Water Pump, by Dempster of Nebraska.** Appears to be restored. Black painted cast iron, with gilt lettering on sides. This is quite a beefy little fellow. 1 1/2'. Est. \$75-100

2775. **Tools.** **Cobbler's Tool Box.** Wood box with metal tools to clean and repair shoes. C. 1890. 28"x16"x12". Est. \$75-150

