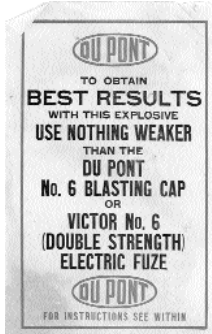


1816. Mining. Eastern States. **Newton MC.** Inc. in 1864. Cert# 36, issued to J.W. Cartwright for 500 shares in 1864. Signed by pres. W.L. Beat and treas. Geo. R. Hastings. No vignette, red border and print with green seal. Brown 25 cent documentary with Geo. Washington's head at left. Dated Boston, Mass. Light stains upper right. Trimmed tight at left. Uncancelled. Some light wrinkles, very fine. Printer – Alfred Mudge & Son, Boston. 5 1/2 x 4. We have extensively searched for this company, without success. It may be for an eastern mine, possibly lead or iron, hence its lack of inclusion in precious metals references. Est \$150-300



1817. Mining. Explosives. **Du Pont de Nemours Powder Co Instructional Pamphlets.** Lot of 9 pcs. Front cover states "To Obtain Best Results with this Explosive Use Nothing Weaker than the Du Pont No. 6 Blasting Cap or Victor No. 6 (Double Strength) Electric Fuze. For Instructions See Within." Inside this pamphlet are two pages outlining the "Instructions and Rules for Transporting, Storing, Handling and Using High Explosives. Manufactured by the E. I. du Pont de Nemours Powder Co, Established 1802, Louviers, Colo, Hercules, Cal., Du Pont, Wash." The instructions go on to explain how to make primers, tie fuses and loading holes. One thing repeated in the warnings are NOT TO USE FROZEN. The reverse cover has the same text as the front cover. Most are torn and dirty as a result of the miners just tossing these aside when they opened a new box of explosives later to be found within abandoned mines. Fine. Est. \$50-100

1818. Mining. **Grey Eagle Consolidated MC.** Inc. in CO. Cert, #434, issued to Theodore Meren for 50 shares in 1880. Signed by pres. Dan'l E. Parks and sec. A.J. Woodside. Vignette below masthead of miners above ground, two at rest, several working in background. Eagle vignette at left. Black border with green safety/underprint. Dated Denver. Printer – Collier & Cleaveland. 11 x 7. Uncancelled. Quite wrinkled. Fine. . Common name. 2 Gray Eagles in Colorado, both producing. One in Summit Co, the other in San Juan. (Burchard 1881). By 1883 there were even more. Wrinkled, probably by the owner when he found out the stock was worthless. Est. \$150-300



1819. Mining. **Hope Lorraine MC.** Cert.#49. Incorporated in Delaware in 1917. Issued to W.J. Wollman for 100 shares in 1918. Signed by president and secretary M. Pisik. Vignette of mill at river's edge, flanked by two smaller vignettes of underground mining scenes. Black border, gilt seal. Printed by J. Meyers. 5 1/2" x 10". Xf, folds. We could not find reference to this company in our library, but we think it is probably Western. Est. \$20-40

1820. Mining. **Idaho Cons. G&SMC.** Inc. in NY. Cert #910, issued to John O Hay, Jr., Treasurer for 100 shares in 1882. Signed by vp Edward G. Schegle (?) and sec. J.O Hay, Jr. Underground mining vignette. Green border and underprint. Dated New York. Printer – Kendall Bank Note Co., NY. 11 x 8. Uncancelled. Extremely fine. To illustrate how difficult it is to look up old mining companies, there were at least a dozen different Idaho mines in the west from 1882-4, with at least one in nearly each of the western mining states. We found numerous Idaho Gold & Silver MC's, but none incorporated in New York with these officers. We found no specific reference to Idaho Consolidated. Thus we cannot even guess which state it was located without going to the New York Secretary of State for the corporation records. There were two rich Idaho mines in Idaho, one in Custer county and one in Alturas county, according to Burchard in 1882. The Idaho in Grass Valley, California was a major mine. Est. \$150-300



1821. Mining. **Joseph Dixon Crucible Co.** Lot of 25 certificates. Inc. in NJ. 1868. All issued and cancelled. Vignette at top of a man's head, presumably Joseph Dixon. Blue border with black print. Glue stains at left on many. Very fine. 12 x 8. Est. \$50-75

1822. Mining. **Kitchner GMC.** Inc. in SD, 1902. Cert.#A1033, issued to Andrew Hally for 100 shares in 1909. Signed by pres. Daniel B. Helm and sec. Geo. J. Wallan. Vignette at top of mill site at the edge of a river with mountains in background. Orange border, black print,



embossed seal. No printer noted. 10 1/4 x 7 1/4. Uncancelled. XF. Kitchener, formerly Berlin, is an industrial city of the Waterloo municipal region in SE Ontario, Canada. Mining is not listed as an activity in this area, so it is difficult to make the jump to this Kitchener having anything to do with the Canadian Kitchener. (Ref: *Webster's New Geographical Dictionary*, 1984, p616) Est. \$25-50



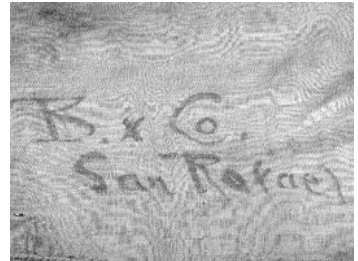
1823. Mining. **Mining Fair, 1898, Souvenir Sterling Spoon.** 4.5" long. Mining Fair, 1898, is embossed in bowl. Ornate design embossed on stem. We could not determine which fair this might have been. Very fine. Est. \$25-75

1824. Mining. Mining Stock Certificate Collection. 1918-1959. Lot of 11 pcs. Chromalloy Corp Specimen (1), Gila Copper Sulphide Co (1), Dama Gold Mines LTD (1), King of Pine Creek Mining Co (2), Concor-Chibougamau Mines LTD (1), Rae Consolidated Gold Dredging Co (1), Lehigh Coal & Navigation Co (1), American Chrome Co (3). Very fine. Est. \$100-200



1825. Mining. Mutual Mining & Leasing Co. Inc. in AZ. Cert #1287, issued to S.Dexter Nutting for 525 shares in 1914. Signed by pres. C.F. Hall and sec. F.G. Stam. Vignette at top of mill. Two small vignettes at bottom left and right of miners working underground. Green border and safety print. Printer – Goes. 12 x 9. Uncancelled. Very fine. Unable to find reference to this company in the Mines Handbooks or Garbani, etc. Est. \$25-50

1826. Mining. Ore Bag, light burlap, large – probably a sugar or flour sack originally stenciled in hand with “B. x Co./San Rafael”. We were unable to confirm if this bag is from a San Rafael merchant or refers to a mine name. Probably used as on ore bag underground. Found in White Pine County, Nevada. 19 x 33”, stains throughout. Circa 1915. Est. \$50-100



1827. Mining. Phoenix MC. Inc. in MO. Cert #19, issued to Jas. A. Jackson for 10 shares in 1875. Signed by pres. Paris S. Pfontz and sec. Alex Davis. Vignette at top of men working underground filling ore car. At left, a small vignette of three robed women floating over a valley, one of which is holding a banner with the word “peace” on it. Revenue stamp in silver foil underprint. Black border and print. Printer – Western B.N. & Eng. Co., St. Louis. 10 x 8. Left edge trimmed unevenly, and partially into border. Uncancelled. Very fine. Very common mine name. Unable to specifically identify. Est. \$150-300

1828. Mining. Red Cloud GM&MC. Inc. in ME, 1892. 8 Per Cent Bond, Cert.#122, 1892. Signed by pres. Frederick E. French and treas. L.A. Bigelow. Bald eagle vignette. Green border and underprint, gold seal, green and red underprint. No printer noted. 10 x 16. Stains at lower left, red wax at lower left as well. Folds. Very fine. Attractive certificate. Unable to find reference to this company in our library. Est. \$100-200



Partial



1829. Mining. Standard Amalgamated Exploration Corporation. Inc. in NV, 1909. First Mortgage Six Percent Gold Bond, Cert.#781, 1913. Signed by pres. Alexander Cluble and treas. George Whiteford. No vignette, brown border and safety print with gold seal. One coupon attached at left. Printer – John A. Lowell Bank Note Co., Boston. 7 1/2 x 11 1/2. Right edge where coupons removed a bit rough, two small tears to left edge. Unable to find reference to this company in our library. Est. \$25-50

1830. Mining. Sunburst MC. Inc. in AZ, 1906. Cert #2325, issued to Annie St. Thomas for 200 shares in 1907. Signed by pres. S.H. Watts and sec. E.T. McGaith. Underground mining scene at top of certificate, two small vignettes of miners incorporated into border and small vignette in gilt underprint at bottom of robed woman holding scales. Gilt border, seal and safety print. Printer – Goes. 11 x 8. Two folds. Crease at upper right corner. Uncancelled. XF. Unable to find reference to this company in our library. These certificates are usually western. Rare. Not listed in the Polk directory as having an office in Nevada. Not in Garbani. Est. \$25-50



1831. Mining. Trust MC. Inc. in WA and B.C., 1897. Cert #76, issued to R.N. McLiam for 208 shares in 1897. Signed by pres. D. Holzman and sec. A.M. Phillips. Dated Spokane, Wash., registered in British Columbia. Vignette at top left of robed woman holding flag and shield with a bald eagle at her side. Black border, green safety print, gold seal and gold lettering. Printer – not noted. Stub attached at left. Cancelled. 11 x 8. Very fine. Not listed in 1898 *Int'l Mines Director* or *Copper Hdbk*, 1905. Est. \$25-50



1832. Mining. Vi King GMC. Inc. in AZ, 1906. Cert #98, issued to E.H. Rust for 5000 shares in 1908. Signed by pres. W.M. Flemming and sec. Charles E. Ford. Underground mining scene at top left, small vignette in gilt underprint at bottom of river winding through mountains. Gilt seal, border and safety print. Printer – John Plhemus Printing Co., NY. 11 x 8. Uncancelled. XF. Unable to find this company in our library. Great name. Est. \$25-50



PHOTOGRAPHS AND POST CARDS

1833. Photograph. **Family Photo Group.** Five are featured from the Benner family of Gettysburg, PA, including three of women (one child), and two of the family farm. The Benner home was taken over after the first cannon crack in the Battle of Gettysburg, 1863. The last is a photo of Sadie Orchard of New Mexico. With her husband, Sadie operated a stage line, often driving the stage by herself. Rightfully, much has been written about this pioneering lady, 1886. All of the photos have damage problems, the Orchard one the worst. Est. \$300-500.



1834. Photograph. Outlaw. **Ed Stokes, CDV.** Stokes, 1841-1901 was the murderer of Jim Fisk. Fisk was killed over Stokes' jealousy over a woman, Josey Mansfield. Jim Fisk (1834-1872) was a capitalist. He had amassed a fortune by the Civil War, only to lose it right afterwards. By 1866 he was back in the cash, with support of Daniel Drew, founding the brokerage firm of Fisk & Belden. His rise after that was meteoric. He thwarted Vanderbilt's efforts to take over the Erie Railroad, and with partners Drew and Jay Gould made millions. He and Gould became "public enemies" when they openly manipulated the stock of several important American companies, and the gold market as well. He bought an opera house, began producing French and other operas. His favorite actress and would-be girlfriend was Josie Mansfield, who worked in his theatre. Fisk was married at the time and was reportedly quite a skirt chaser. Edward Stokes shot Fisk at the Grand Central Hotel in Boston on Jan. 6, 1872 in a quarrel over business and Josie. The Dictionary of American Biography did not say what happened to Stokes. Est. \$50-150

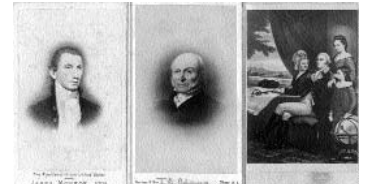
1835. Photograph. **Revenue Stamped Photographs, 1860's.** Lot of 5 pcs. **Unique.** Portrait photos on 2 x 4 cards. The adhesive revenue stamps are affixed on CDV's. Three of them are precancelled, one is tied. Very fine. Est. \$50-100



1836. Photograph. Stereocard. **African American Stereocards by B. L. Singley, Meadville, PA, 1902.** Lot of 2 pcs. a) No. 12325 "Trouble behind" with lady and two children, one over her knee getting a spanking b) #12324 "Trouble ahead" mother making bread while one child sleeps in wood wheelbarrow and the other draws with chalk on the wall "Mammy" Generally fine plus. Est. \$50-100



1837. Photograph. **Washington Family, J.Q. Adams, and James Monroe, Printed portrait collection cards.** Two are bust illustrations, the third of the entire Washington family. 3 3/4" x 2". VF. Est. \$200-400.



1838. Photograph. Western. **Machine Shop photo, c1880** Black and white photo of three people standing in the doorway of a machine shop, (one woman, two men). Portable wood saw and water pump in front. Unknown location. Matted on gray matting. 7" x 9". Fine-very fine. Est. \$50-150

1839. Postcard. **Women's Suffrage postcards.** Two feature an older woman in Uncle Sam garb, "Uncle Sam, Suffragee". The other two are of a police woman and a woman dressed as a man feeding a child, "Suffragette Madonna". All are wonderful. Est. \$75-150.



RAILROAD



1840. Railroad. **Central Pacific Railroad Lock.** The lock is in excellent condition. No key. C. P. R. R. Co. stamped on reverse side. Key has sliding cover. Chain missing. Extremely rare. Est. \$300-500

1841. Railroad. Eastern States. **Chicago & South Western Rwy Co.** Cert.#1161. Unissued. Very handsome certificate with a central vignette of a steam train. There are two smaller vignettes at the bottom corners of state seals (Iowa/Missouri?) Green border with orange imprinted revenue in underprint. Cancelled at signature lines. 7" x 10". Xf. We could not find reference to this company in our library. Not listed in Moody's. Est. \$25-50

