

1698. Lawrence. **Branch Mint M&MC.** Incorporated in South Dakota, issued Philadelphia, 1903. \$500 first mortgage gold bond. 10 x 14. Printed in blue ink. Uncancelled, though no coupons remain. Underground mining vignette in blue at top center. Signed by J. D. Hardin as president and E. M. Taylor as secretary. Extremely fine. The mine is in the Deadwood area in Bear Butte Canyon. Other nearby mines include the Red Cloud, Richmond-Sitting Bull and Florence. The ore trends northeast and dips steeply to the north. Silver was the chief product, carried in the galena, but gold occurs as a byproduct, chiefly from the pyrite. Horn silver was reported. It is unknown if J. Hardin was one of the sons of John Wesley Hardin, famous western outlaw. Hardin was the mine manager and/or owner of at least five different mining companies at the same time. Four of them bore his name. Most were in Two Bit, a mining camp in Lawrence County. Many of the Dakota mines had names playing off the gold coin theme, such as Branch Mint (here), Gold Coin, Gold Dollar, Golden Harvest, Gold Dust, Legal Tender, and so on. Very attractive. (Ref: Poole, Connolly & O'Harra, Allsman) Est. \$35-50

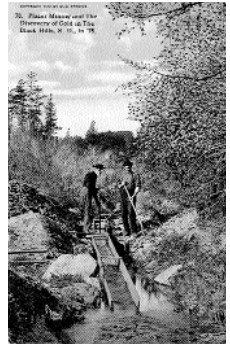


Partial



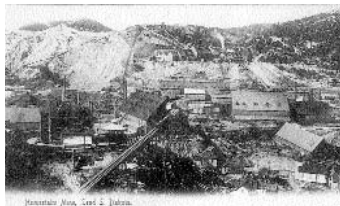
1699. Lawrence. Deadwood. **Two Deadwood postcards.** 2 post card views of this gold mining camp that today is a gaming area. One shows the Deadbroke Mining Co. site, the other is of a downtown scene of Deadwood. Circa 1908-1930. Est \$20-40

1700. Lawrence. Lead. **Circa 1908 Postcards of Lead, SD or mining activities there.** Lot of 4: 1.) colorized, scenes of the town with mill in background; 2.) colorized, placer mining; 3.) colorized, tier of railroads; 4.) b&w, Ellison Hoist. F-VF. Est \$35-75



1701. Lawrence. Lead. **Double Standard Mining Co.** Incorporated in Dakota, 1887. Issued to M. Chapman for 5110 shares, cert #137, in 1888. Signed by G. G. Bennett president and H. E. May secretary. No vignette. Pink border with blue and pink print. Cancelled by rubber stamp of same across certificate. Printer not noted. 5 x 9. Extremely fine. Est. \$50-100

1702. Lawrence. Lead. **Homestake Mine, five post card views of underground operations.** All by W.B. Perkins. All Flash Light photographs of underground workings: 1.) men operating drill; 2.) train loading from chute; 3.) pumping machinery; 4.) old way of drilling and new; 5.) Star station and motor. Fine -vf. Circa 1908. Est \$50-75



1703. Lawrence. Lead. **Homestake Mine, lot of 9 post card views, c1907-1920** of mining activity at the Homestake mine. Two are underground views, 2 mill scenes, and the rest are various shots of surface workings. F-vf. Est \$75-150

1704. Lawrence. Lead. **Hose Company No 1, Lead, South Dakota, Exempt Membership Certificate, 1903.** This certificate was issued to Charles N. Varney in 1903 commemorating his 7th year of service in the Hose Company. This honor comes with the special privilege of exemption from serving in the military or jury duty except in time of rebellion, insurrection or invasion. Vignette at top center of two fire hydrants with hose attached and the words "Ever Ready". Vignette at top left of an old style hydrant. Vignette at bottom center of a fireman blowing a bugle. Gilt seal with blue ribbon at lower left. 16 x 20. No fold creases. Staining along upper left edge of what appears to be glue marks. Extremely fine. Est. \$100-200



leg of exemption from serving in the military or jury duty except in time of rebellion, insurrection or invasion. Vignette at top center of two fire hydrants with hose attached and the words "Ever Ready". Vignette at top left of an old style hydrant. Vignette at bottom center of a fireman blowing a bugle. Gilt seal with blue ribbon at lower left. 16 x 20. No fold creases. Staining along upper left edge of what appears to be glue marks. Extremely fine. Est. \$100-200



1705. Lawrence. Lead. **Real photo card of the workings of the Homestake.** Circa 1920, xf. Good clarity. Est \$25-50

1706. Lawrence. Lead. **Real photo post card of underground miners at Lead, possibly at the Homestake mine, circa 1920.** Vf. Est \$25-50



1707. Lawrence. Lead. **Views of the Homestake mine, lot of 13 postcards.** Wide variety of postcard dates, c 1907-1930. All but one are scenes of the associated buildings. One shot of twin drifts, dated 1912. All vf. Est \$75-150

1708. Lawrence. Lead City. **Oro Hondo MC.** Inc. in SD, 1902. Cert #684, issued to G.H. Rebenold for 50 shares in 1902. Signed by pres. James B. Orman and sec. Geo. D. Begole. Spread-winged bald eagle vignette at top left with "Oro Hondo" at top of it. Fancy brown border, black print and gilt seal and safety print. "Mines at Lead City, South Dakota" printed on certificate. Dated Denver. Printer – C.F. Hoeckel, Denver. 12 x 8 1/2. Folds. Uncancelled. XF. Located in the same district as the famous Homestake mine. Est. \$50-100



1709. Lawrence. Ruby Basin. **Ruby Bell G&SMC.** Incorporated in Dakota. Issued to D. La Chapelle for 500 shares, cert #292, in 1888. Signed by **Seth Bullock** president and secretary. Vignette of a miner set in light blue print in underprint. Brown and blue border with blue underprint. Cancelled by red pen of same. Printer- Times Steam Printing House, Deadwood. *Place of Business, Deadwood, Dak.* printed on certificate. *Location of Mines: Ruby Basin, Dakota* printed on certificate. **Seth Bullock** (1847-1919) was first sheriff of Deadwood, having been appointed by the governor. When he ceased being sheriff in 1878, he became involved in mining ventures. In 1884, when President Roosevelt visited the Dakotas, Bullock established a life-long friendship with him (Thrapp, 1988). Extremely fine. \$200-400



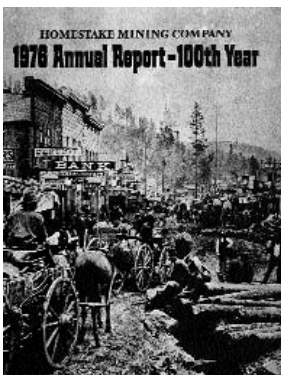
Lots 919 and 919.5 same style

1710. Lawrence. Ruby Basin. **Ruby Bell G&SMC.** Incorporated in Dakota. Issued to John Gray for 2500 shares, cert #189, in 1888. Signed by **Seth Bullock** president and M. O. Shields secretary. Vignette in blue underprint of a miner with a pickaxe. Blue and brown border with blue underprint.

Location of mines: Ruby Basin, Dakota. Place of Business, Deadwood, Dakota. Cancelled by red pen of same

written over signatures. **Printer - Times Steam Printing House, Deadwood.** 6 x 9. Trimmed tight at left edge. Fold creases. Very fine. Est. \$200-400

1711. Lawrence. Two Bit. **Hercules Gold Mining Co.** Cert.#1192. Incorporated in South Dakota in 1897. Issued to J. A. Pritchett for 400 shares in 1898. Signed by president John Walker and secretary W. B. Jackson. Vignette of underground mining scene at left. Six small vignettes throughout black border. Gilt seal. Printer may be under two 4 cent document stamps. 8" x 10". Xf. Hercules MC listed in Poole, 1898, in Two Bit, Lawrence County, South Dakota. This company employed 12 men and produced gold. (Ref; Poole, 1898, p736.) Est. \$25-75



1712. Lawrence. Whitehead. **Homestake Mining Co Annual Report, 1976.** This special edition marking the 100th year of operation has a gold front cover with a picture of Deadwood in 1876. There several photographs of the early days of the Homestake Mine. Commemorative and collectable. Extremely fine. Est. \$25-75

1713. Lawrence. Whitewood. **Homestake MC.** Second issue style certificate. Cert.# 2661. Incorporated in California in 1877. Issued W. Brenton Welling, Trustee for 15 shares in 1881. Cancelled by rubber stamp marks. Signed by president J.B. Haggin. Vignette of two Indians on hill, overlooking civilization. Black border. Printed by the American Bank Note Co. In 1877, George Hearst, along with J.B. Haggin and Lloyd Tevis (President of



Lots 922 and 923 similar style

Wells Fargo & Co.) bought a group of mines at Lead, SD, which became the Homestake Mine. The Hearst group rapidly built the Homestake empire by buying claims including and surrounding the Manuel Mining Claim. For more a more detailed history of the Homestake, see the Alexandra Tilson Filer, Auction III catalog. 7" x 10 1/2". Vf. Est. \$75-150

1714. Lawrence. Whitewood. **Homestake Mining Co.** Third issue. Cert.#4513. Incorporated in California in 1877. Issued to Henry Dayton, Administrator for 10 shares in 1885. Cancelled by rubber stamp marks. Signed by **president J. B. Haggin.** Vignette of two Indians on hill, overlooking civilization. Black border and blue and black underprint. Printed by the American Bank Note Co. In 1877, George Hearst, along with J.B. Haggin and Lloyd Tevis (President of Wells Fargo & Co.) bought a group of mines at Lead, SD, which became the Homestake Mine. The Hearst group rapidly built the Homestake empire by buying claims including and surrounding the Manuel Mining Claim. For a more detailed history of the Homestake, see the Alexandra Tilson Filer, Auction III catalog. 7" x 10 1/2". Vf. Est. \$75-150.

MINNEHAHA

1715. Minnehaha. Sioux Falls & Onio. **Covers and Letters Collection, 1911-1930.** Lot of 73 pcs. All are addressed to Della Green in either Sioux Falls, SD or Onio, ND. Fine to Very fine. Est. \$200-400



OACAMA

1716. Oacoma. **General Manganese Corp.** Cert.#3495. Incorporated in Delaware in 1928. Issued to Frederick W. Franchere for 20 shares in 1931. Signed by Leite and secretary Miller. Vignette of spread-winged bald eagle atop globe. Brown border. Printed by Goes. 8 1/4" x 10 3/4". Xf. Reports on the district indicated a manganiferous content of 25 to 40 lb per cu. Yd. Of shale at February 1930 prices of 60¢ to 90¢. Because of the cost of chemical recovery of the manganese, it was not certain as to the profit at prevailing prices of manganese. (Ref: Rand Sturgis, 1924, pp.1770-71). Est. \$25-50



PENNINGTON



1717. Pennington(?). Black Hills. **Cheyenne Consolidated Mining Co.** Incorporated in New York, 1880. Issued to F. V. Welling for 100 shares, cert #294, in 1881. Signed by G. M. Jetten president and R. M. Wright secretary. Vignette of two men operating a hand crank hoist over a shaft. Black border. Uncancelled. Printer - John S. Hudin, NY. 7 x 11. Two pin holes near left edge. Very fine. Est. \$100-200

1718. Pennington. Keystone. **Tycoon MC of Keystone, South Dakota.** Cert.#526. Incorporated in South Dakota. Issued to Miss Lucia Holuces for 325 shares in 1902. Signed by president E.J. Bealer. Vignette of Abraham Lincoln in masthead. Green border and underprint. This company was so obscure that it is not listed in any of our classic references. The Keystone district is on Battle Creek, 23 miles southwest of Rapid City. In more modern times it has been the site of fantastic mineral collecting in the pegmatites. The district was discovered in 1875, around the time of the Homestake. Gold and tin were mined there through the 1880's, however, the Tycoon was most active around the turn of the century. In 1902, Sanford stated "The Tycoon mine is rapidly being developed under wise management." It had a ten stamp mill that was "soon to be greatly enlarged." The mine may have been purchased by the Homestake. (Ref: Sanford, Connolly & O'Harra). Xf, folds. Est. \$250-350.

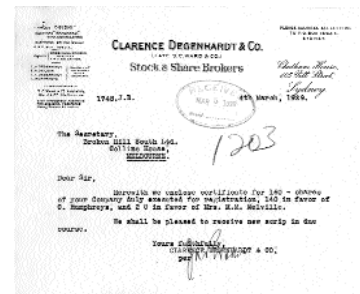


FLORIDA

1719. **Florida Souvenir Pieces.** Lot of 10. 4 Fold-out souvenir postcards from Florida (3-Miami, 1-St. Augustine); 5 postcards from St. Augustine, and Daytona; Florida Tourist Book. All are relatively fine. Tourist book has large rip in cover, fold-outs are very nice. Est. \$50-100

FOREIGN

1720. Australia. Melbourne. **Broken Hill South LTD Document Archive, 200+ pages, 1904-1949.** Most of these documents are from the 1920's and deal with stock transfers and general mining business with other related items. Too many papers to list. Fine to very fine. Est. \$75-200



1721. Brazil. **Brazilian Diamond, Gold & Developing Co. of the US.** Cert.#1253. Incorporated in South Dakota in 1903. Signed by president Nicoloy A. Greostad and secretary O.E. Ray. Vignette of spread-winged bald eagle atop globe. Black border. Printed by Goes. Vf, some foxing along bottom edge, folds. Dated Chicago, IL. 9" x 11 1/4". We could not find reference to this company in our library, but most likely this company exploited diamond mines in Brazil. Est. \$25-75



CANADA

1722. British Columbia. **British Columbia Mining Stock Collection, 1910-1941.** Lot of 6 pcs. All are issued and uncancelled. Quesnelle Hydraulic Gold Mining Co, issued 1910 with a vignette of two nozzles washing a hillside, green border and underprint. Quesnelle Hydraulic Co, 1911 Bond, green border and safety print, no vignette. Caribou Cobalt Mines Co, issued 1913, vignette at bottom center of a caribou head, green border. Nechako River Mines, Inc, issued 1918, no vignette, green border and seal with blue reverse, two identical certificates, both have adhesive revenue stamps. Keewatin Exploration Ltd, issued 1941, no vignette, orange border and safety print. Very fine. Est. \$75-150

